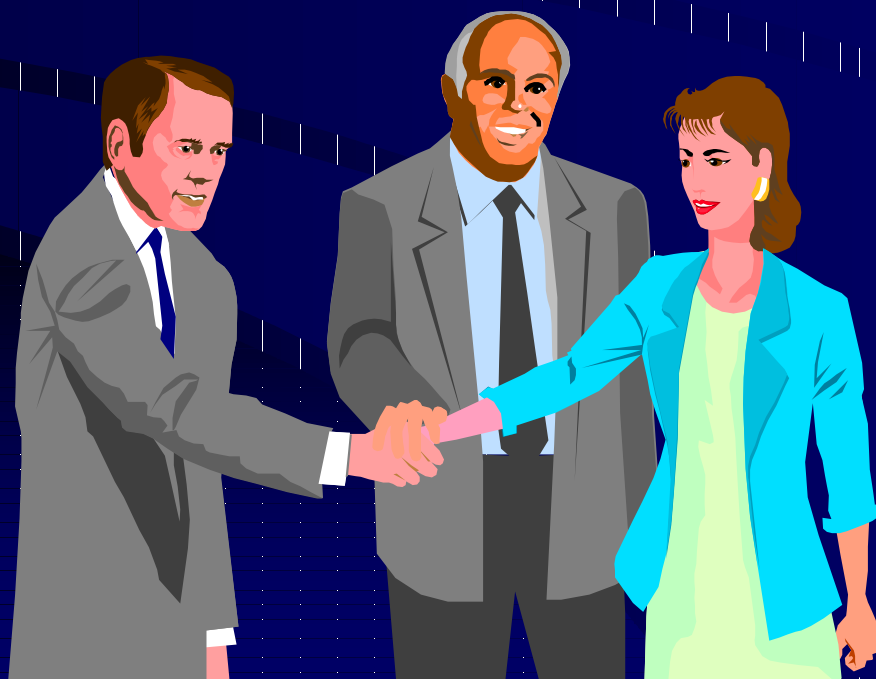


脊柱MRI断面解剖



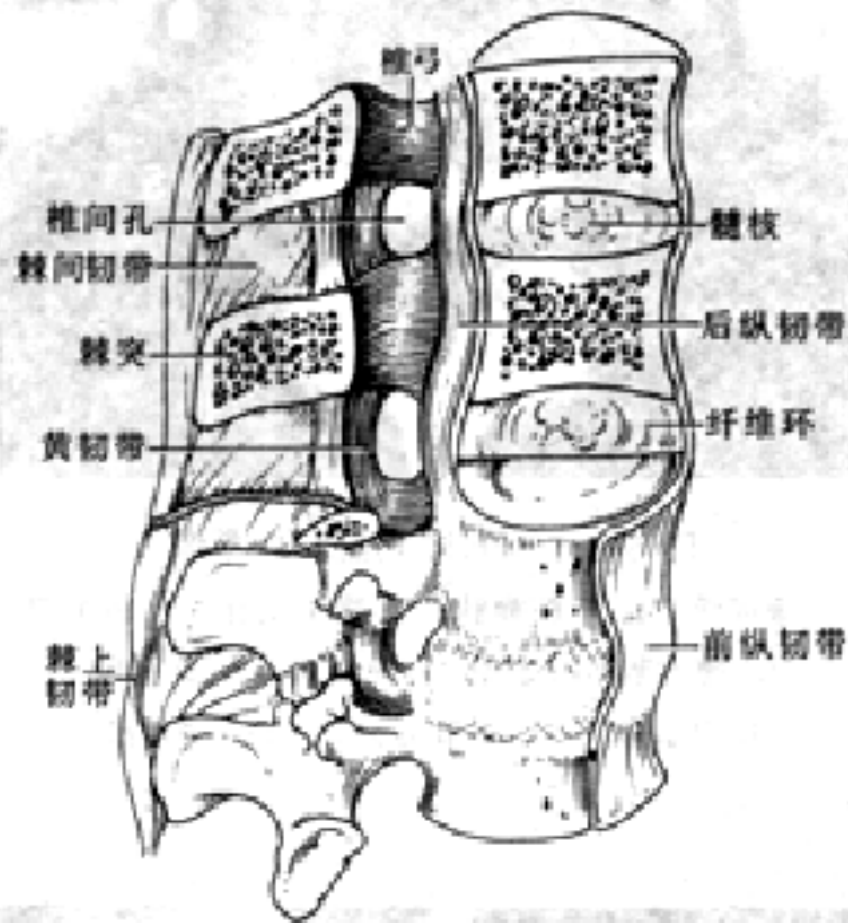


图 6-4 椎骨间的连结

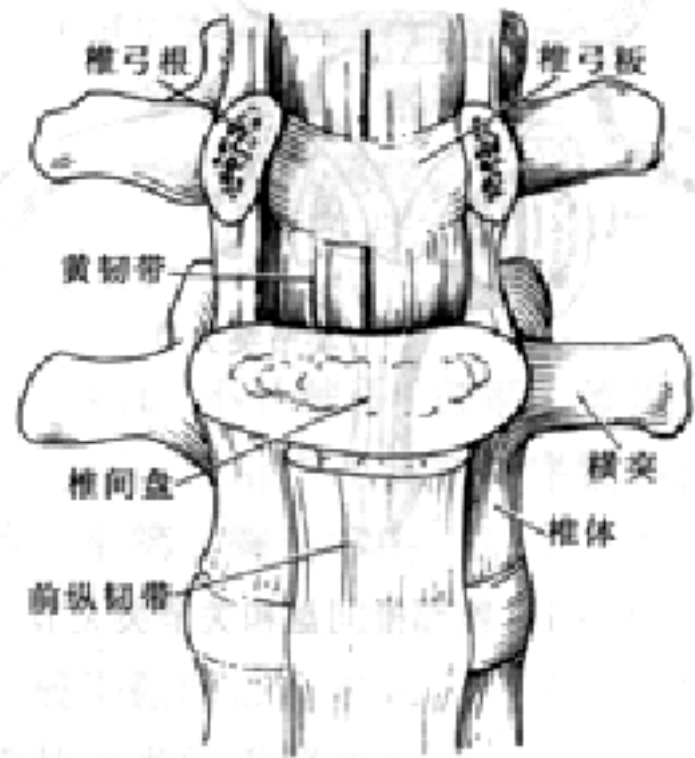


图 6-5 椎弓间连结

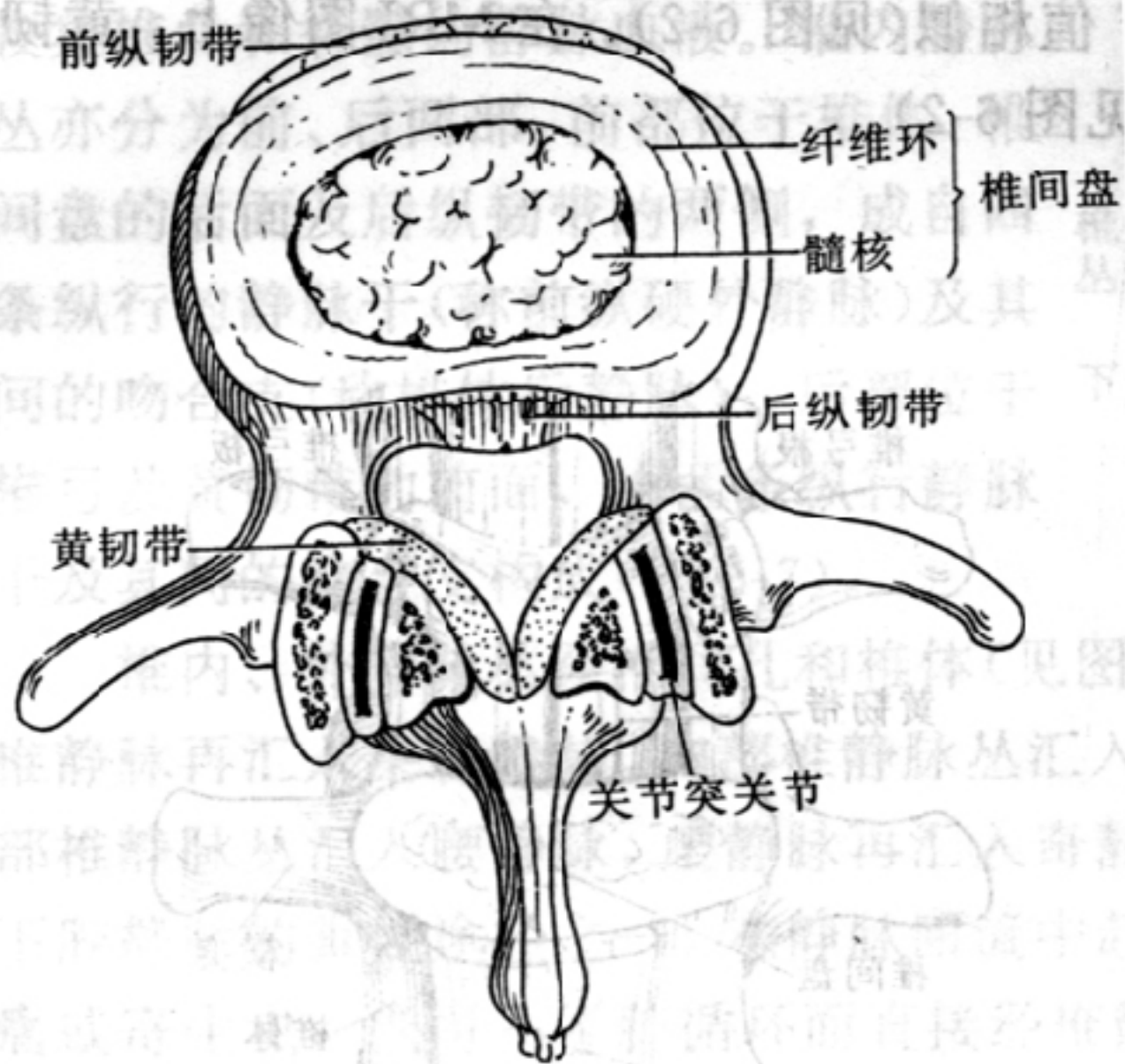
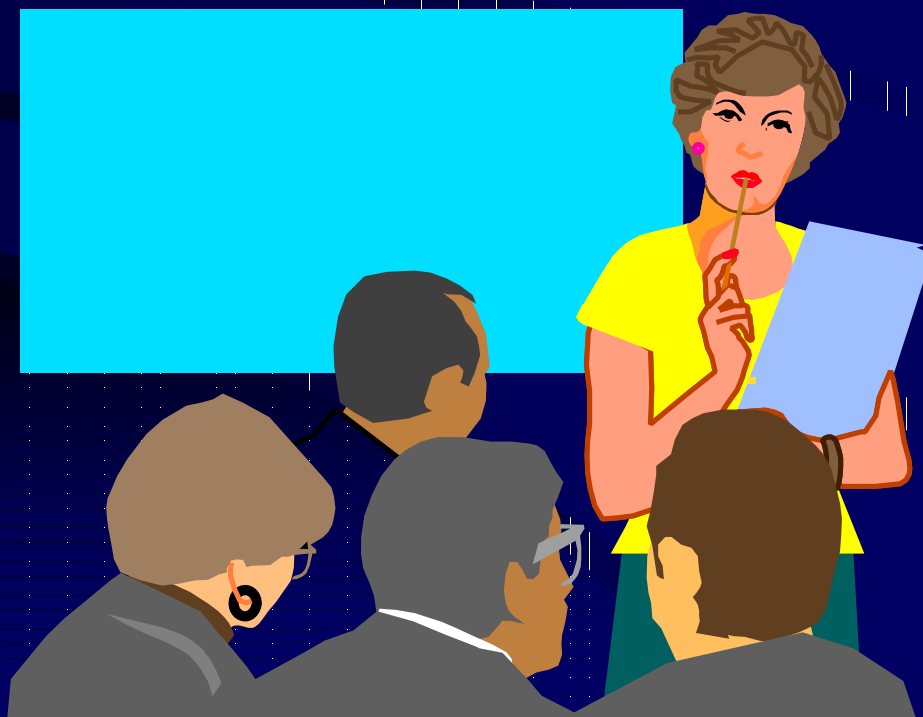


图 6-1 腰部椎间盘和关节突关节

颈部MRI矢状断面解剖



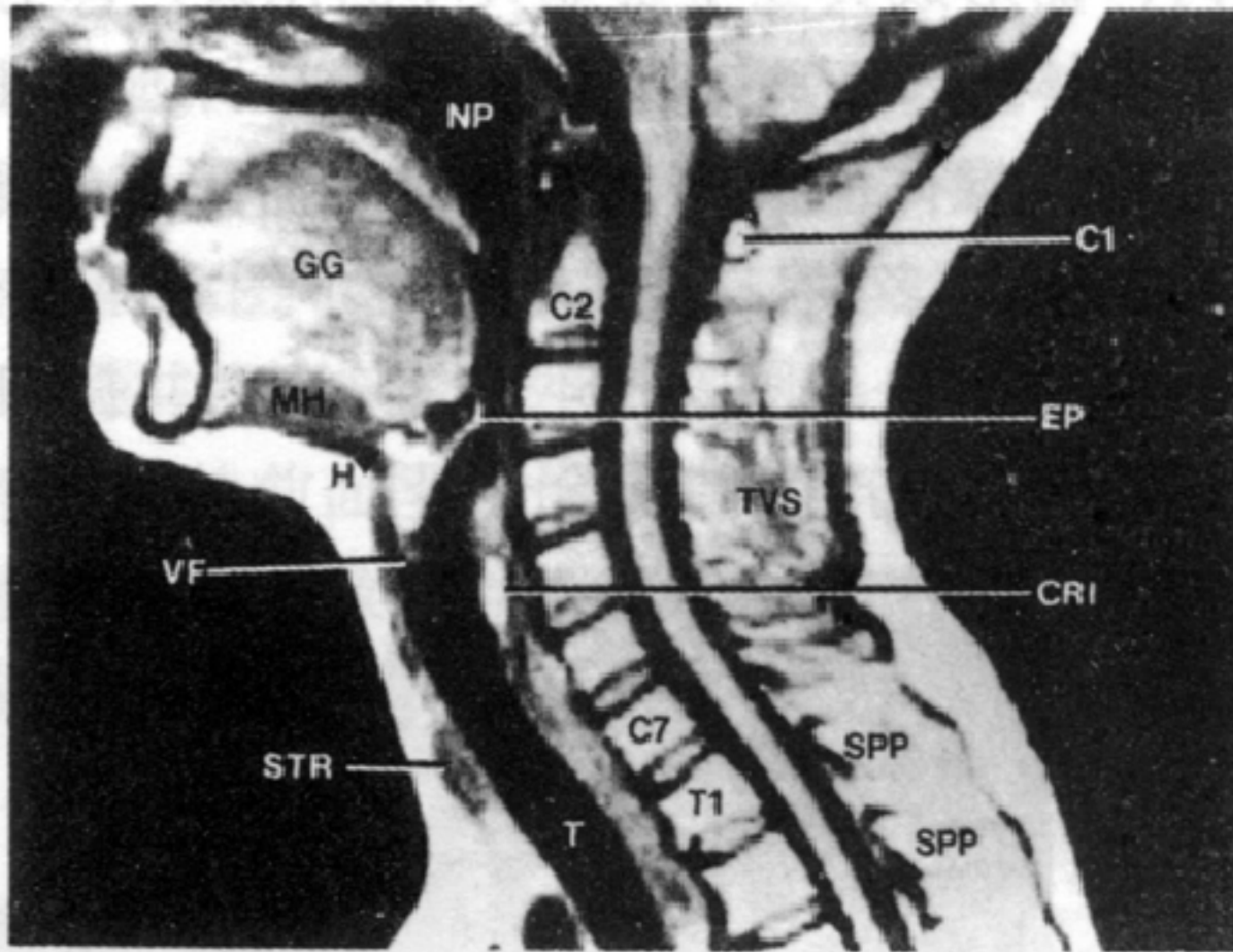


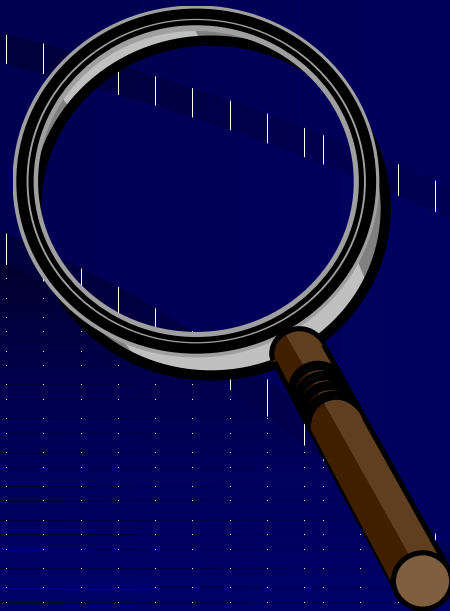
图 7—1 颈椎矢状面磁共振扫描像

(SE1000 / 28)

C1~7、第 1~7 颈椎

1 颈椎椎间孔断面:

- 颈椎椎体外侧部、颈椎椎间孔内脂肪和脊神经、颈椎椎间盘



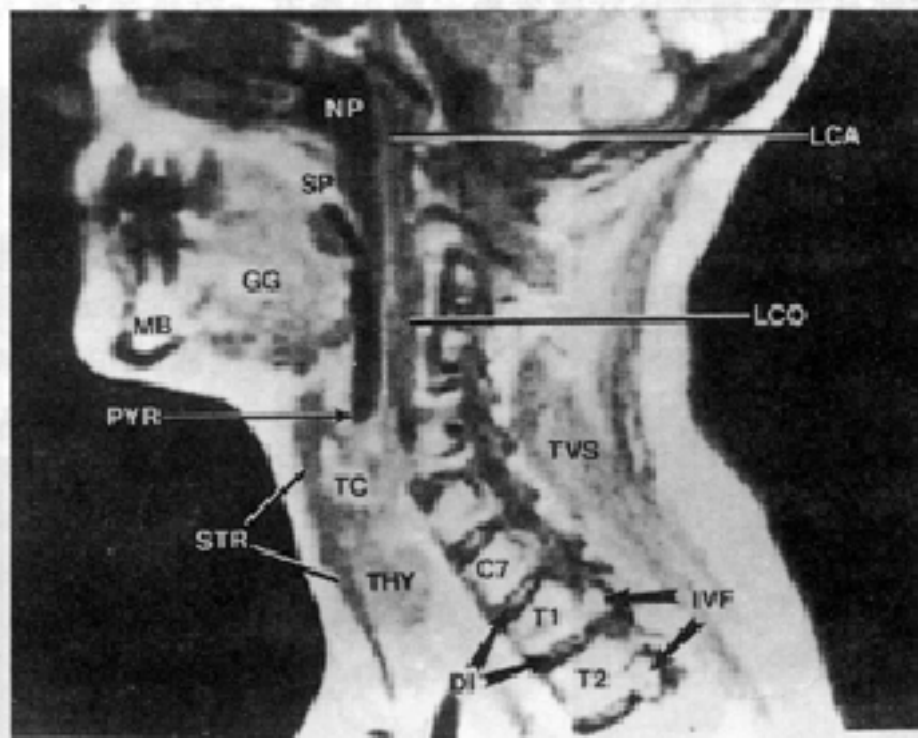
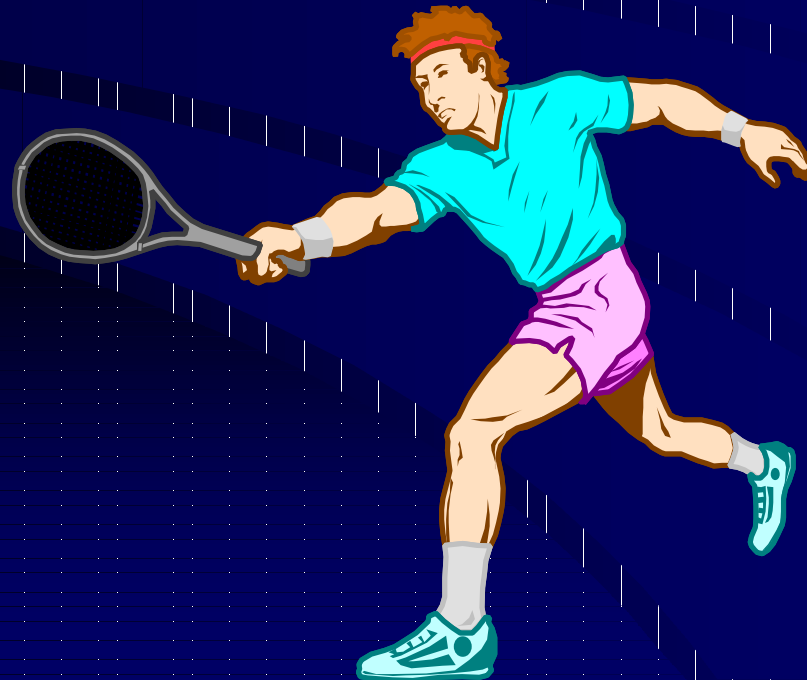


图 3—22 颈部矢状面磁共振扫描像 (SE1000/28)

NP、鼻咽部 LCA、头长肌
LCO、颈长肌 SP、软腭 GG、颏舌肌 MB、下颌体 PYR、梨状隐窝 STR、胸骨舌骨肌 TC、甲状软骨 THY、甲状腺 TVS、横突棘肌 C7、第7颈椎 T1、第1胸椎 T2、第2胸椎 DI、椎间盘 IVF、椎间孔

2 脊髓外侧部断面:

- 脊髓外侧部、蛛网膜下腔内脑脊液、颈椎椎体、颈椎椎间盘



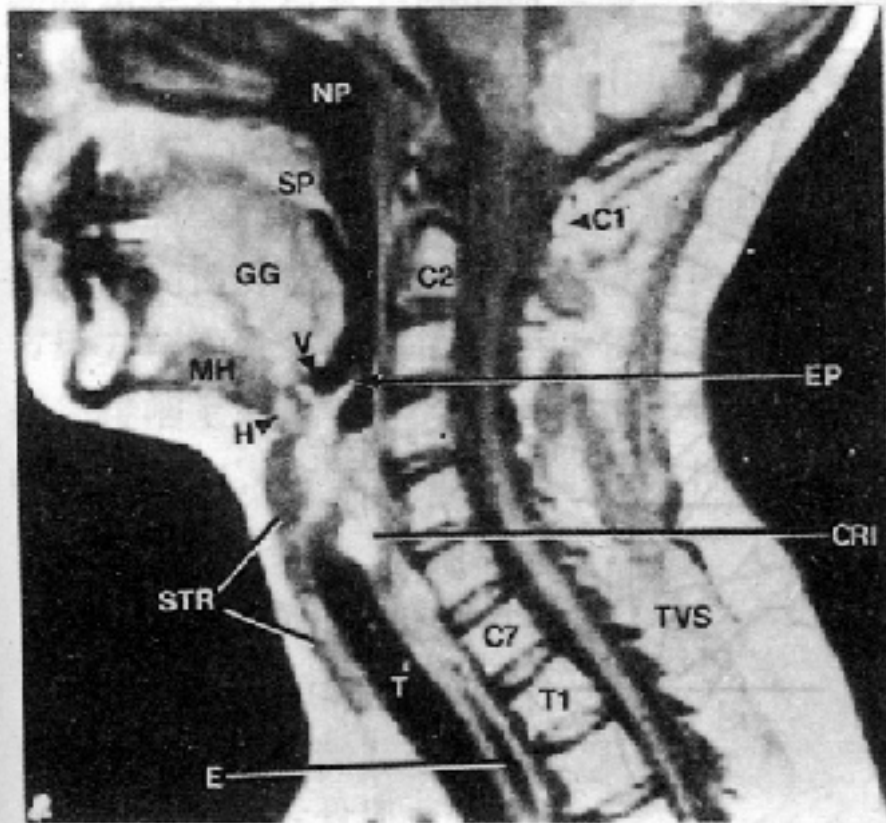
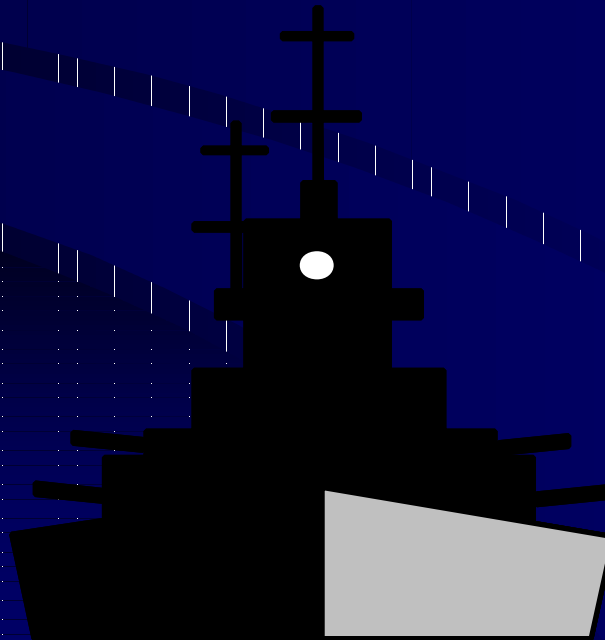


图 3—24 颈部矢状面磁共振扫描像
(SE1000/28)

NP、鼻咽部 SP、软腭 GG、颞舌肌 V、会
厌谷 EP、会厌 MH、下颌舌骨肌 H、舌骨
STR、胸骨舌骨肌 T、气管 E、食管 CRI、环状
软骨 C1、第1颈椎 C2、第2颈椎 C7、第7颈
椎 T1、第1胸椎 TVS、横突棘肌

3正中矢状断面:

- 脊髓、蛛网膜下腔内脑脊液、第1颈椎、第7颈椎椎体、颈椎椎间盘、棘突



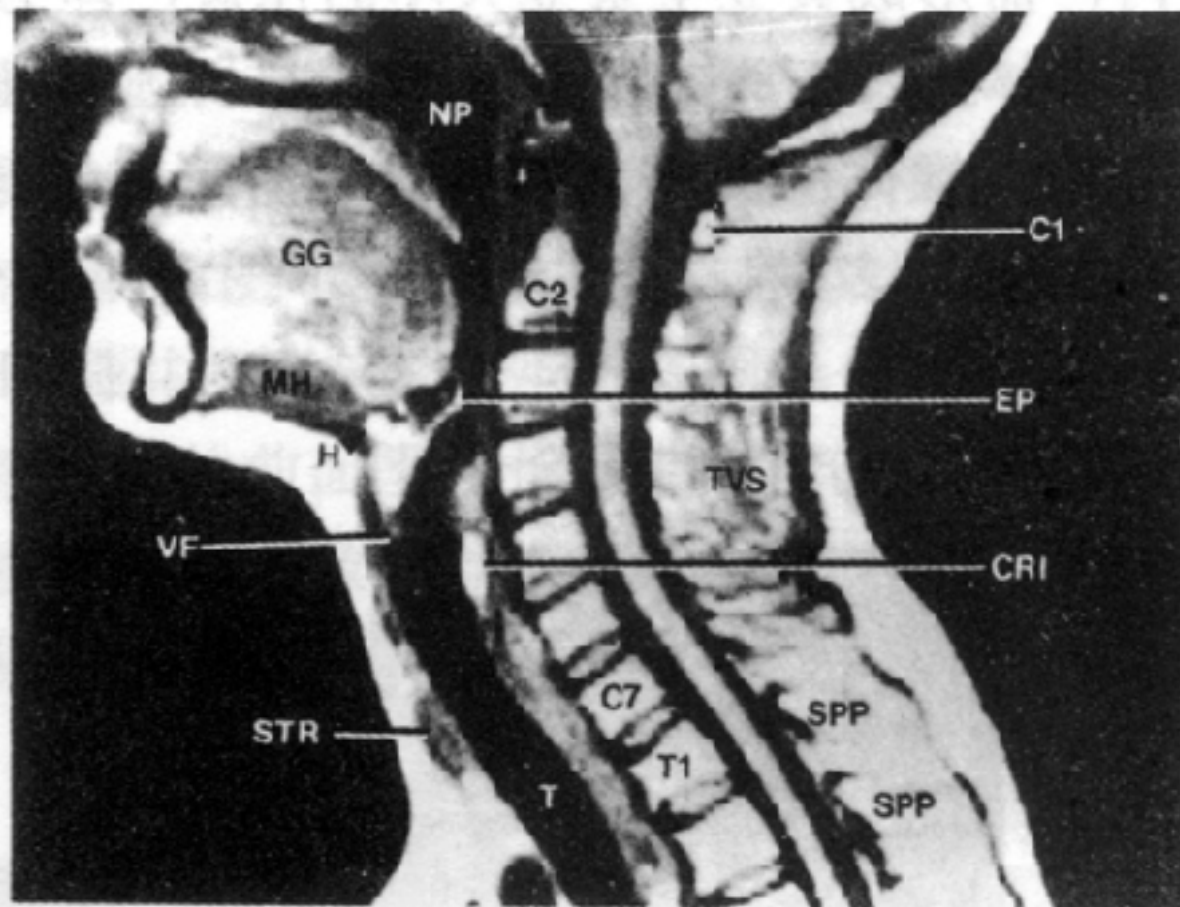


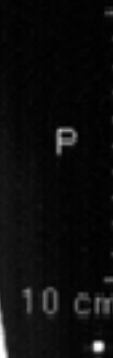
图 7-1 颈椎矢状面磁共振扫描像
(SE1000 / 28)

C1~7、第 1~7 颈椎

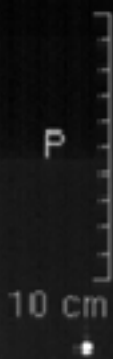
Sc 3
TSE/M
SL 9



Sc 3
TSE/M
SL 8



Sc 3
TSE/M
SL 7



Sc 3
TSE/M
SL 6



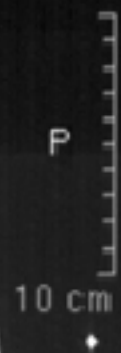
Sc 2
TSE/M
SL 9



Sc 2
TSE/M
SL 8



Sc 2
TSE/M
SL 7



Sc 2
TSE/M
SL 6

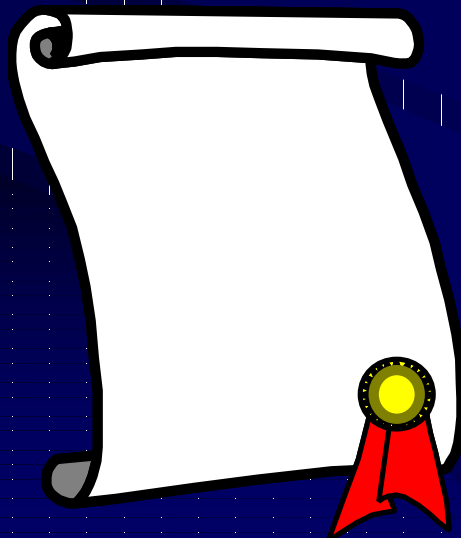


颈部MRI横断面解剖



1第1颈椎平面:

- 第1颈椎前结节、颈1椎前弓、颈2椎齿突、颈1侧块、横突、横突孔、颈1椎后结节、颈1椎后弓、椎孔、脊髓、蛛网膜下腔内脑脊液



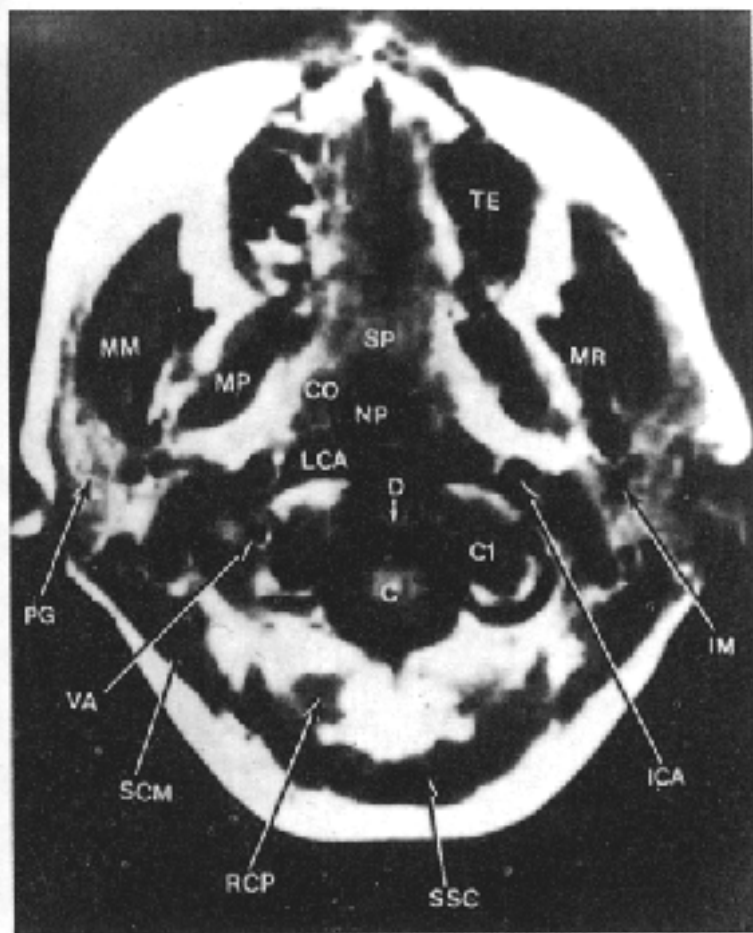


图 2—57 面部横断面磁共振扫描像 (SE500/28)
TE、牙齿 MM、咬肌 MP、翼内肌 SP、软腭
CO、咽缩肌 NP、鼻咽腔 LCA、头长肌 D、枢椎
齿突 C₁、第一颈椎 C、脊髓 IM、上颌动脉 ICA、
颈内动脉 VA、椎动脉 PG、腮腺 SCM、胸锁乳
突肌 RCP、头后直肌 SSC、头半棘肌

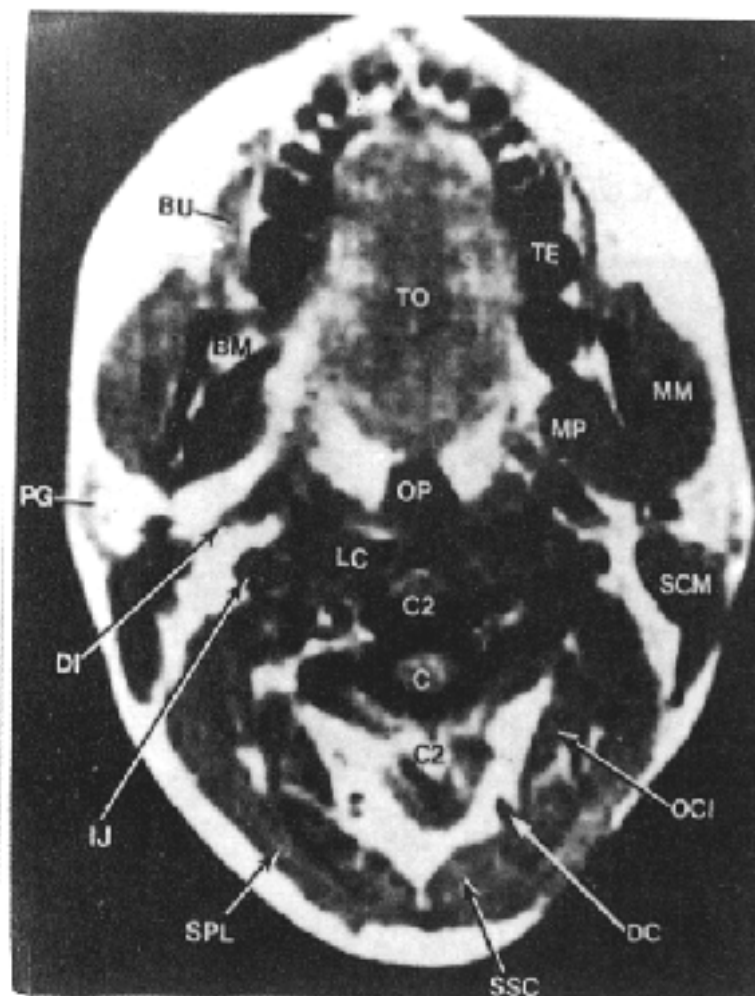


图 2—58 面部横断面磁共振扫描像 (SE500/28)
TE、牙齿 BU、颊肌 TO、舌 BM、下颌支 MP、
翼内肌 MM、咬肌 OP、口咽腔 LC、颈长肌
SCM、胸锁乳突肌 C2、第2颈椎 C、脊髓 PG、
腮腺 DI、二腹肌后腹 IJ、颈内静脉 SPL、头夹
肌 SSC、头半棘肌 DC、颈深静脉 OCI、头下斜
肌

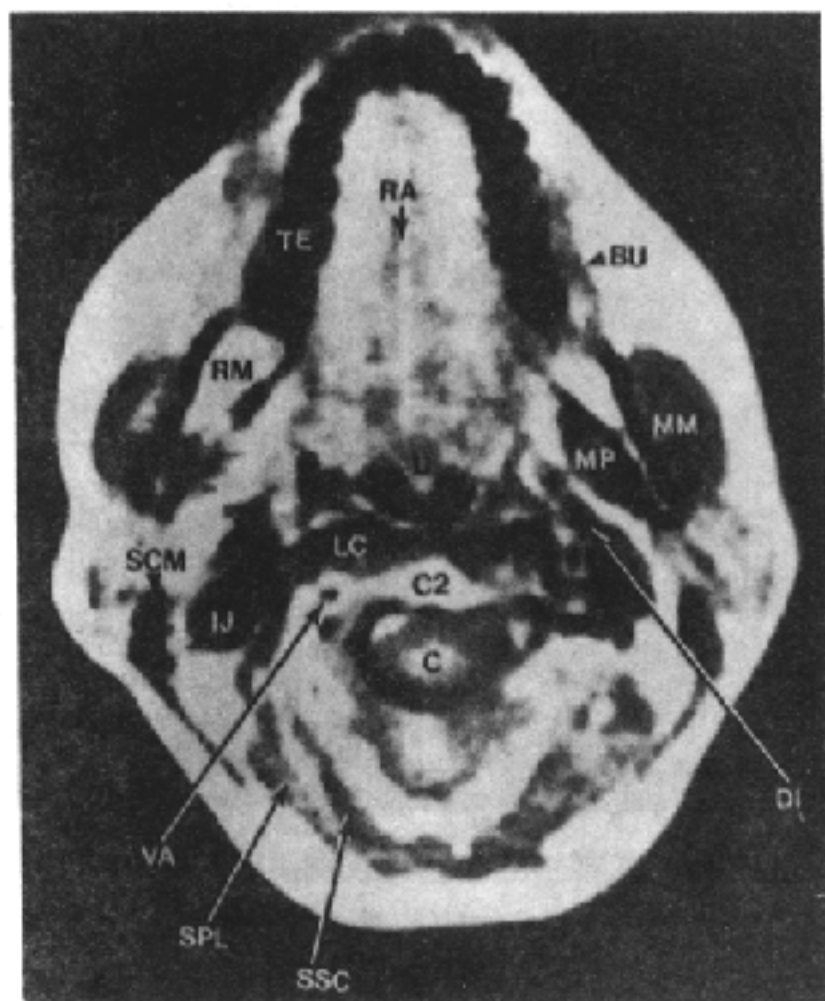


图 2—59 面部横断面磁共振扫描像 (SE500/28)
 TE、牙齿 BU、颊肌 RA、舌正中缝 RM、下颌支 MM、咬肌 MP、翼内肌 U、悬雍垂 LC、颈长肌 C2、第 2 颈椎 C、脊髓 D1、二腹肌后腹 SCM、胸锁乳突肌 IJ、颈内静脉 VA、椎动脉 SPL、头夹肌 SSC、头半棘肌

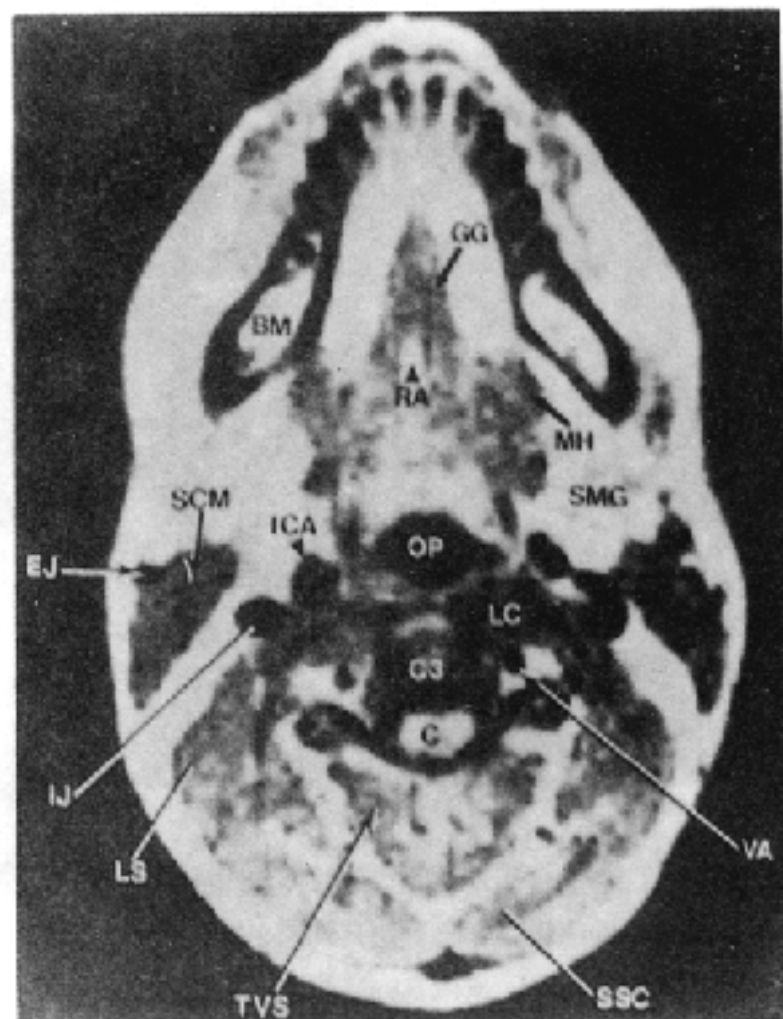


图 2—60 面部横断面磁共振扫描像 (SE500/28)
 BM、下颌体 GG、颞舌肌 RA、舌正中缝 MH、下颌舌骨肌 SMG、下颌下腺 OP、口咽腔 C3、第三颈椎 C、脊髓 LC、颈长肌 SCM、胸锁乳突肌 EJ、颈外静脉 ICA、颈内动脉 IJ、颈内静脉 VA、椎动脉 LS、肩胛提肌 TVS、横突棘肌 SSC、头半棘肌

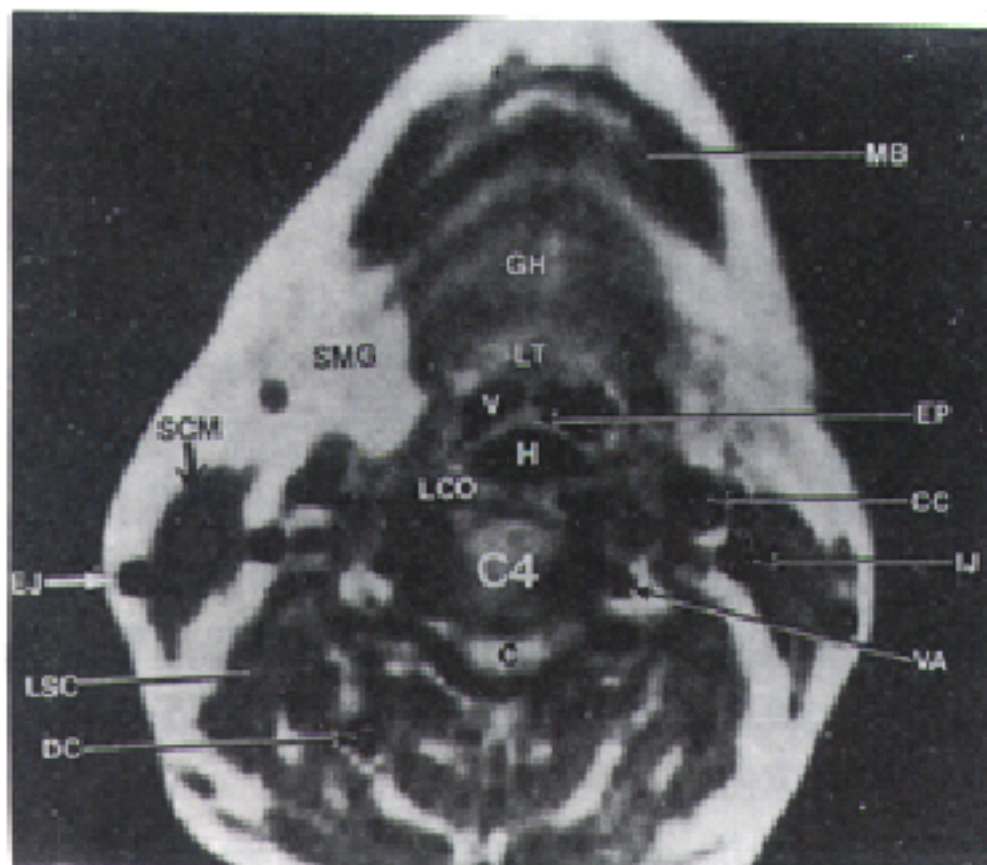


图 3—1 颈部横断面磁共振扫描像 (SE2000/28)

MB、下颌体 GH、颏舌骨肌 LT、舌扁桃体 V、会厌谷 EP、会厌 H、咽下部 LCO、颈长肌 SMG、下颌下腺 SCM、胸锁乳突肌 C4、第四颈椎 C、脊髓 CC、颈总动脉 IJ、颈内静脉 VA、椎动脉 EJ、颈外静脉 DC、颈深静脉 LSC、肩胛提肌

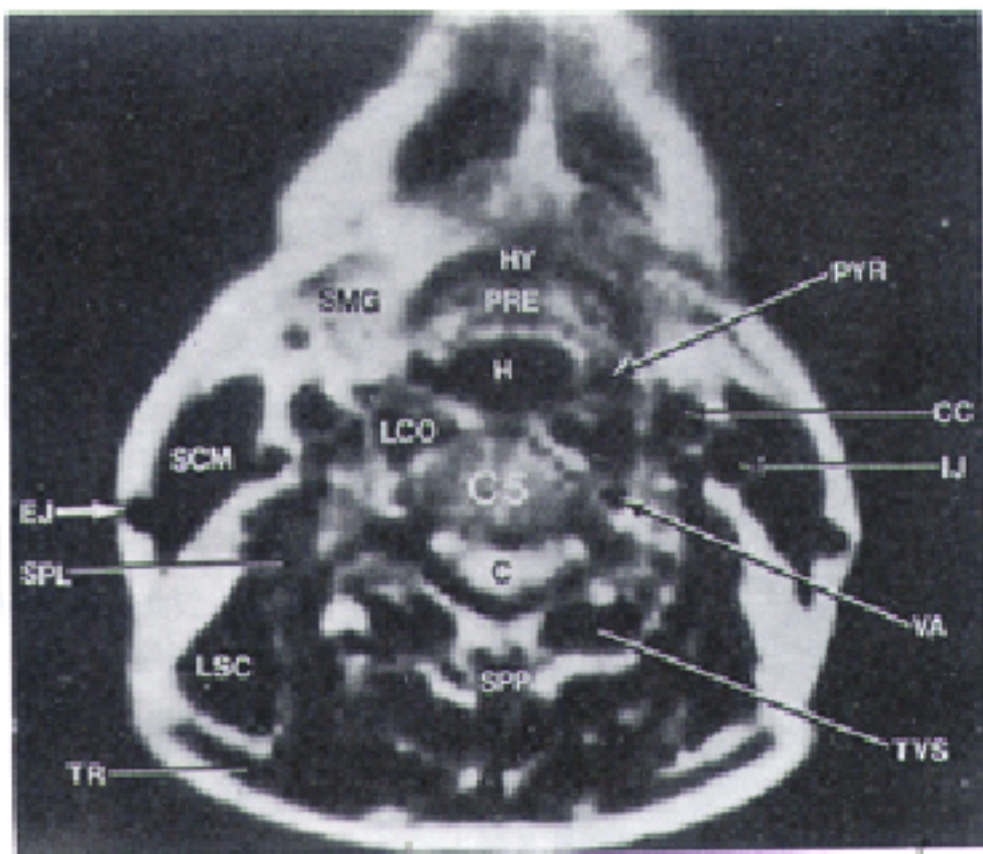


图 3—2 颈部横断面磁共振扫描像 (SE2000/28)

HY、舌骨 PRE、会厌前脂肪 H、咽下部 PYR、梨状隐窝 SMG、下颌下腺 SCM、胸锁乳突肌 LCO、颈长肌 C5、第五颈椎 C、脊髓 CC、颈总动脉 IJ、颈内静脉 VA、椎动脉 EJ、颈外静脉 SPL、夹肌 LSC、肩胛提肌 TR、斜方肌 SPP、棘突 TVS、横突棘肌

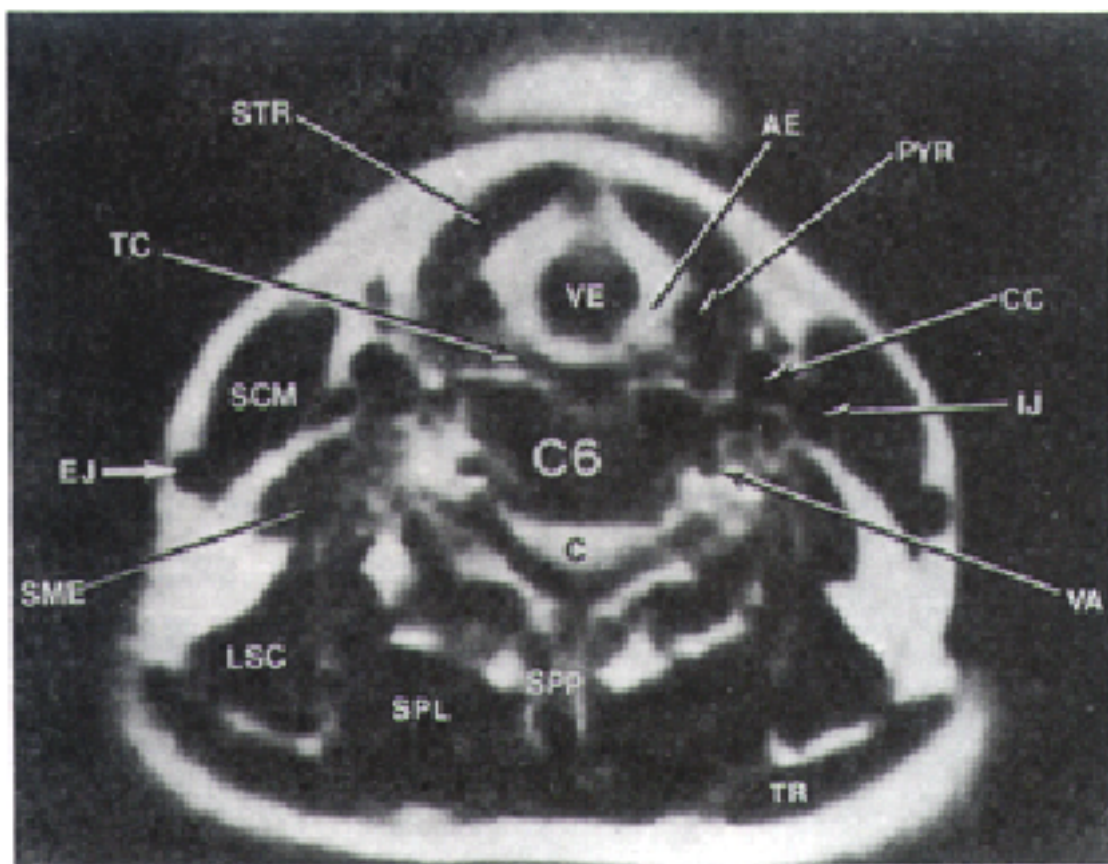


图 3—3 颈部横断面磁共振扫描像 (SE2000/28)

VE、喉前庭 AE、杓会厌皱
STR、胸骨舌骨肌

TC、甲状软骨 PYR、梨状
隐窝 SCM、胸锁乳突肌 SME、
中斜角肌 EJ、颈外静脉 CC、
颈总动脉 C6、第六颈椎 C、脊
髓 IJ、颈内静脉 VA、椎动脉
TR、斜方肌 SPP、棘突 SPL、
夹肌 LSC、肩胛提肌

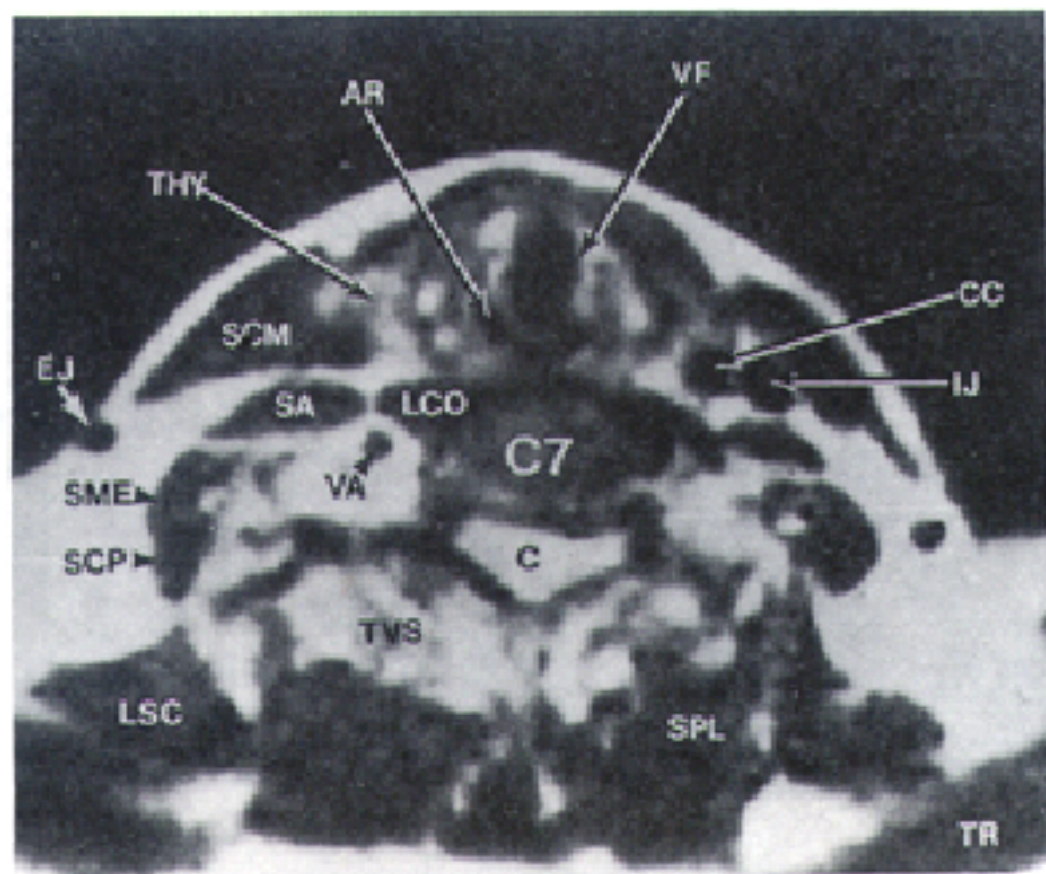
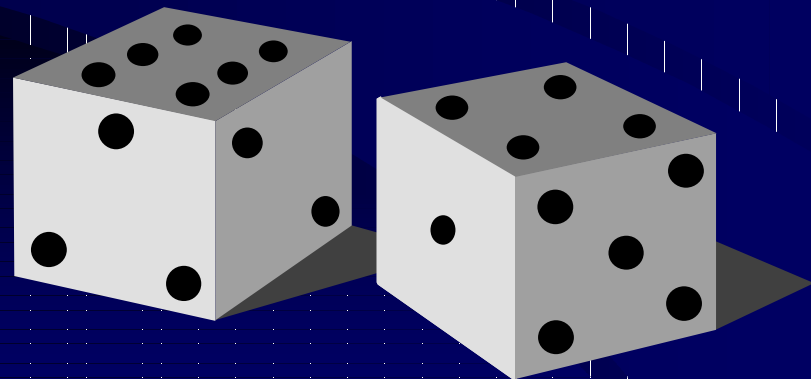


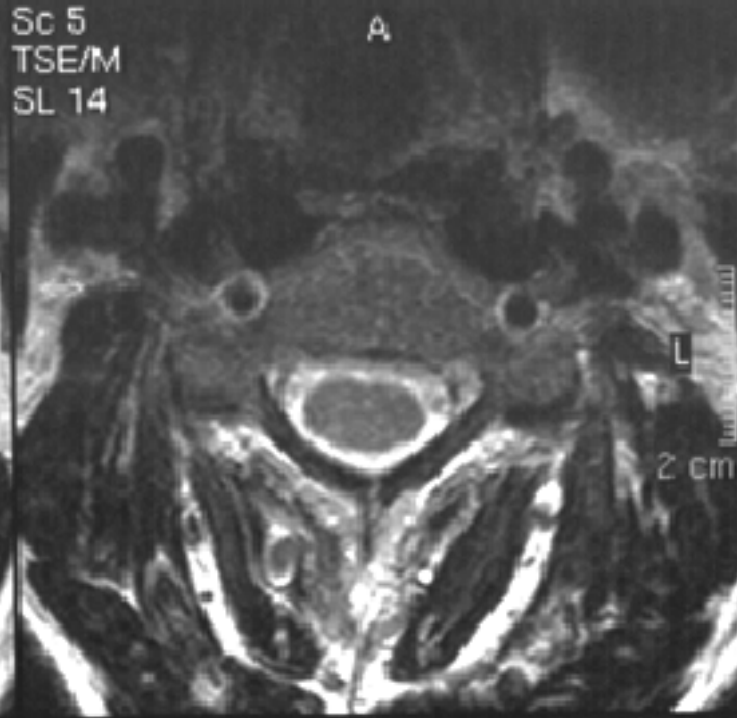
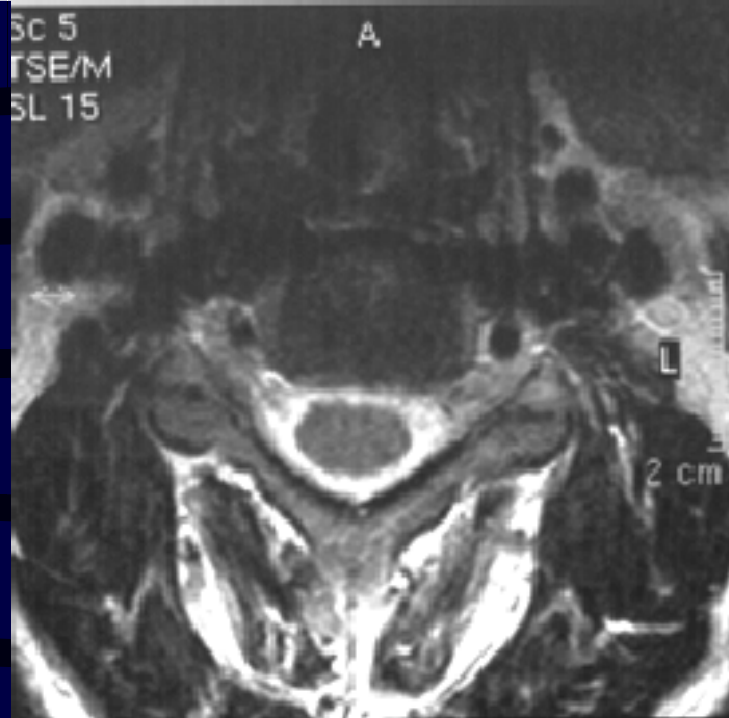
图 3—4 颈部横断面磁共振扫描像(SE2000/28)

AR、杓状软骨 VF、声带
 THY、甲状腺 LCO、颈长肌 SCM、
 胸锁乳突肌 SA、前斜角肌 EJ、
 颈外静脉 C7、第7颈椎 C、脊髓
 SME、中斜角肌 SCP、后斜角肌
 VA、椎动脉 CC、颈总动脉 IJ、颈
 内静脉 TVS、横突棘肌 LSC、肩
 胛提肌 SPL、夹肌 TR、斜方肌

2颈椎椎间盘平面:

- 颈椎椎间盘、椎体钩(钩突)、后纵韧带、外侧隐窝、椎间孔内脊神经、黄韧带、脊髓、蛛网膜下腔内脑脊液

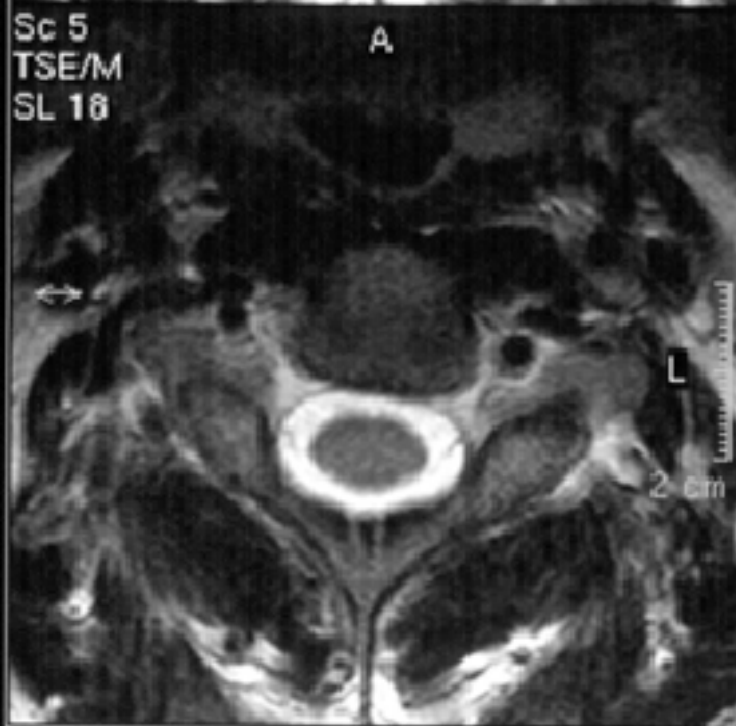
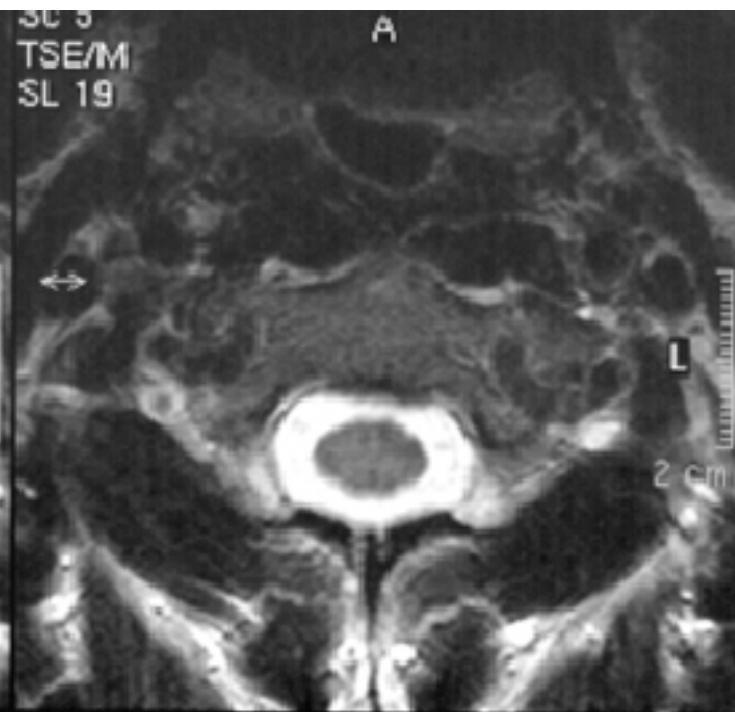
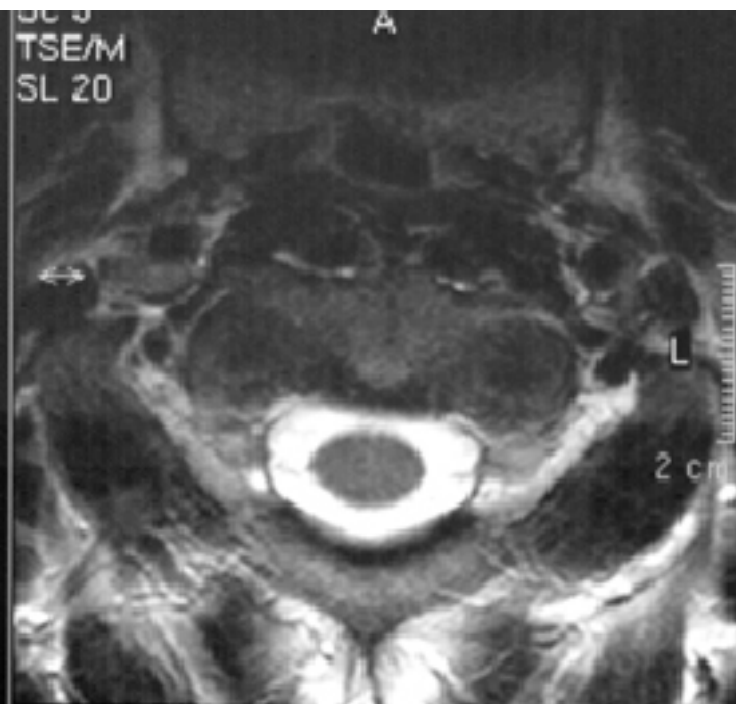




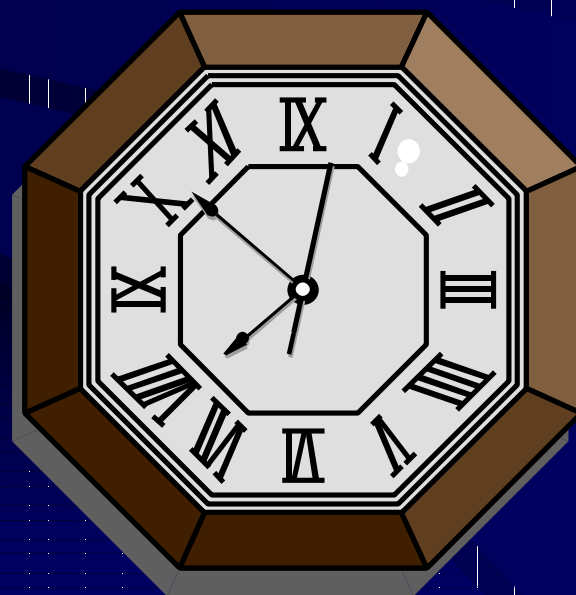
3颈椎椎体平面:

- 颈椎椎体、外侧隐窝、椎间孔内脊神经、黄韧带、脊髓、蛛网膜下腔内脑脊液





胸部MRI矢状断面解剖



1胸椎椎间孔断面:

• 胸椎椎体外侧部、椎弓根、关节突、胸椎椎间孔内脂肪和脊神经、椎间盘外侧部

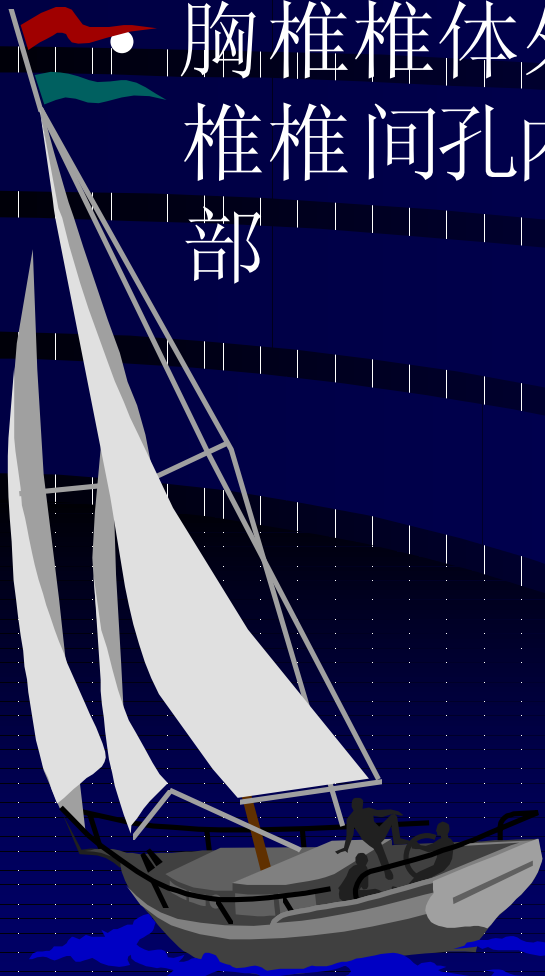


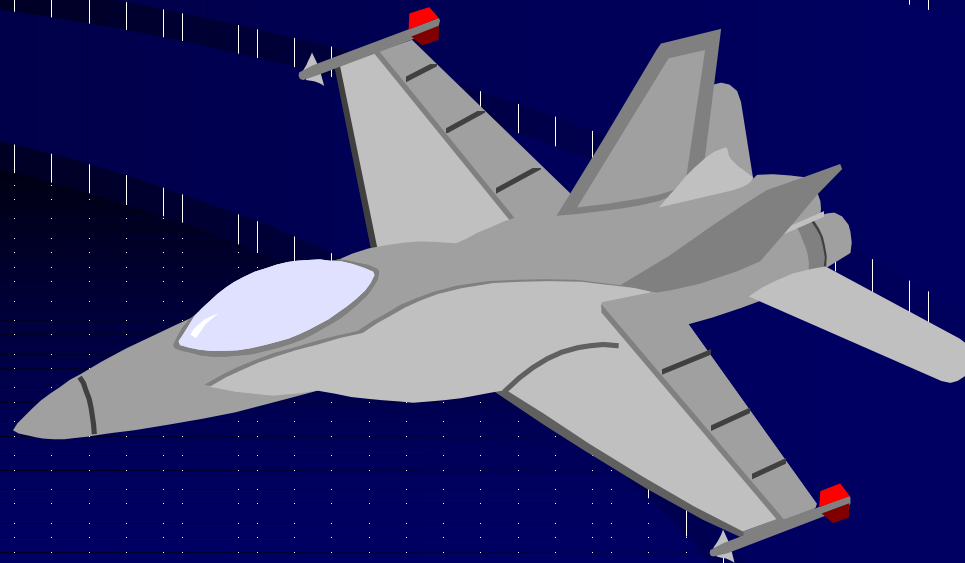


图 7~3 胸椎矢状面磁共振扫描像
(SE1000 / 28)

箭头示 椎间孔内的神经根 P 椎弓根

2 脊髓外侧部断面:

- 脊髓外侧部、蛛网膜下腔内脑脊液、椎体、椎间盘、后纵韧带、硬膜外脂肪、黄韧带



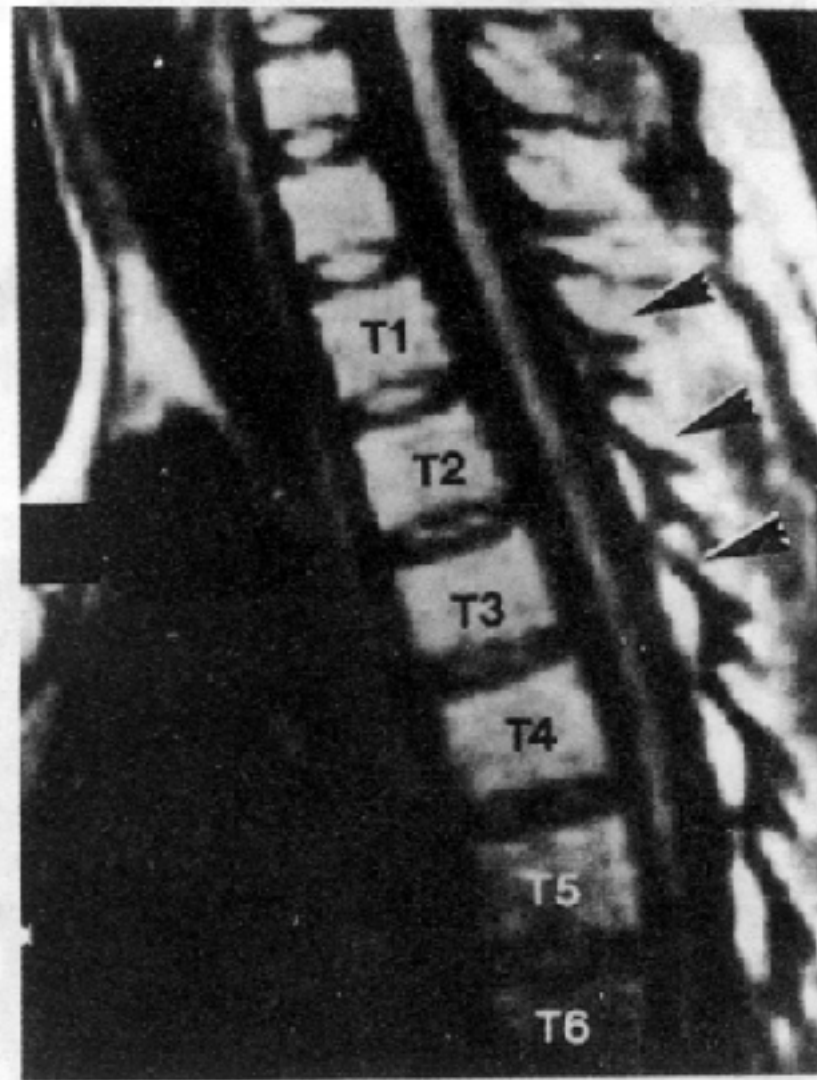


图 7~2 胸椎矢状面磁共振扫描像
(SE1000 / 28)

T1~6 第 1~6 胸椎 箭头示 棘突

3正中矢状断面:

- 脊髓、脊髓圆锥、蛛网膜下腔内脑脊液、椎体、椎间盘、后纵韧带、硬膜外脂肪、黄韧带



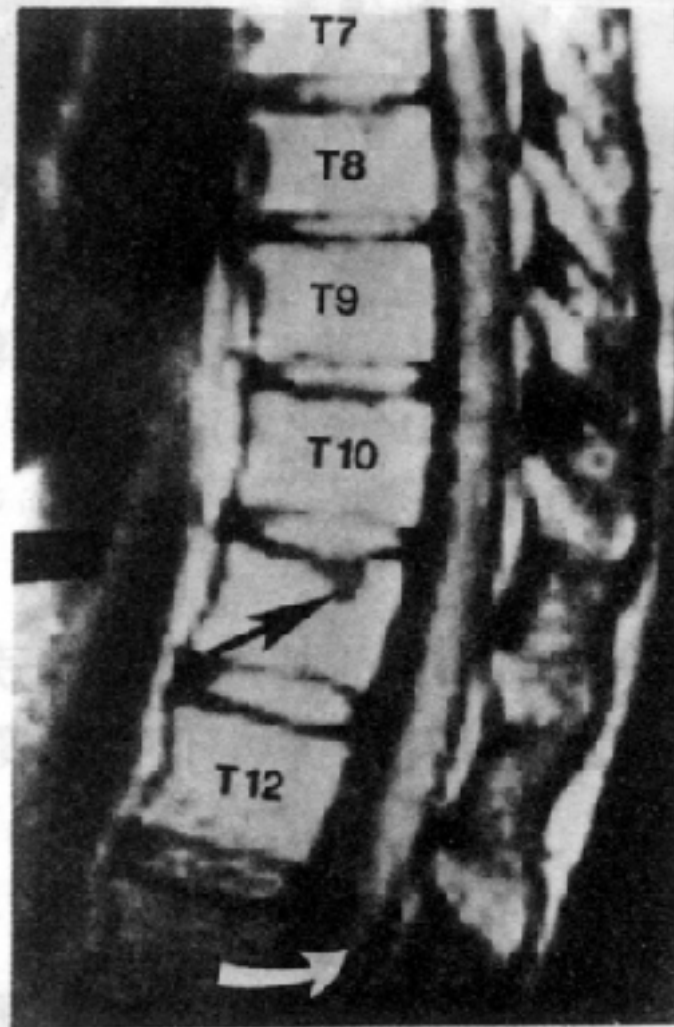


图 7-4 胸椎矢状面磁共振扫描像
(SE1000 / 28)

T7~12 第 7~12 胸椎 黑箭头示 Schmorl's
结节 白箭头示脊髓圆锥

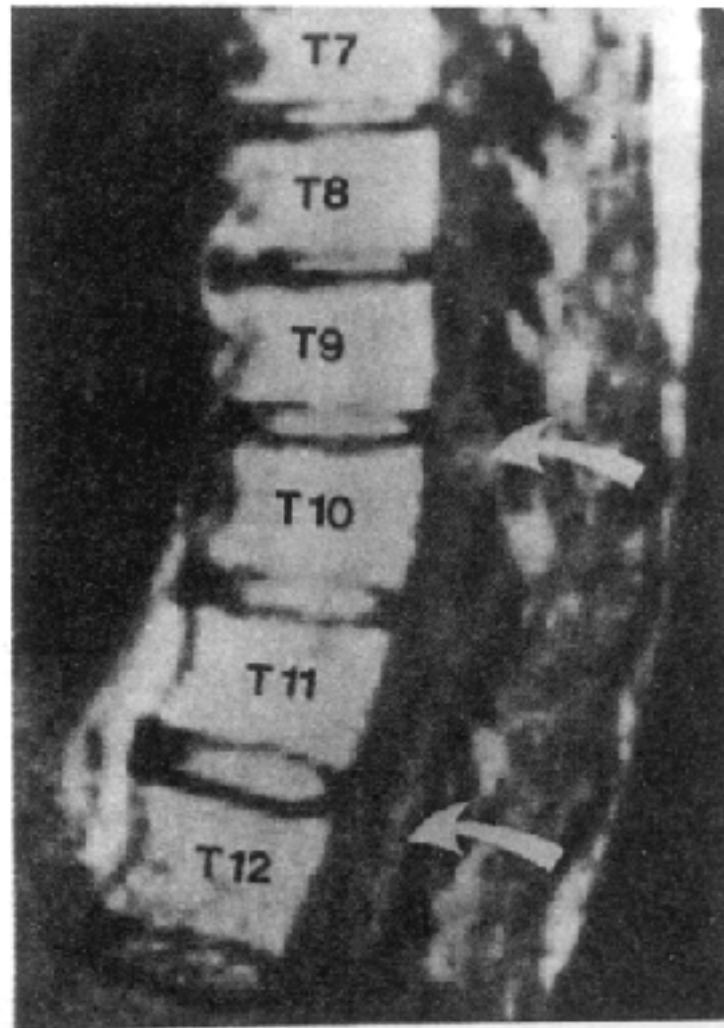


图 7—5 胸椎矢状面磁共振扫描像
(SE1000 / 28)

箭头示椎管内脊髓和圆锥产生的混合信号、
T7~12 第 7~12 胸椎

Sc 8
TSE/M
SL 7



Sc 8
TSE/M
SL 6



Sc 8
TSE/M
SL 5



Sc 8
TSE/M
SL 4





胸部MRI横断面解剖



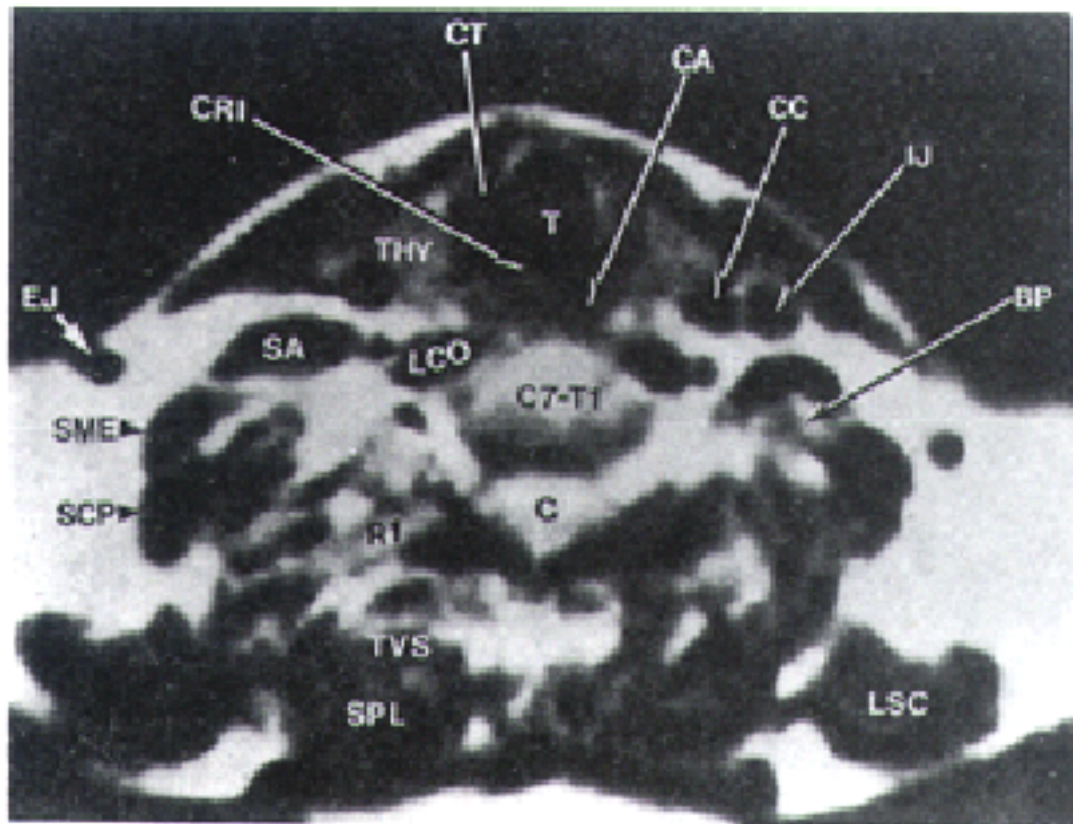


图 3—5 颈部横断面磁共振扫描像 (SE2000/28)

T、气管 CT、环甲肌 CRI、环状软骨 CA、环杓后肌 THY、甲状腺 CC、颈总动脉 IJ、颈内静脉 BP、臂丛 C7—T1、第7颈椎,第1胸椎 C、脊髓 LCO、颈长肌 SA、前斜角肌 SME、中斜角肌 SCP、后斜角肌 EJ、颈外静脉 RI、第一肋 TVS、横突棘肌 SPL、夹肌 LSC、肩胛提肌

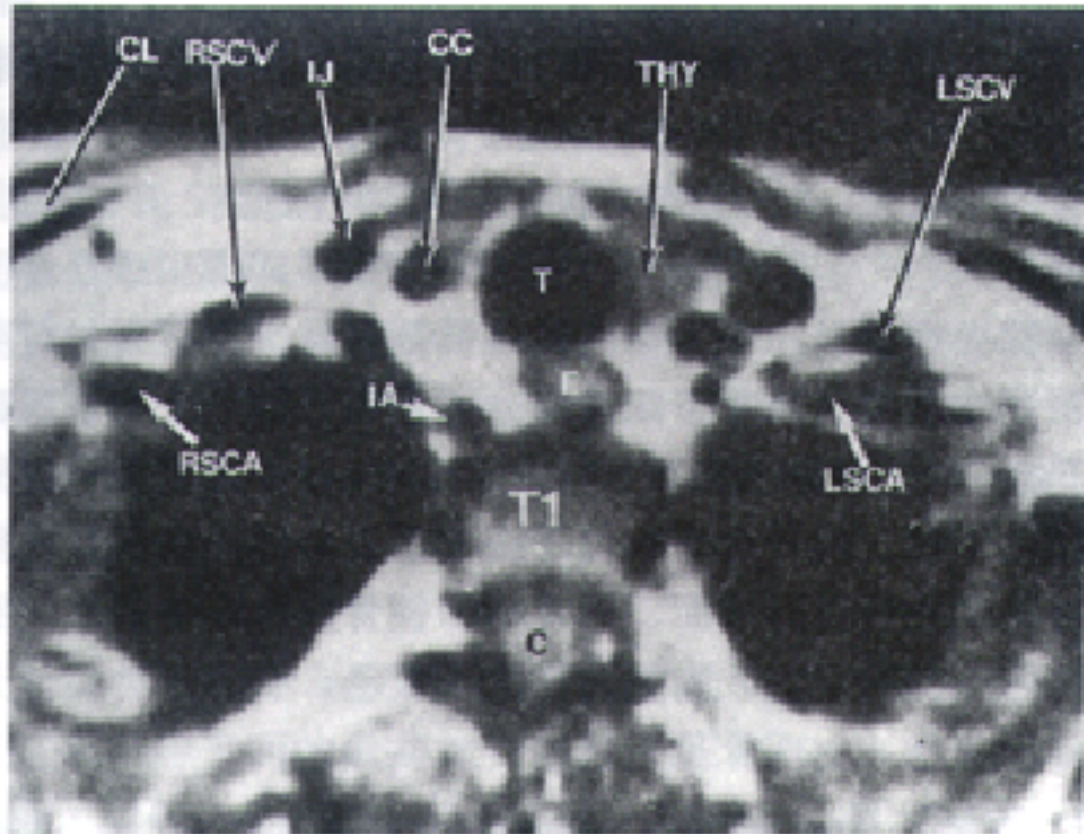
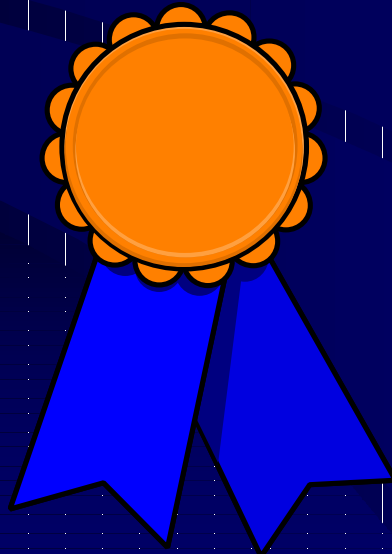


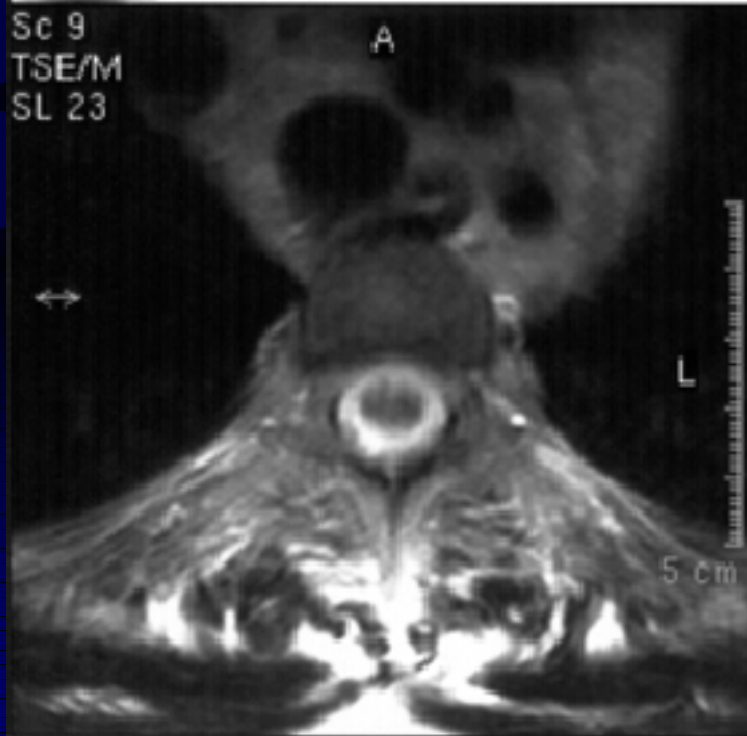
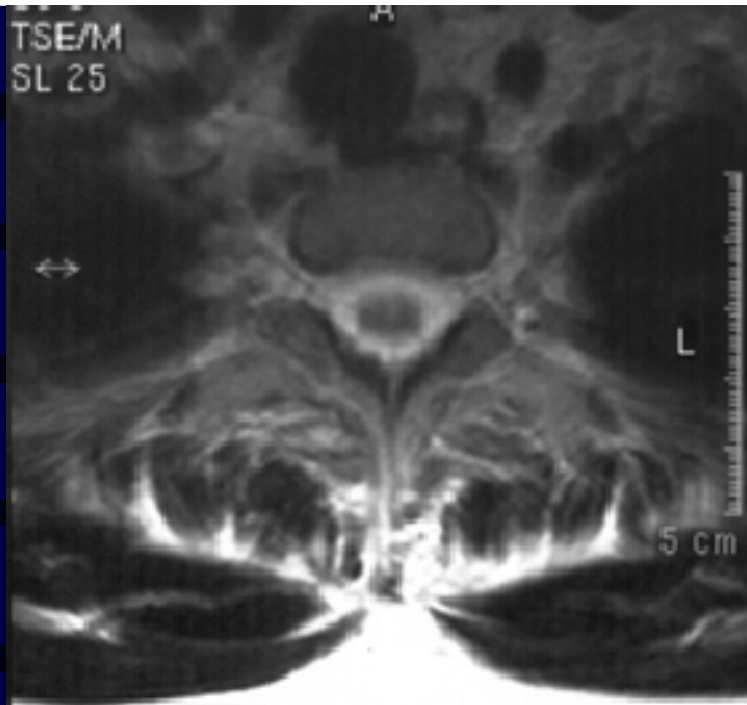
图 3—6 颈部横断面磁共振扫描像 (SE2000/28)

T、气管 THY、甲状腺 E、食管 CC、颈总动脉 IJ、颈内静脉 RSCV、右锁骨下静脉 CL、锁骨 LSCV、左锁骨下静脉 LSCA、左锁骨下动脉 IA、无名动脉 RSCA、右锁骨下动脉 T1、第一胸椎 C、脊髓

1胸椎椎体平面:

- 胸椎椎体、椎弓根、椎板、棘突、椎孔、横突、肋-胸椎体关节、肋-横突关节、脊髓、蛛网膜下腔内脑脊液

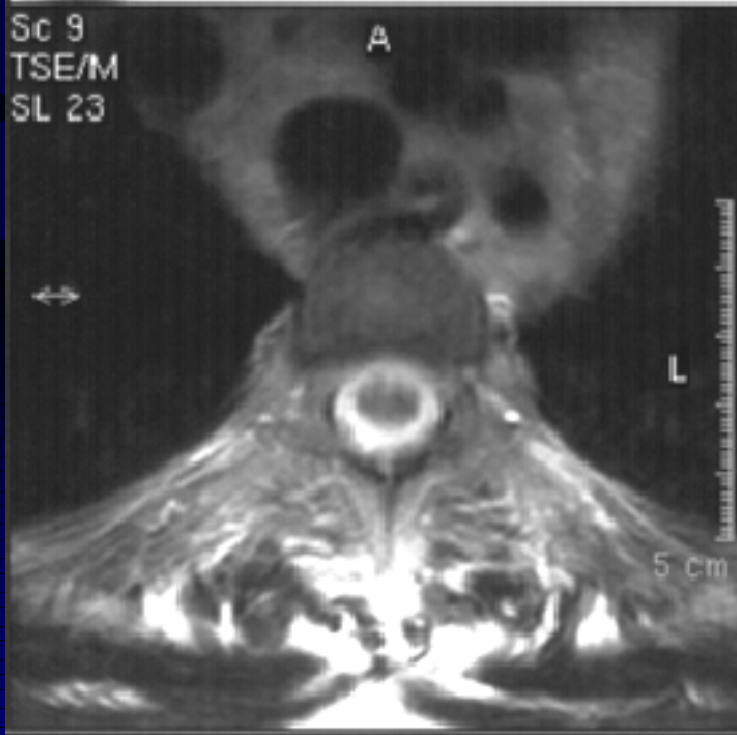
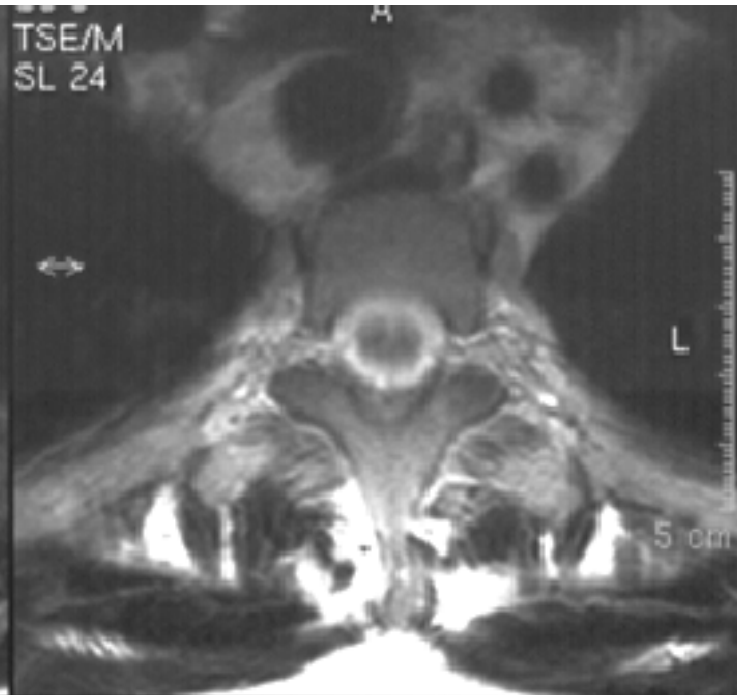
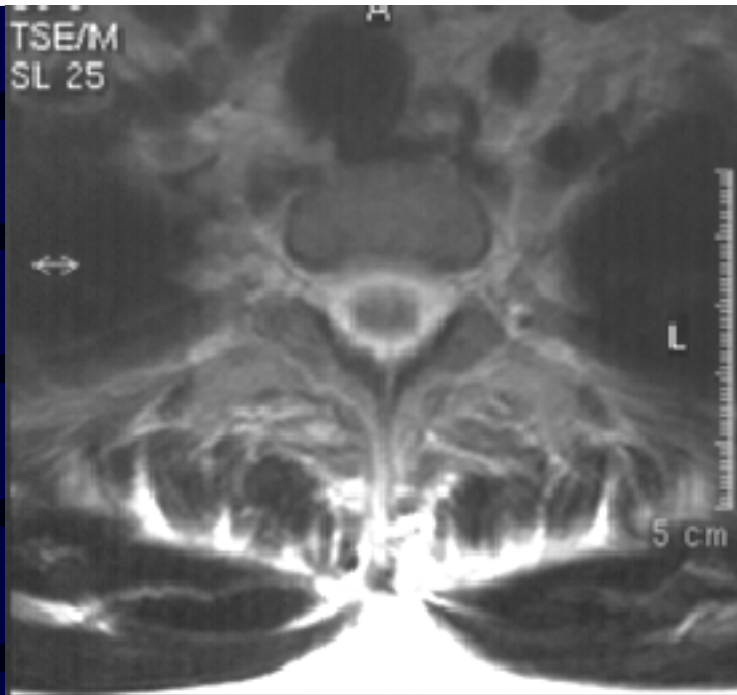




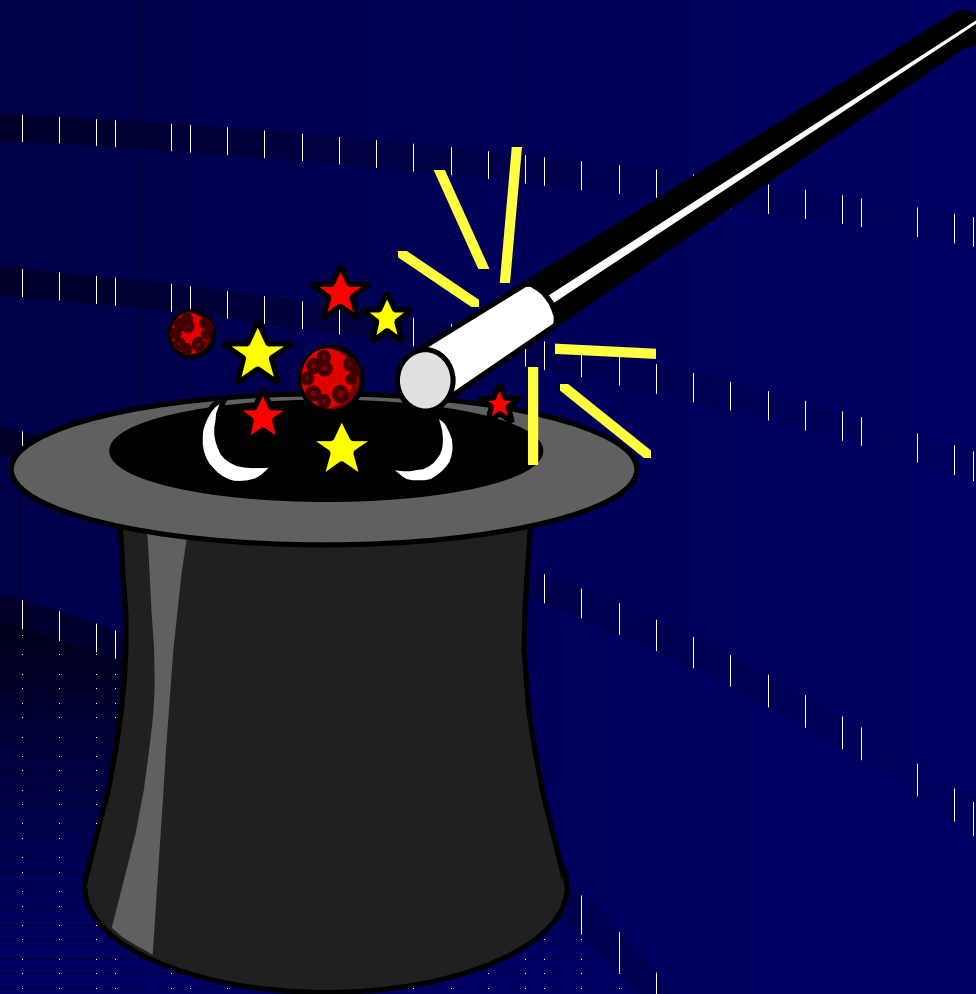
2胸椎椎间盘平面:

- 胸椎椎间盘、后纵韧带、外侧隐窝内脊神经、椎间孔内脊神经、黄韧带、脊髓、蛛网膜下腔内脑脊液



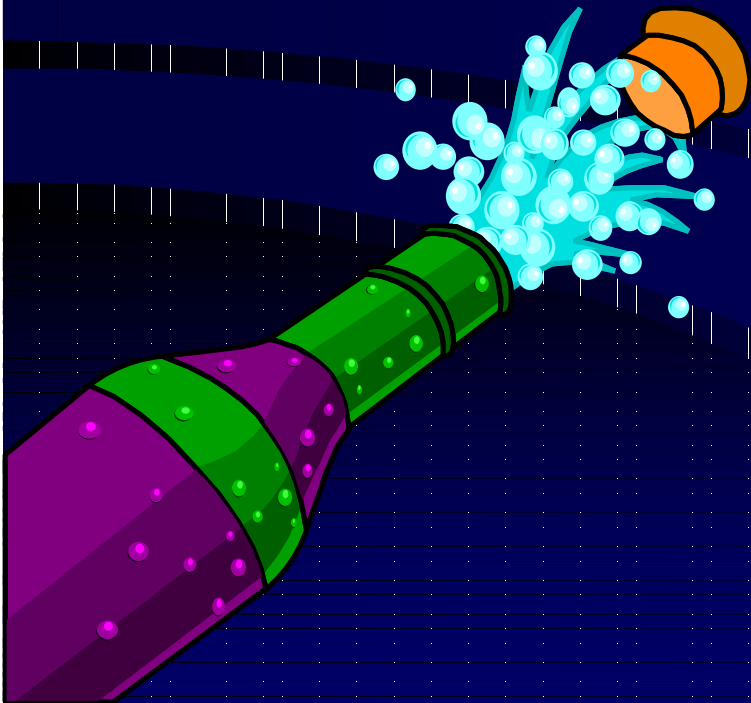


腰部MRI矢状断面解剖



1 腰椎椎间孔断面:

- 腰椎椎体外侧部、椎弓根、关节突、椎间孔内脂肪和脊神经、椎间盘外侧部纤维环



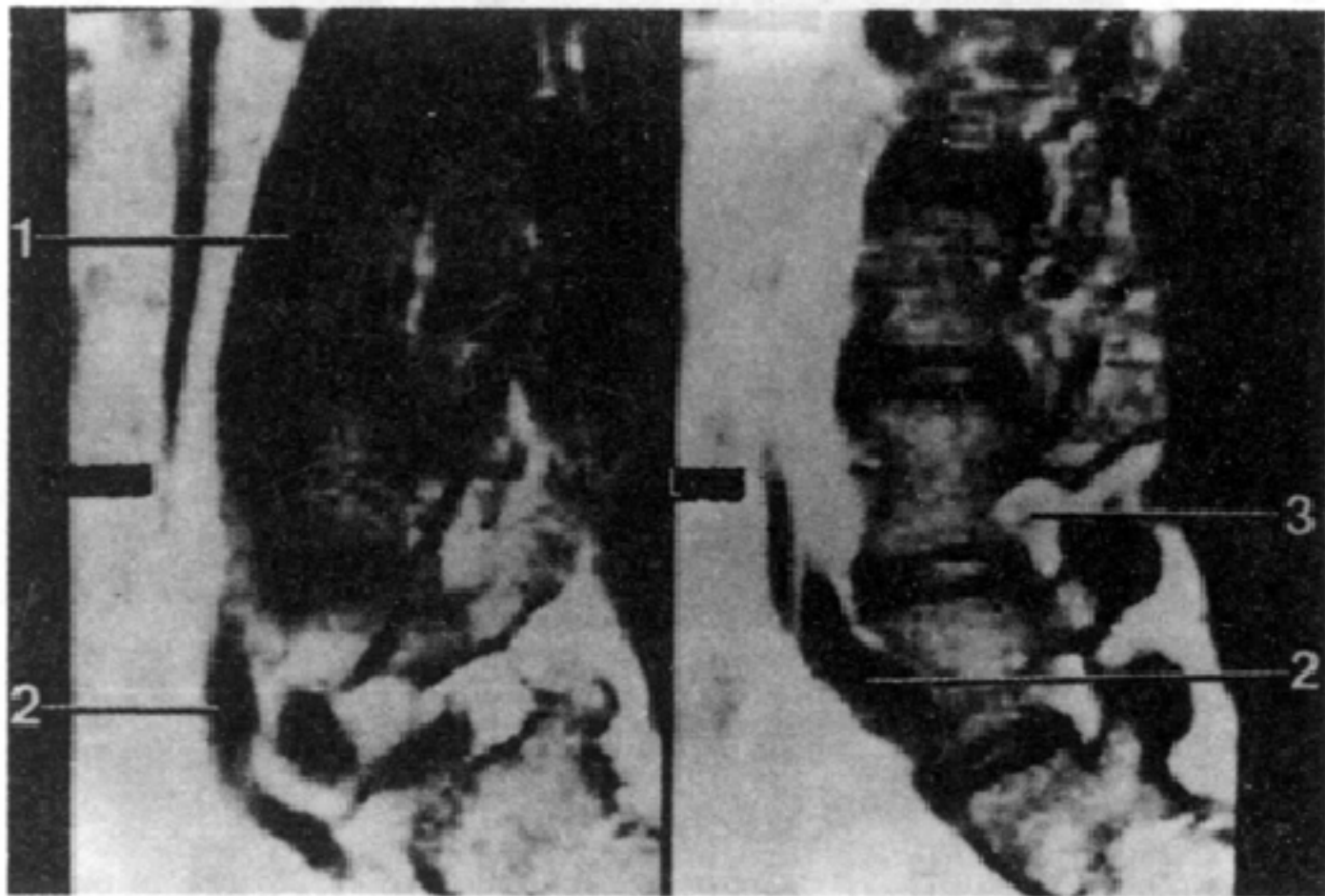


图 7-6 腰椎矢状面磁共振扫描像

(SE1000 / 28)

1. 腰大肌 2. 左髂总静脉 3. 椎间孔内的神经根。

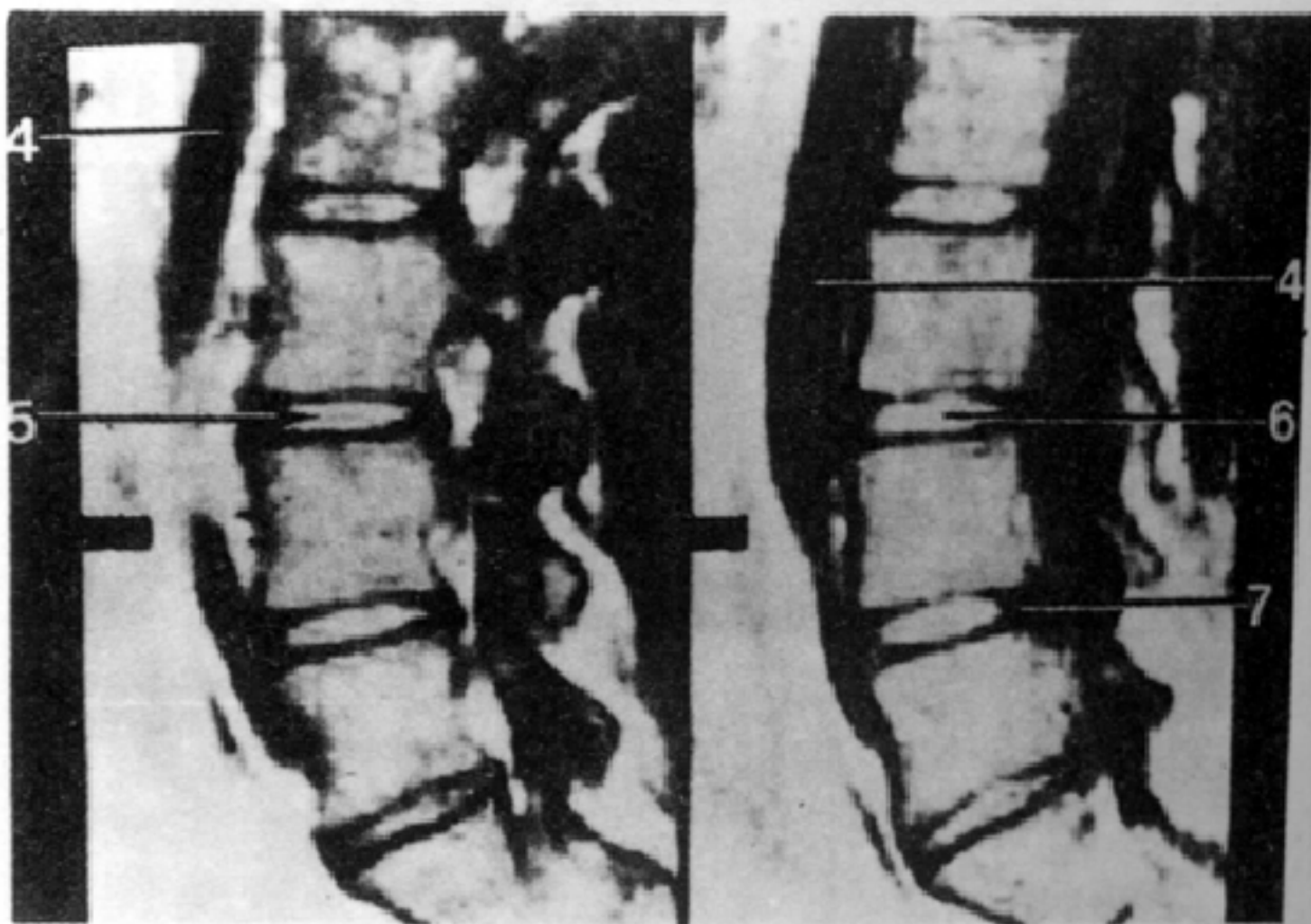


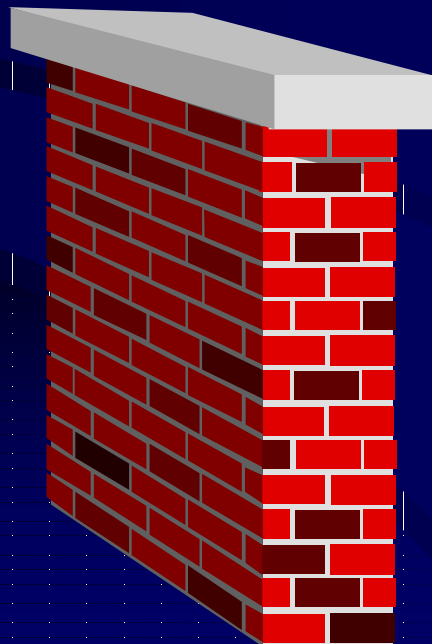
图 7—7 腰椎矢状面磁共振扫描像

(SE1000 / 28)

4.主动脉 5.核内裂 6.髓核 7.纤维环

2正中矢状断面:

- 硬膜囊、硬膜囊内脑脊液、椎体、椎间盘纤维环、髓核、后纵韧带、硬膜外脂肪、黄韧带



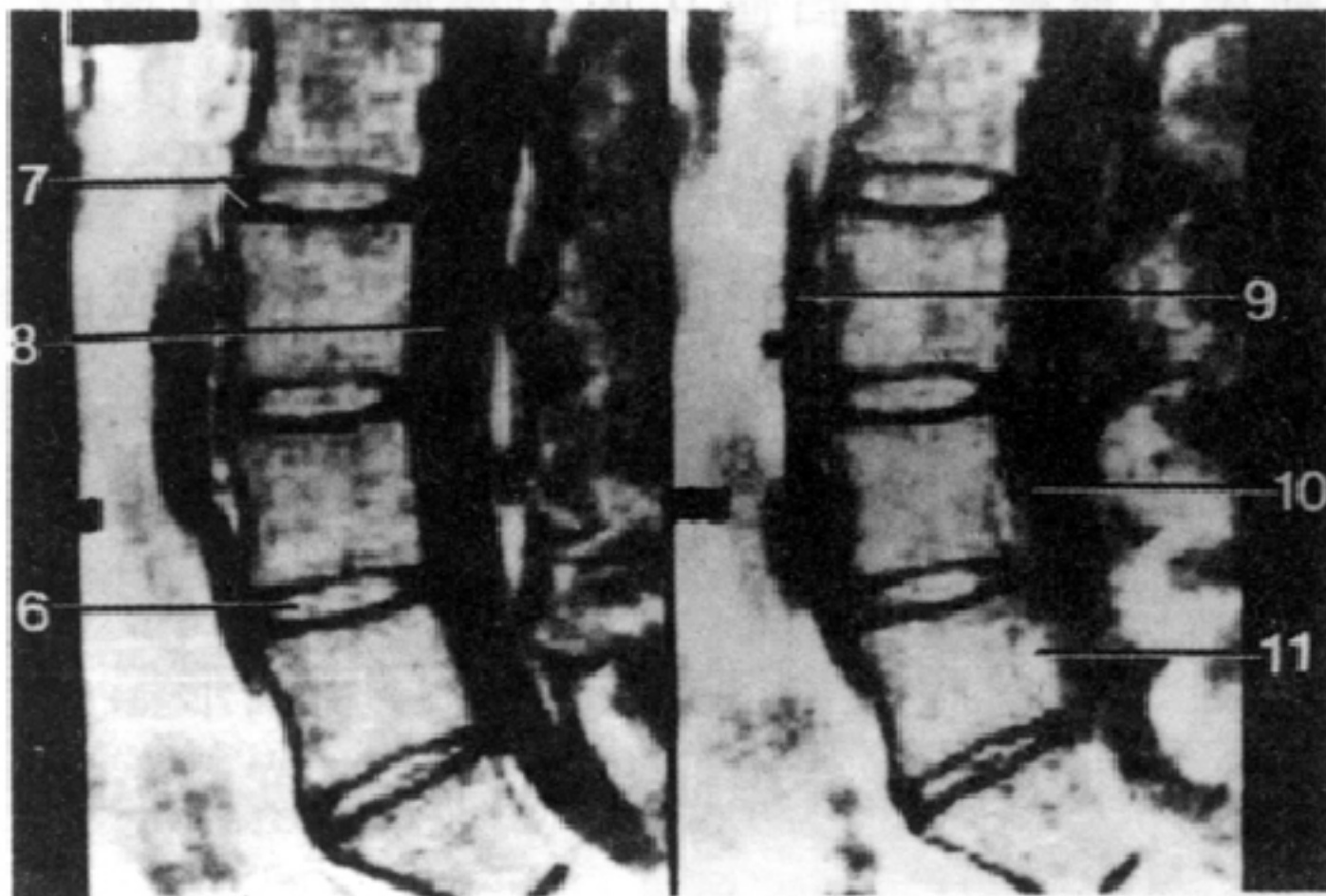


图 7-8 腰椎矢状面磁共振扫描像

(SE 1000 / 28)

- 6.髓核 7.纤维环 8.硬脊膜囊 9.下腔静脉
10.外侧隐窝 11.硬脊膜外的脂肪

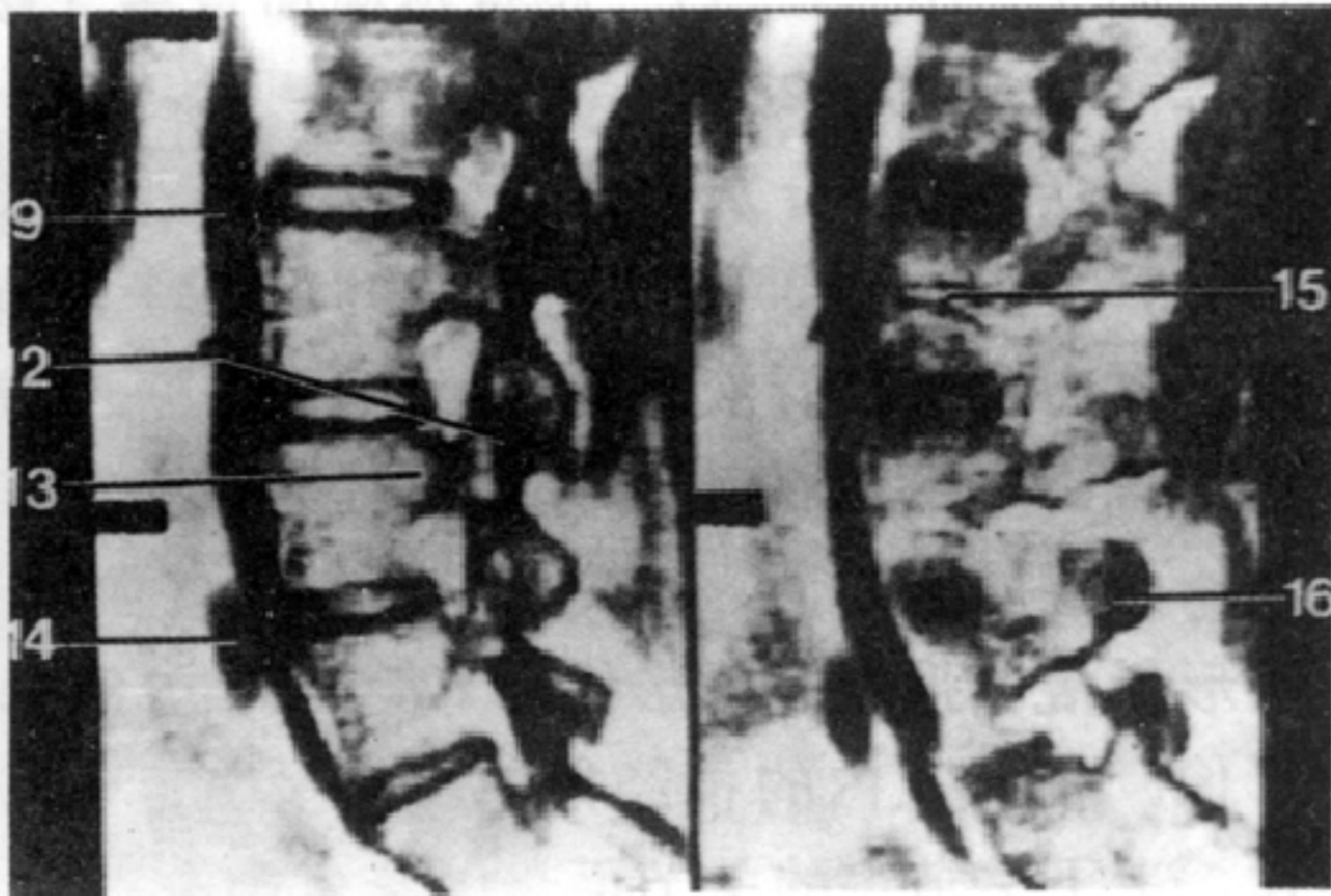
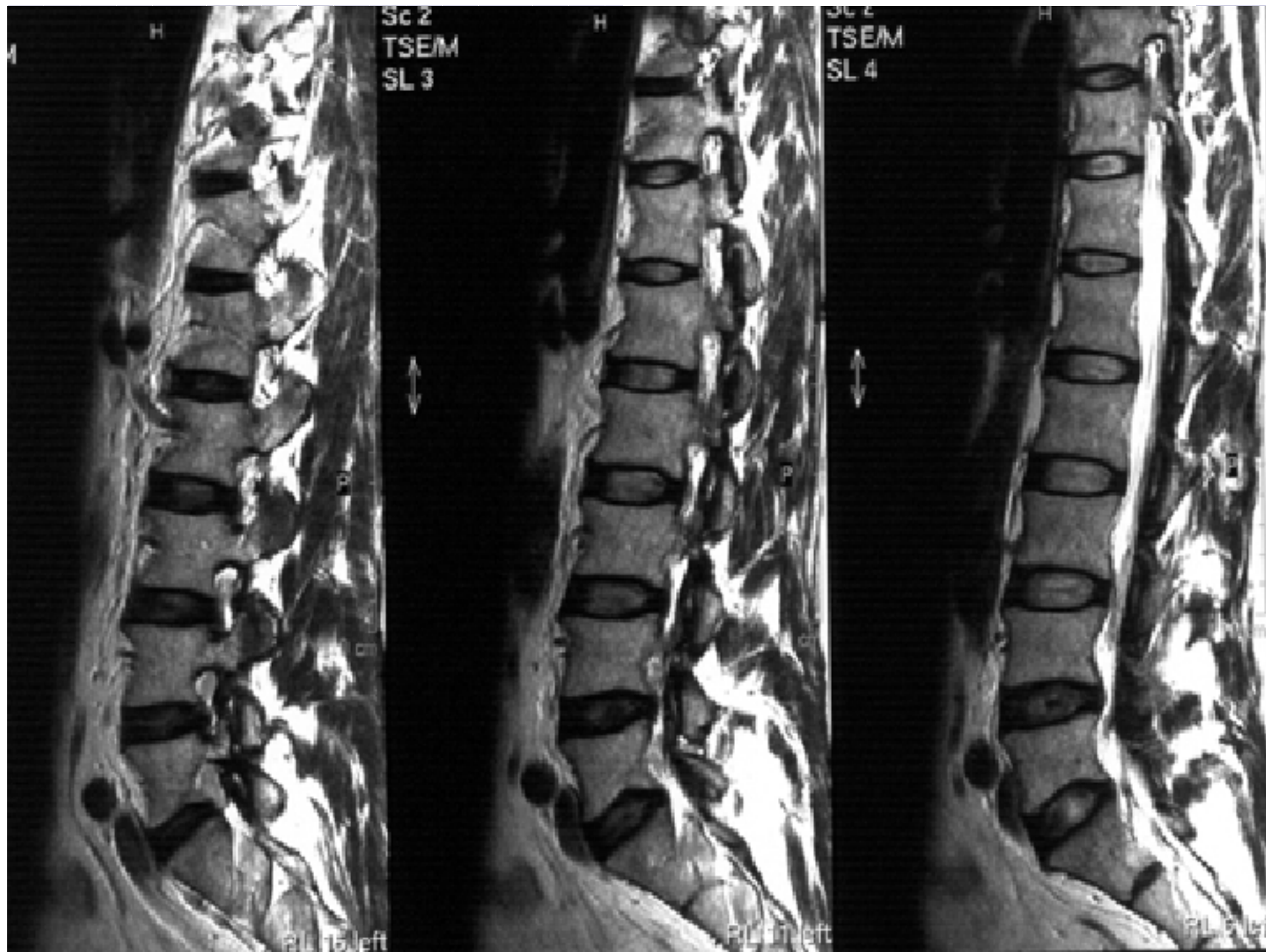


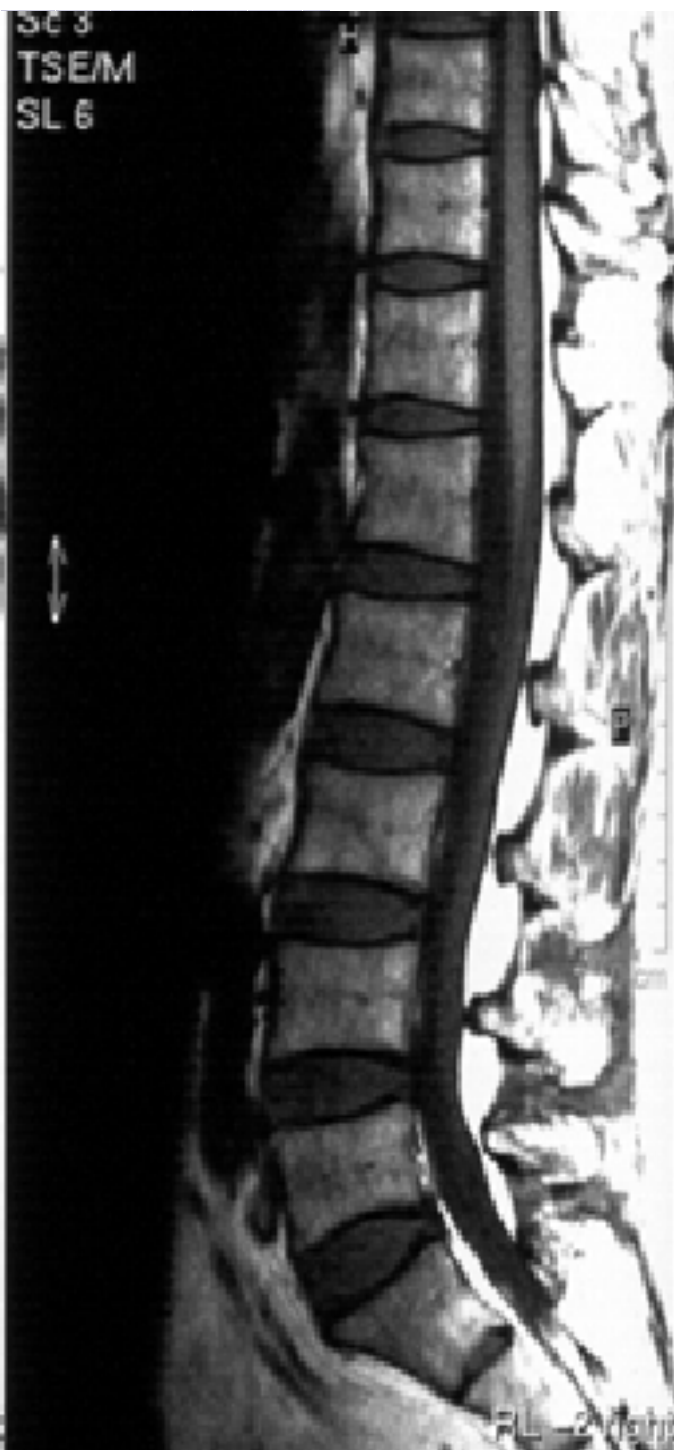
图 7—9 腰椎矢状面磁共振扫描像

(SE1000 / 28)

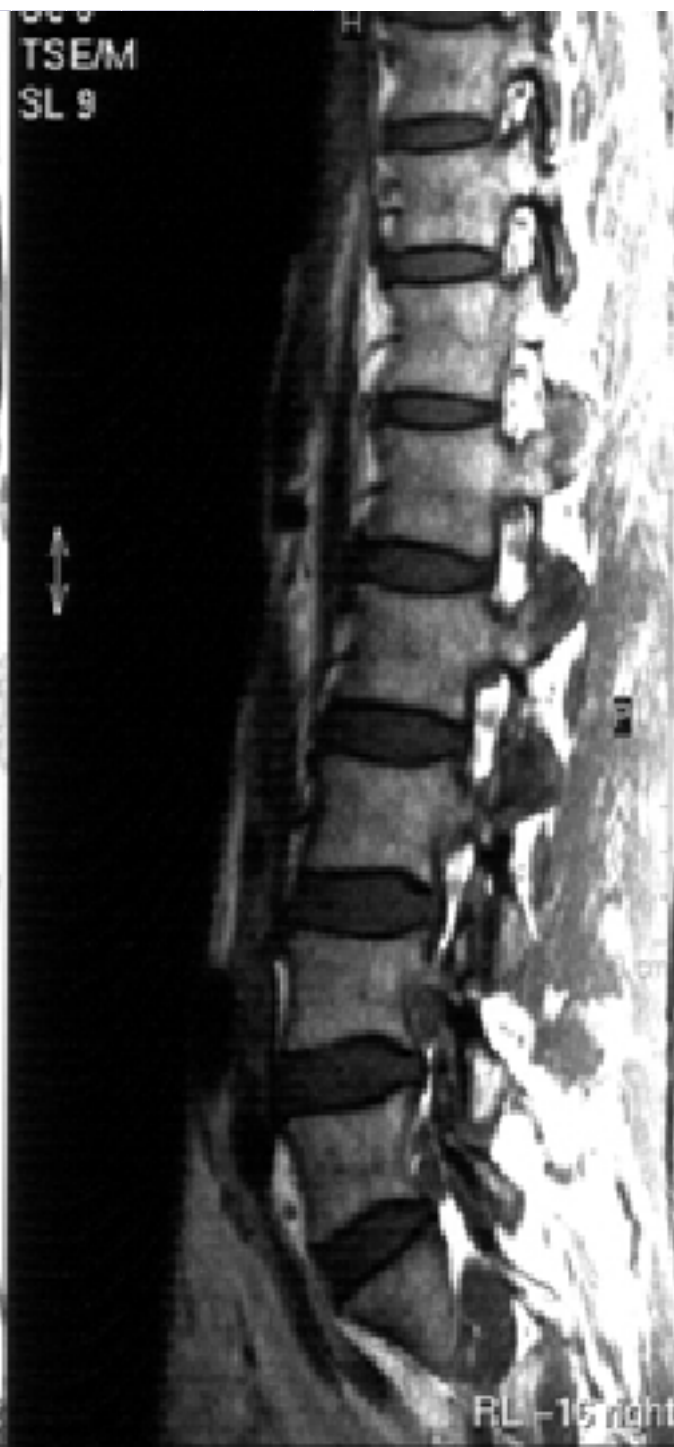
9.下腔静脉 12.关节面 13.椎弓根 14.右髂
总动脉 15.腰静脉 16.棘突

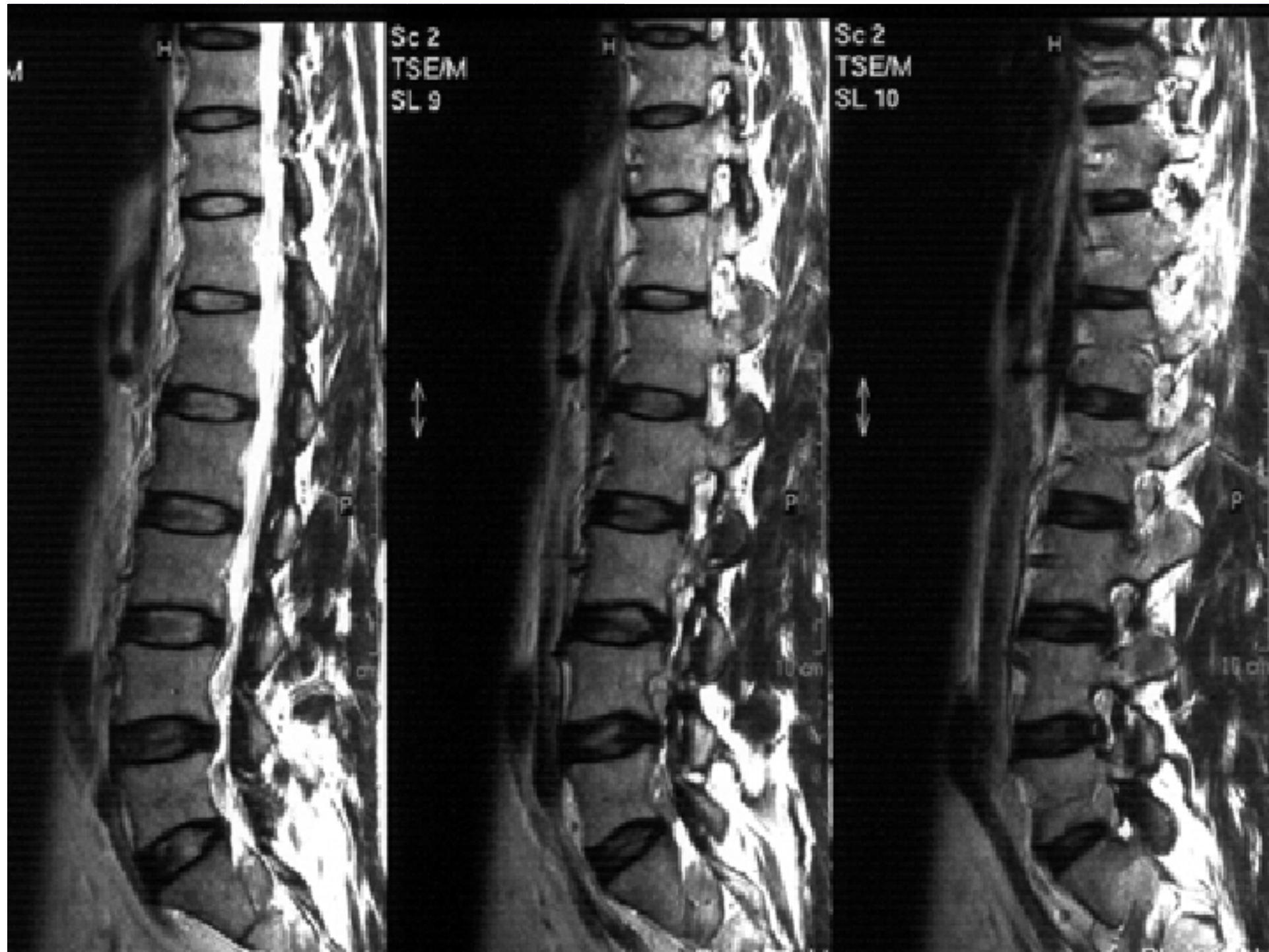










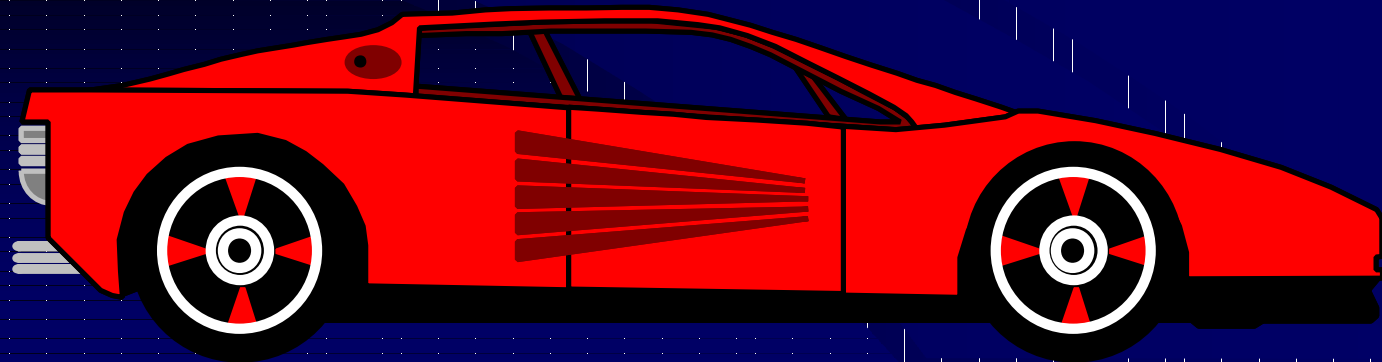


腰部MRI横断面解剖



1腰椎椎体平面:

- 腰椎椎体、椎弓根、椎板、棘突、关节突、后纵韧带、硬膜囊、外侧隐窝内脊神经、硬膜外脂肪、黄韧带



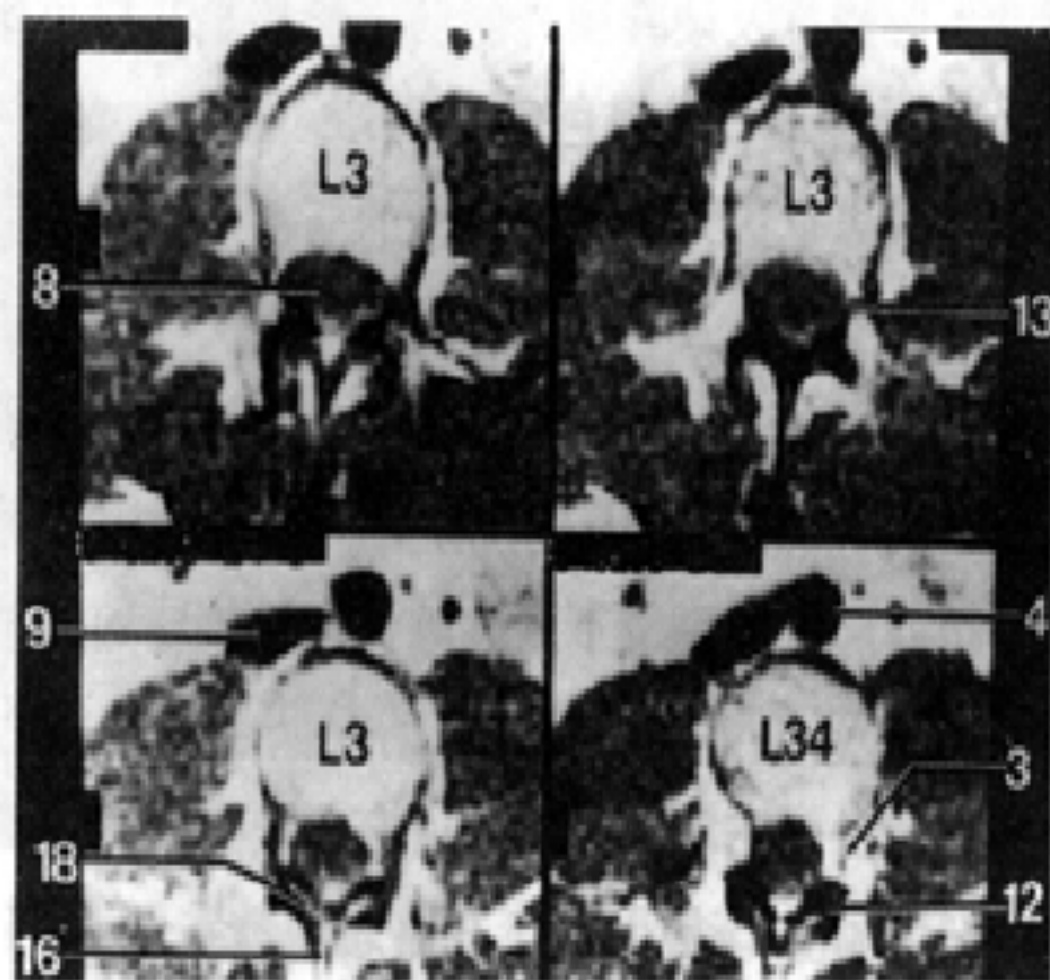
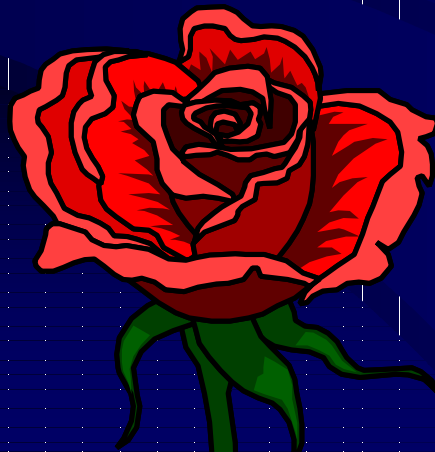


图 7-10 腰椎横断面磁共振扫描像 (SE1000 / 28)

8.硬脊膜囊 9.下腔静脉 13.椎弓根 18.椎弓板 16.棘突 4.主动脉 3.椎间孔内的神经根 12.关节面

2腰椎椎间盘平面:

- 腰椎椎间盘、后纵韧带、硬膜囊、外侧隐窝内脊神经、椎间孔内脊神经、硬膜外脂肪、黄韧带、椎板、棘突、关节突



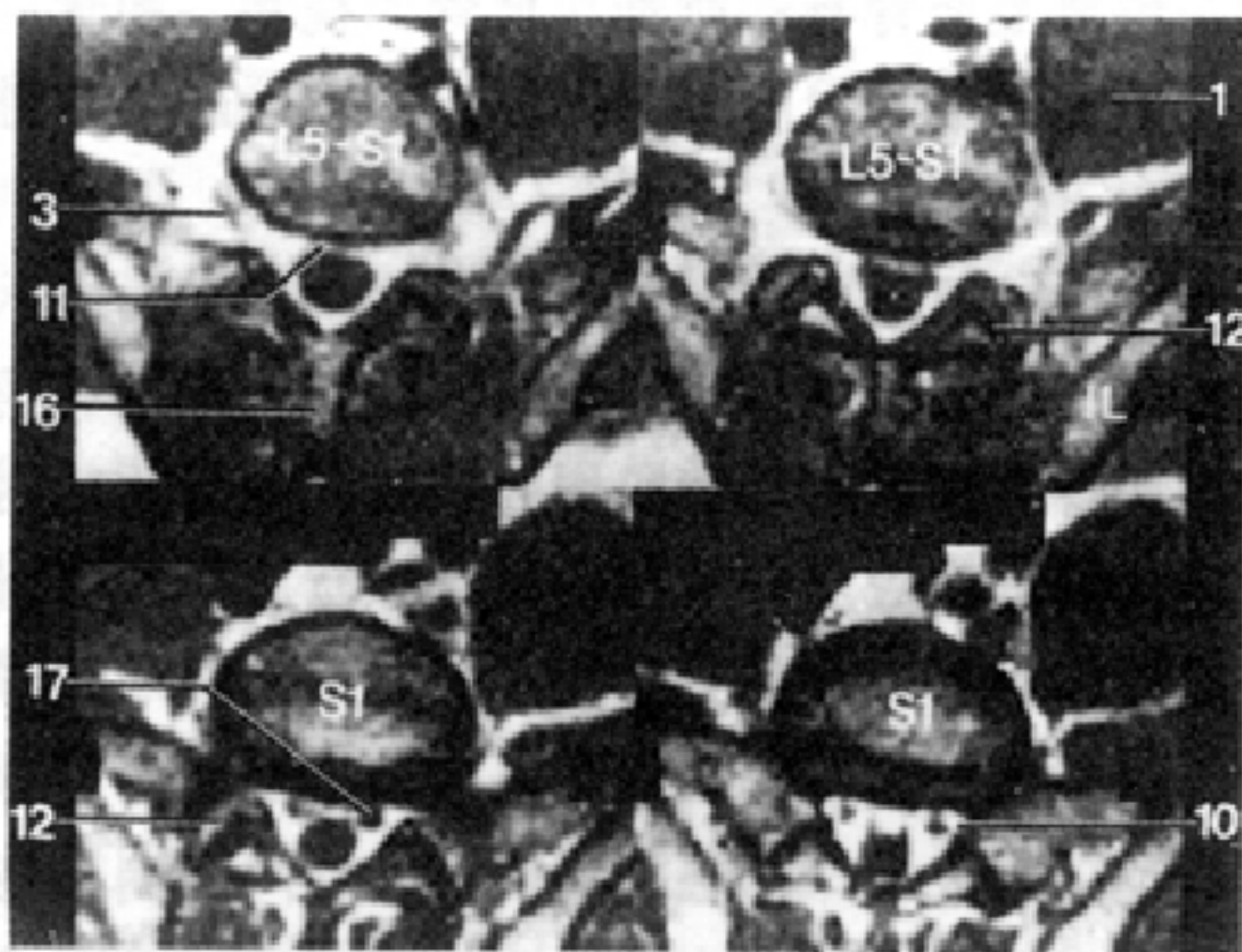
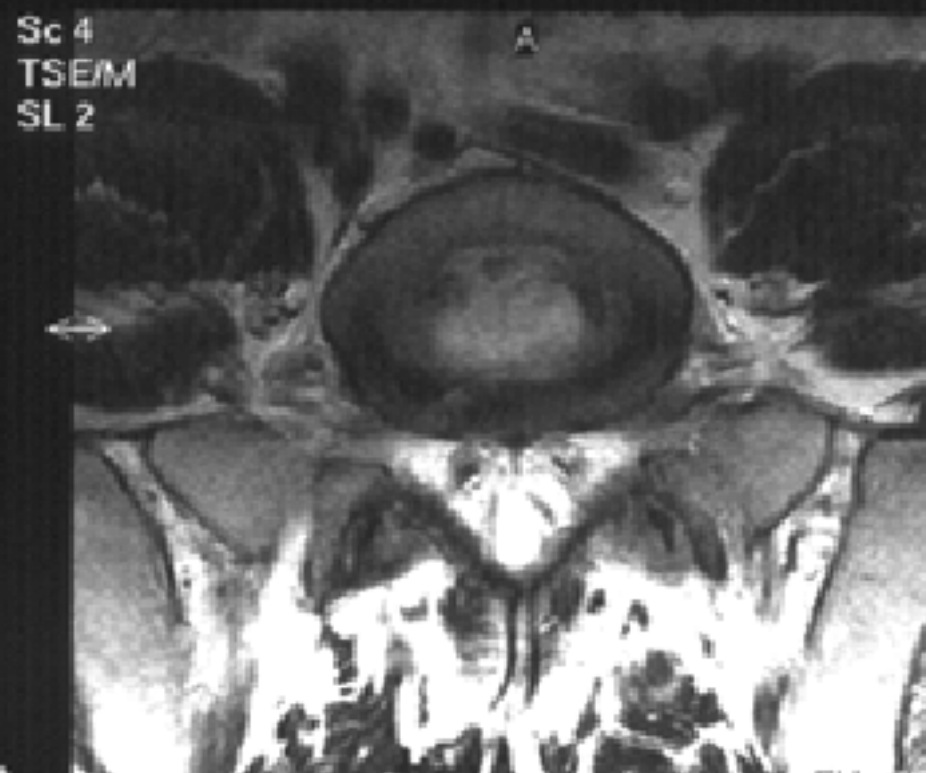
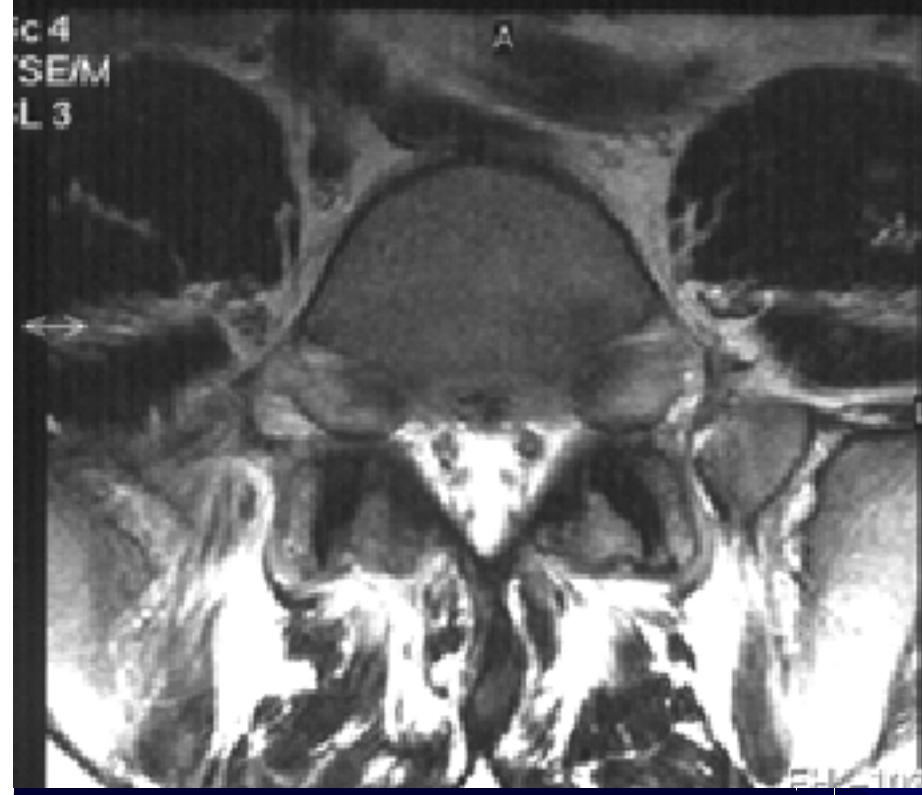


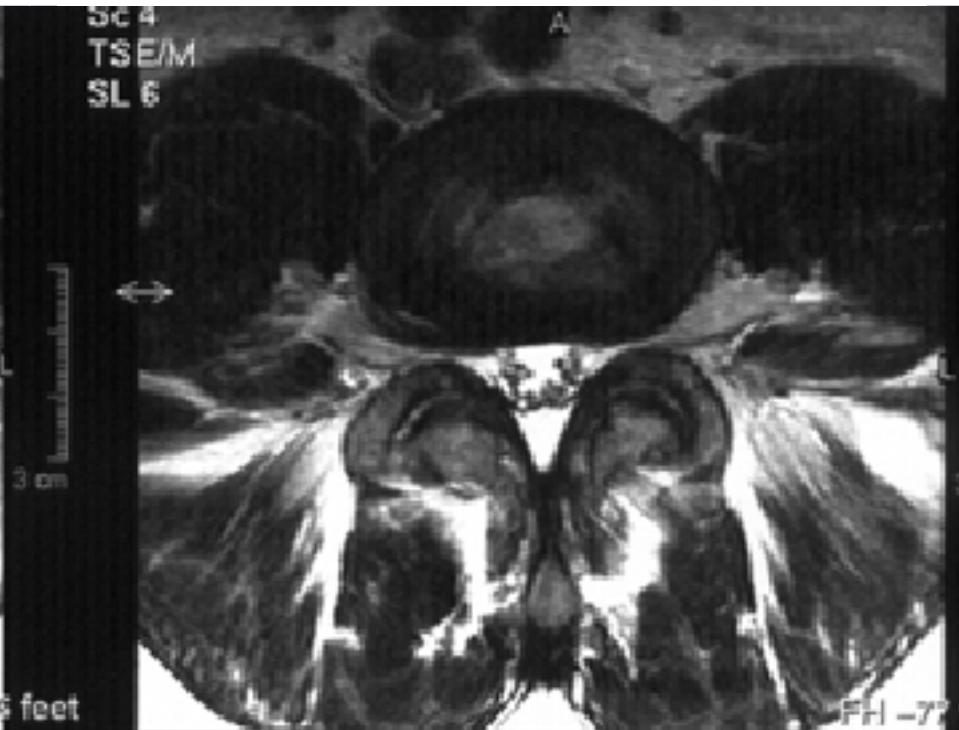
图 7-11 腰椎横断面磁共振扫描像 (SE1000 / 28)

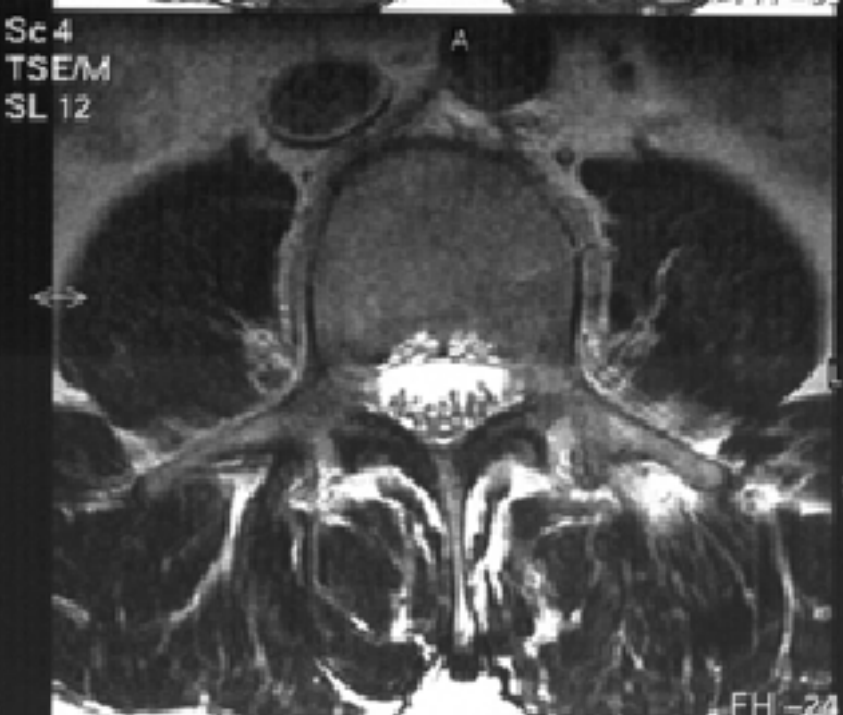
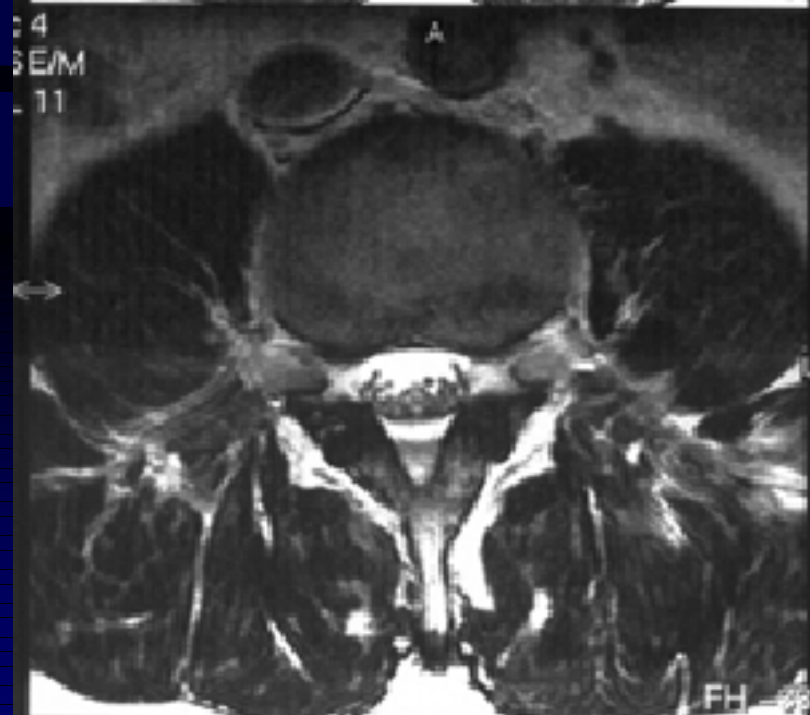
- 3.椎间孔内的神经根 11.硬膜外的脂肪 16.棘突 1.腰大肌 12.关节面
17.椎管内的神经根 10.外侧隐窝

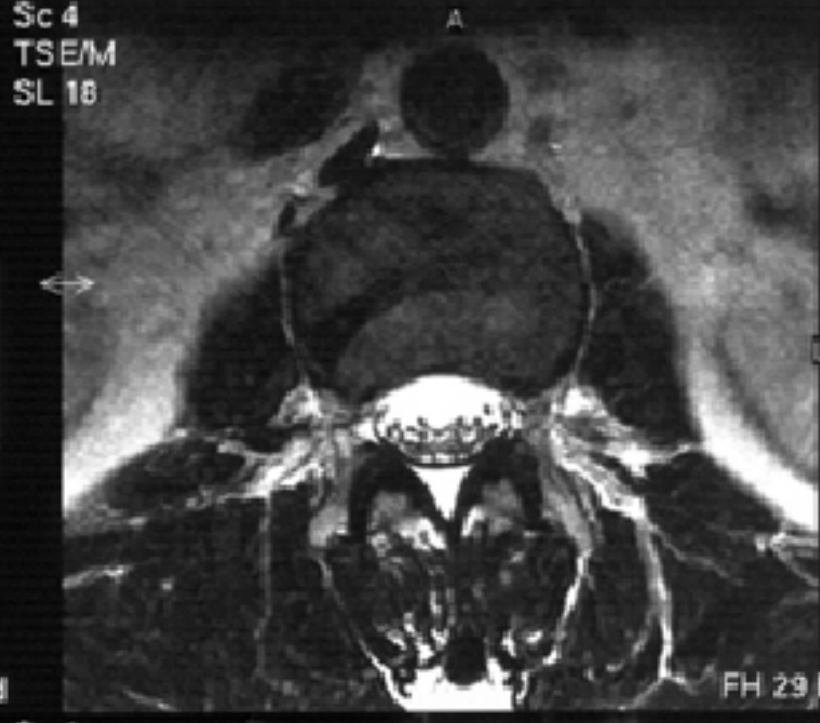
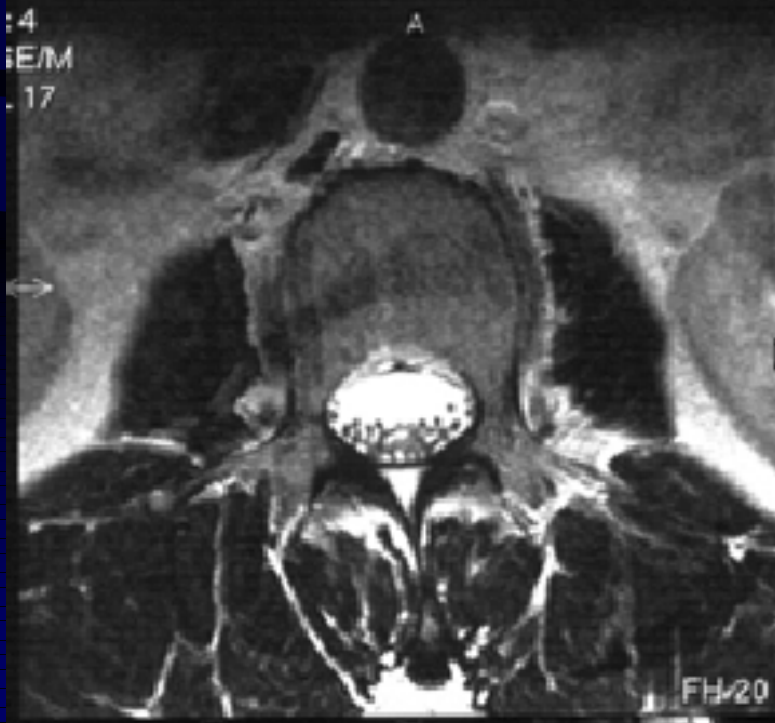
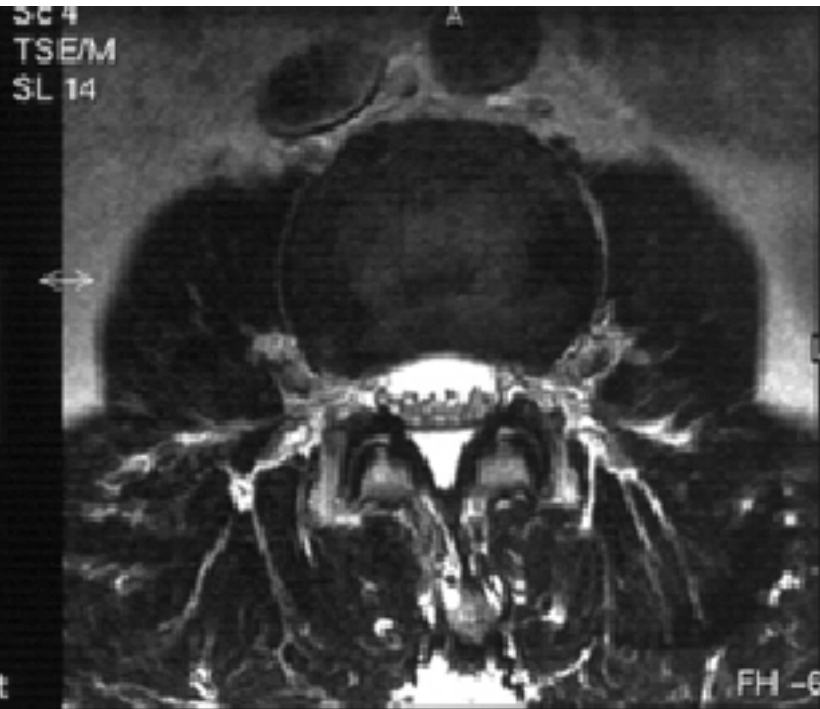
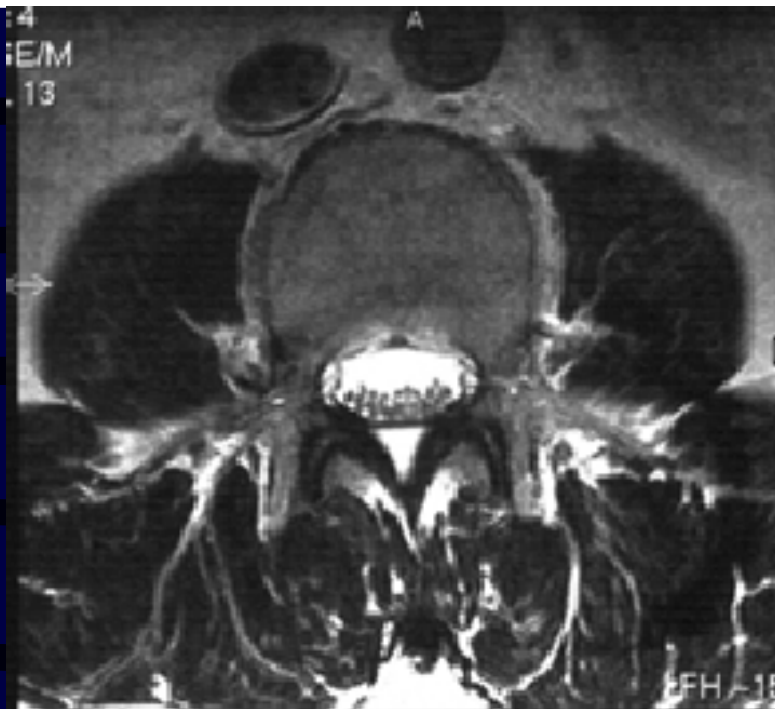


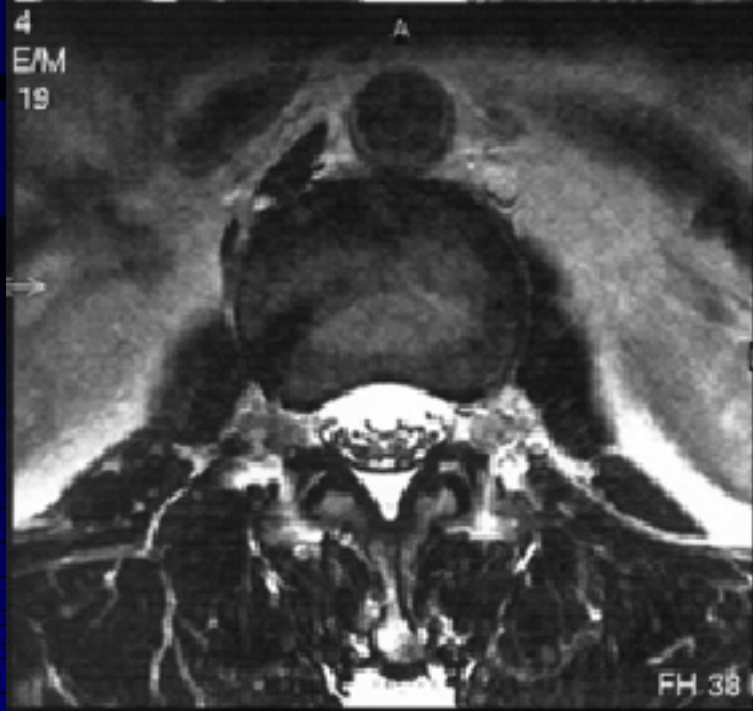
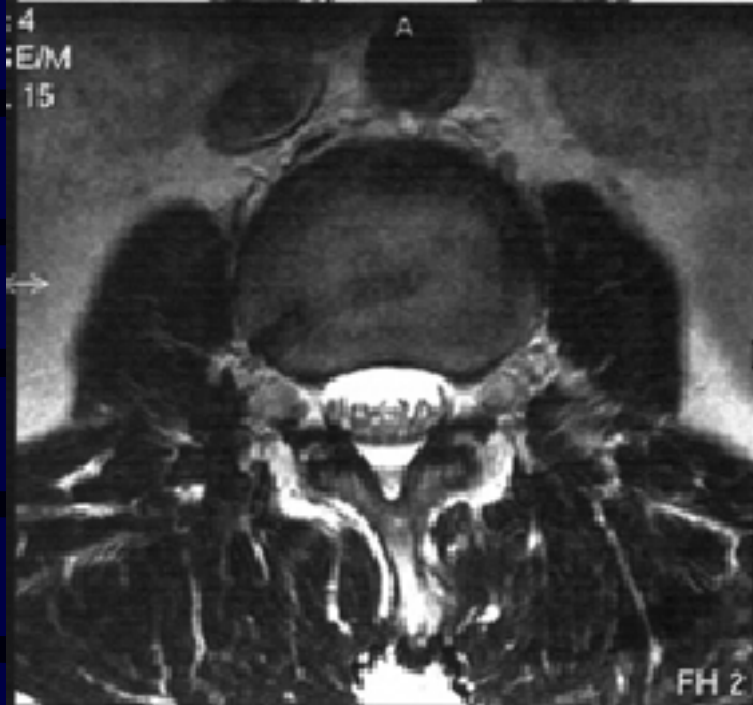
3 cm











谢 谢

