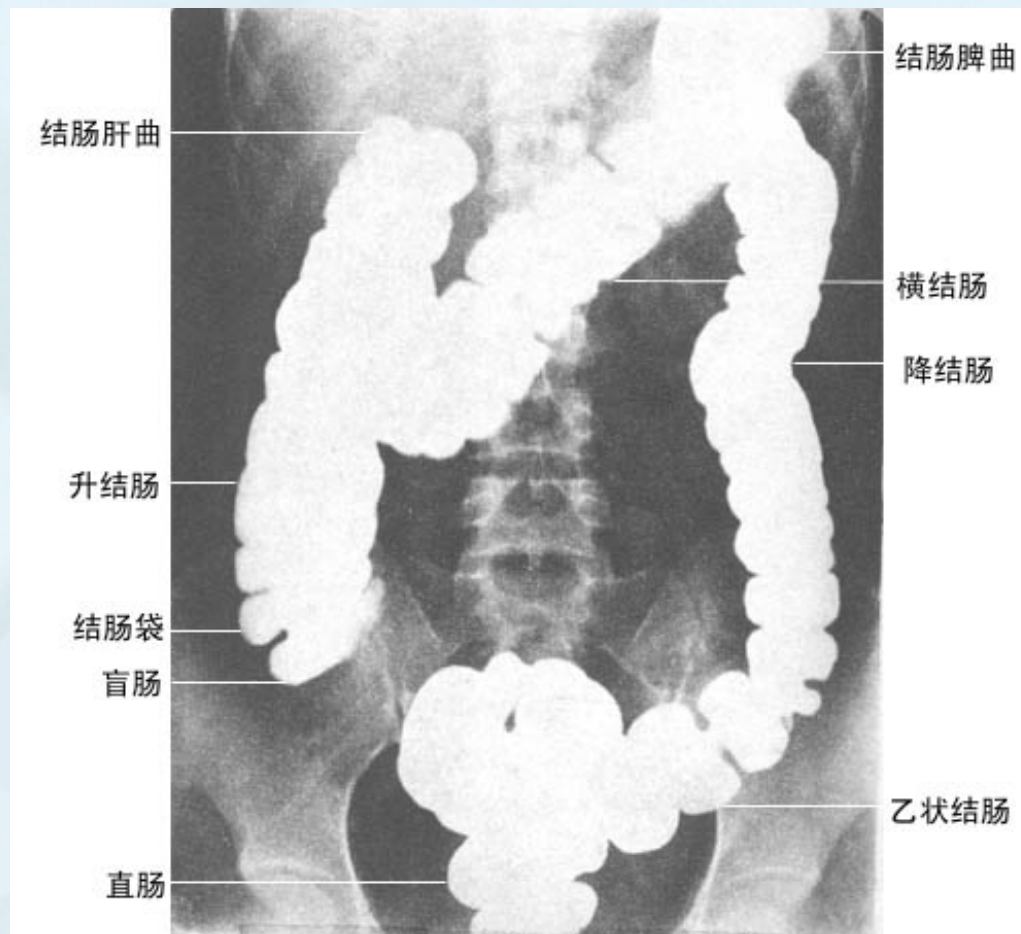


# 正常X线解剖



# 钡灌肠

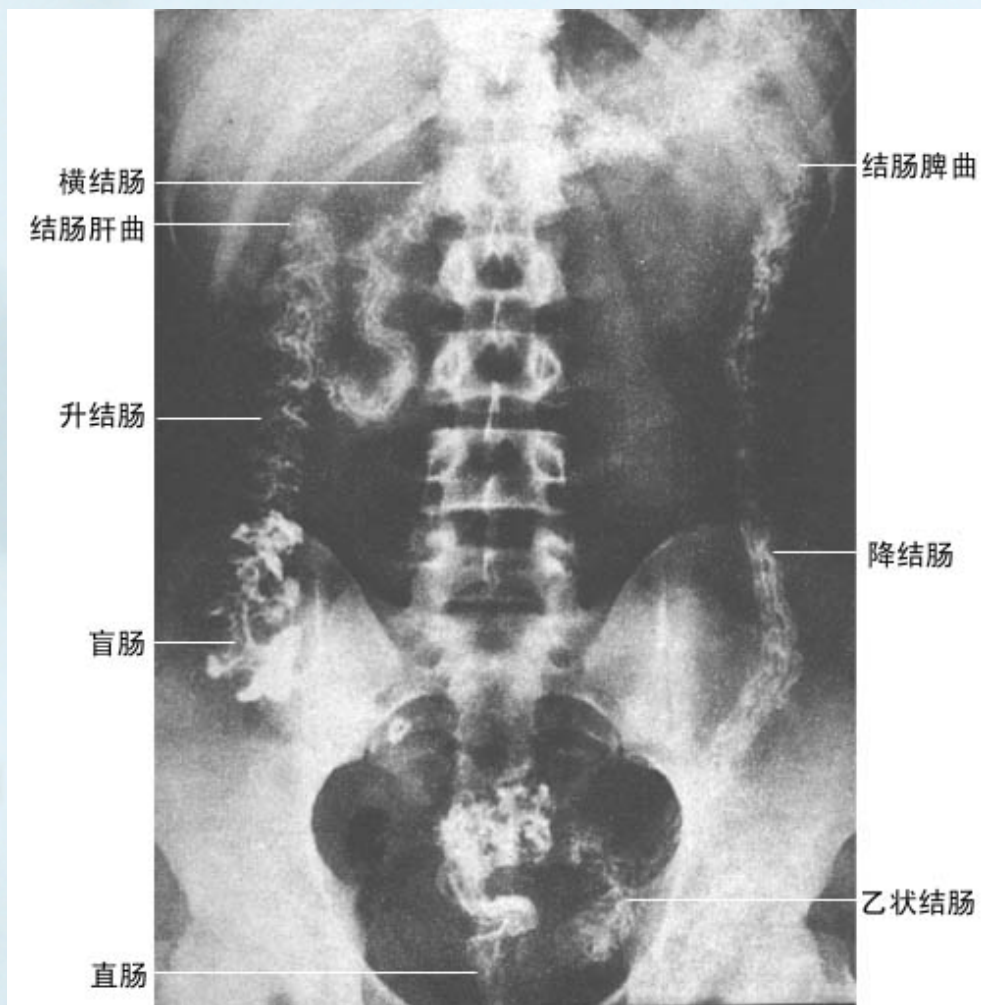


充盈相



# 钡灌肠1

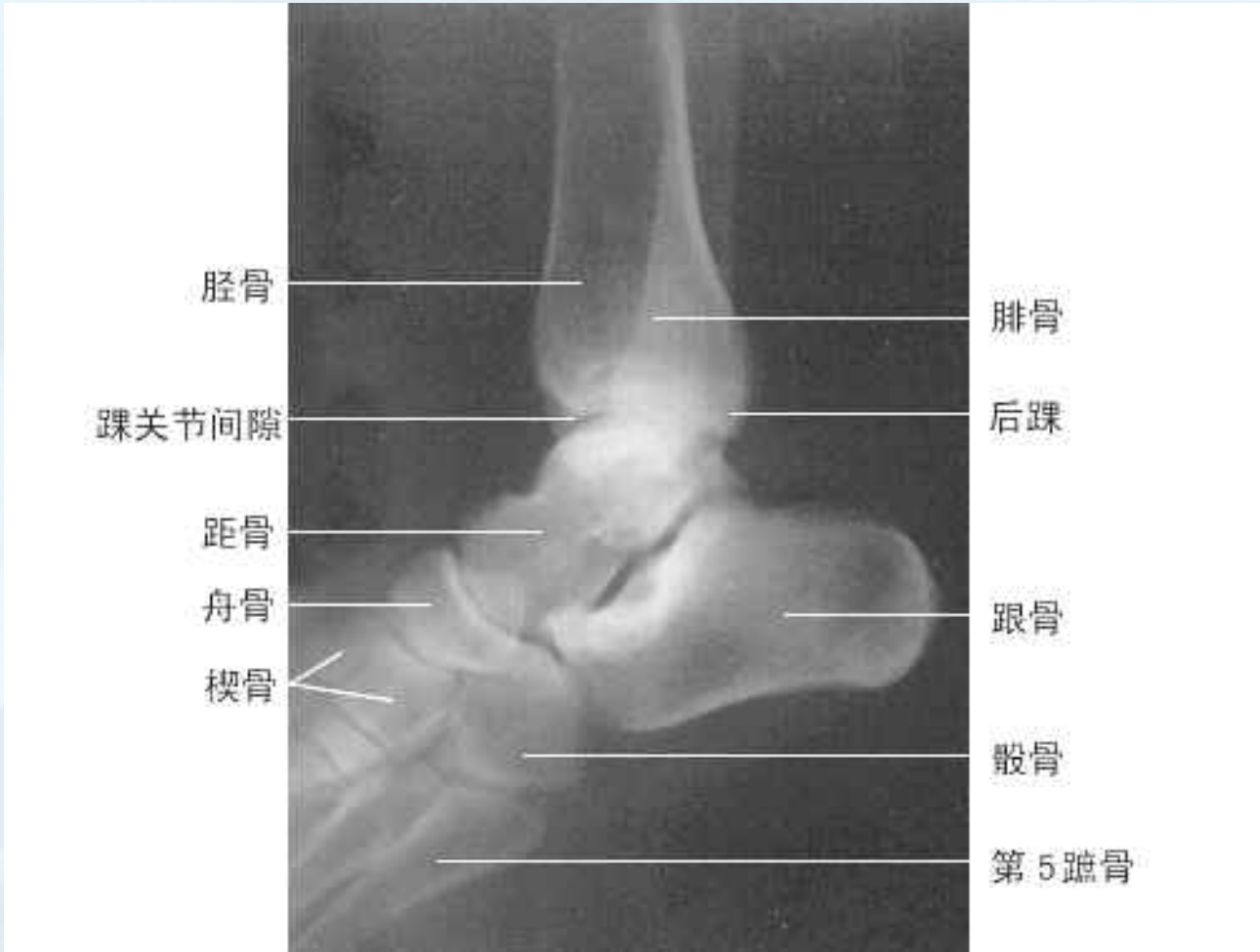
粘膜相



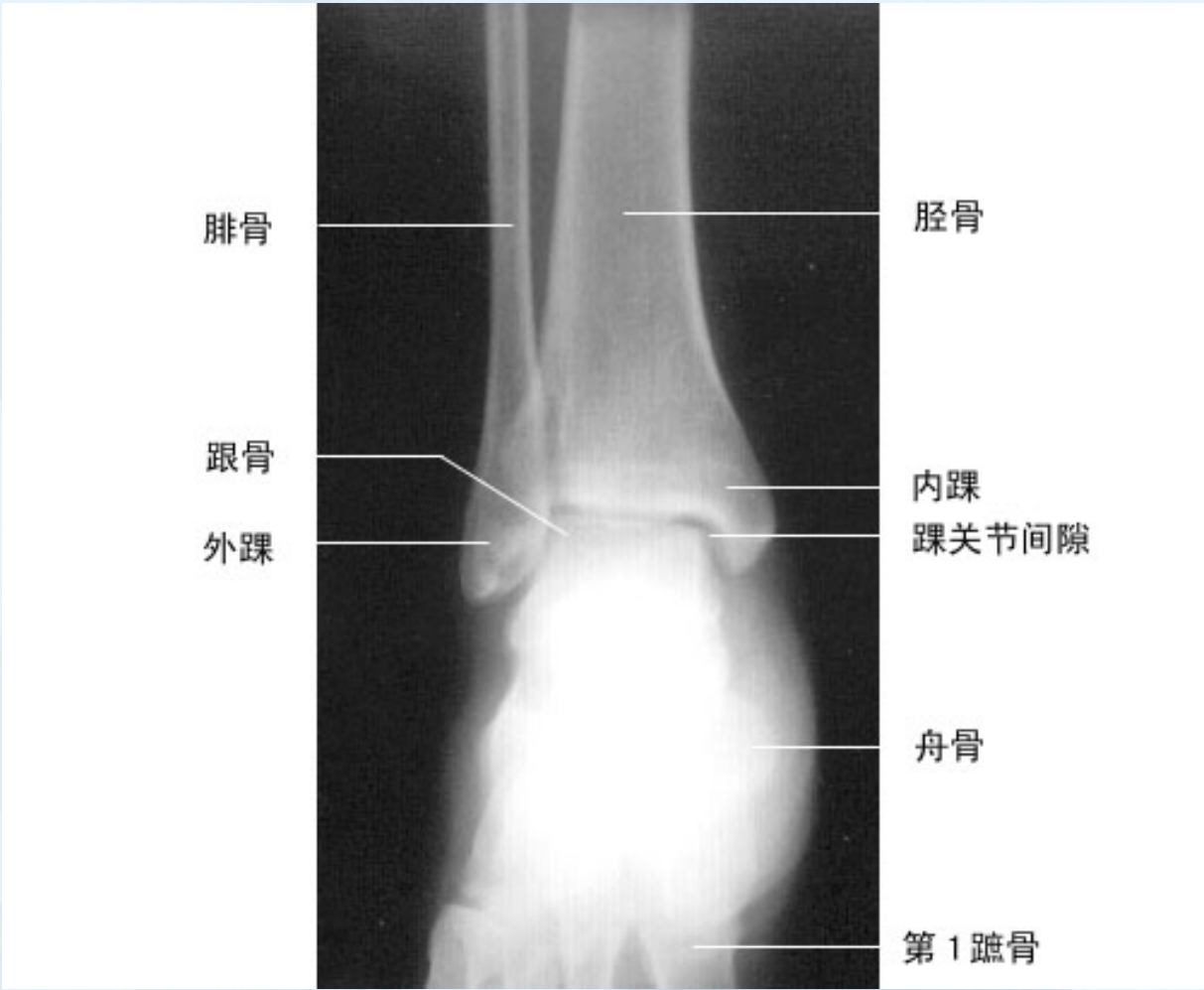
# 腹部平片 (KUB)



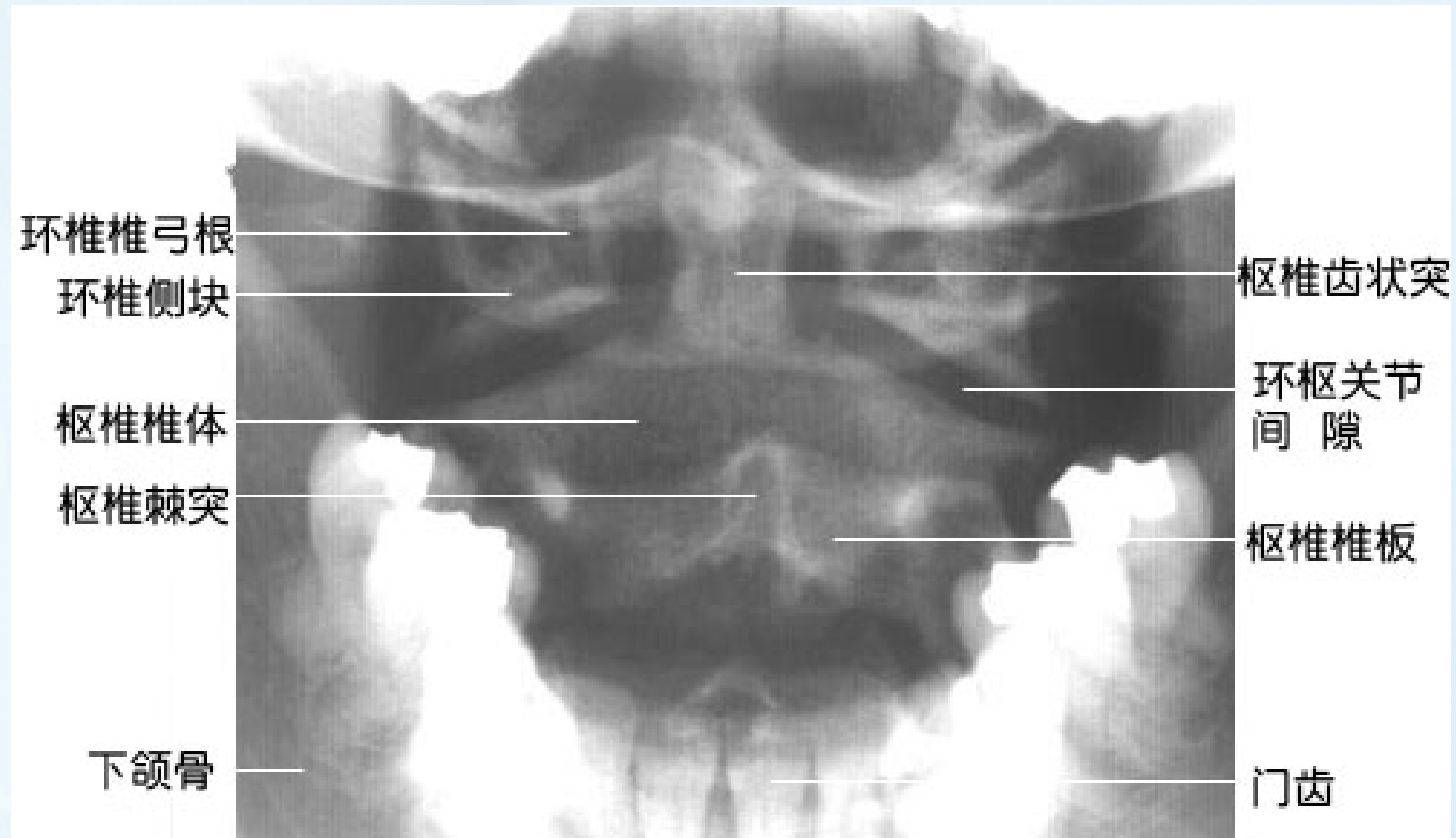
# 踝关节侧位



# 踝关节正位



# 环枢椎张口前后位



# 肩关节前后位平片





# 颈椎侧位



# 颈椎前后位



# 颈椎斜位

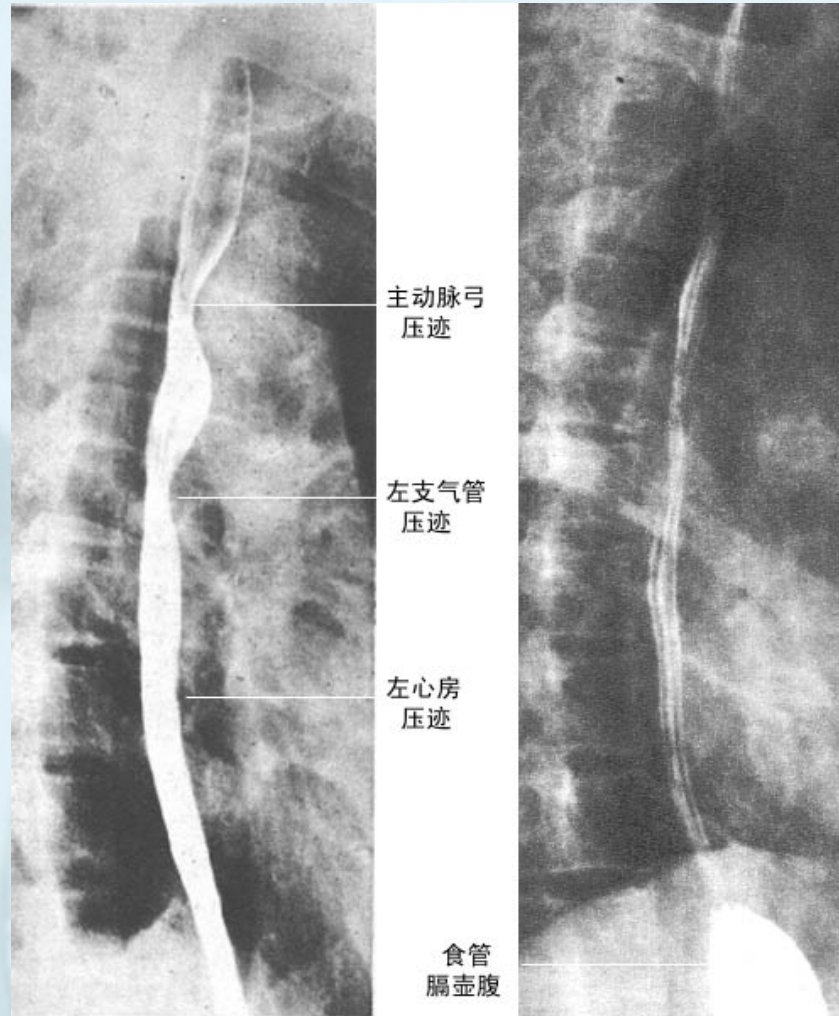


# 静脉肾盂造影 (IVP)

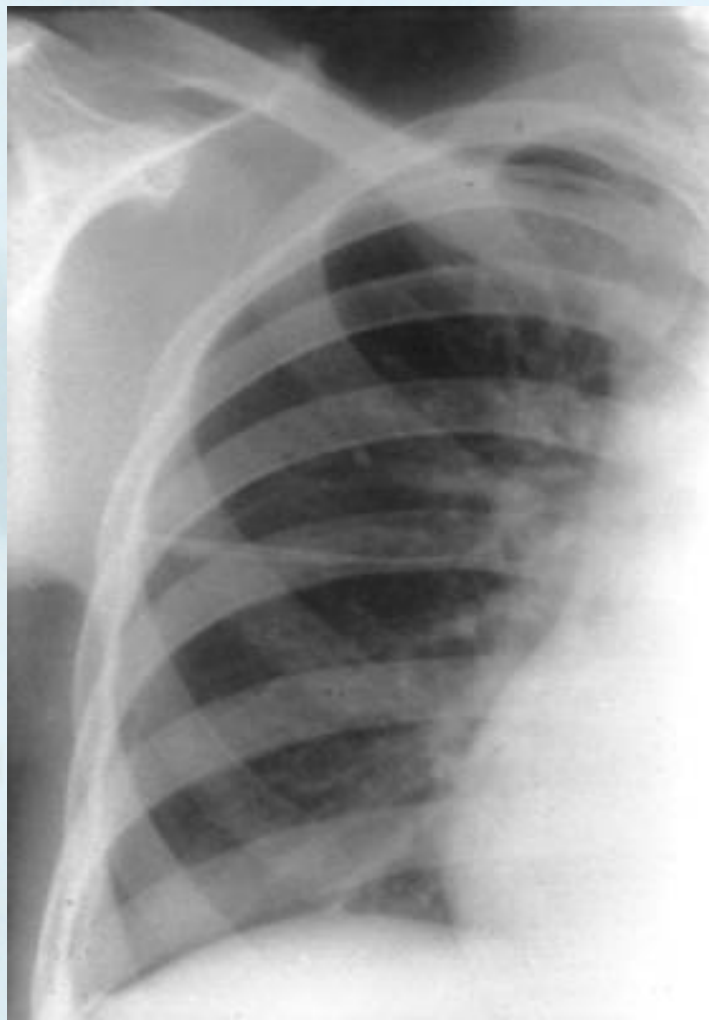


# 食管钡餐造影

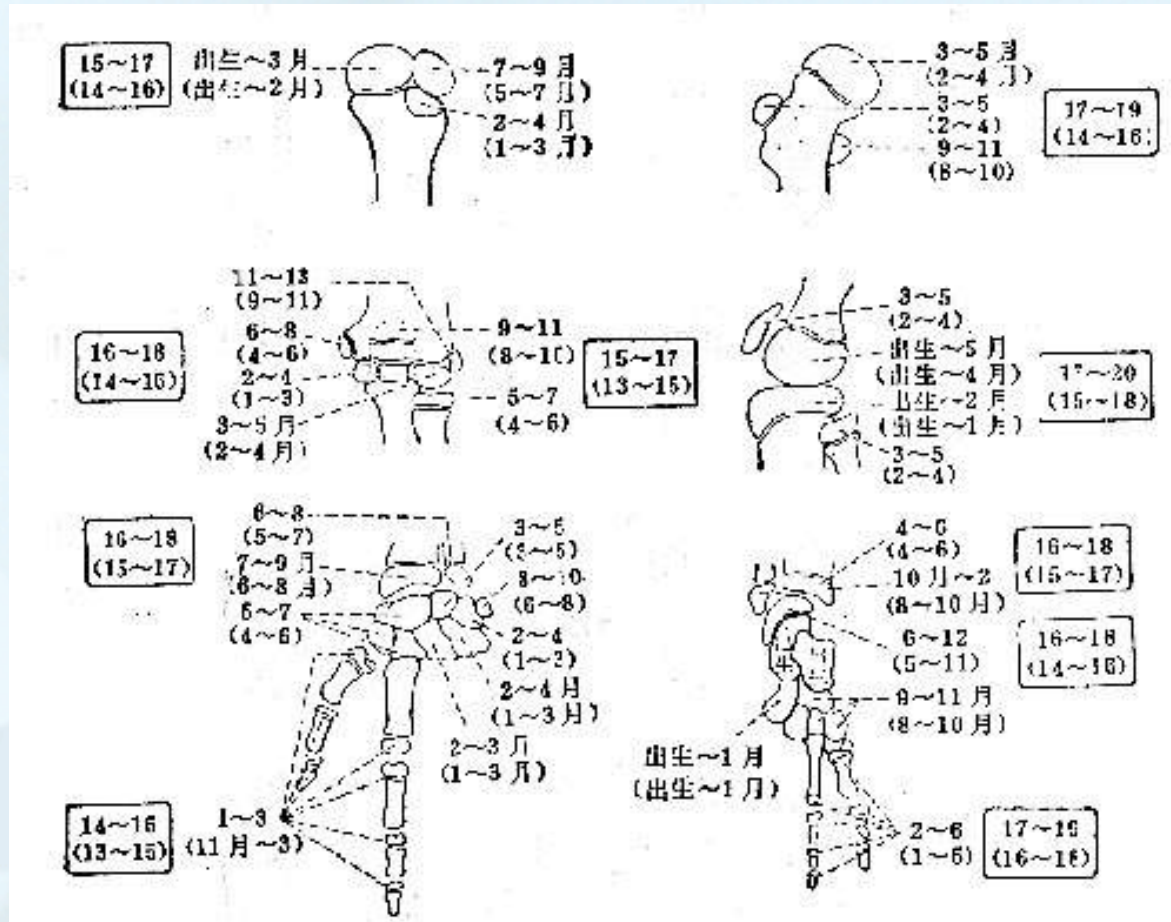
左图为充盈相，  
右图为粘膜相。



# 水平裂投影



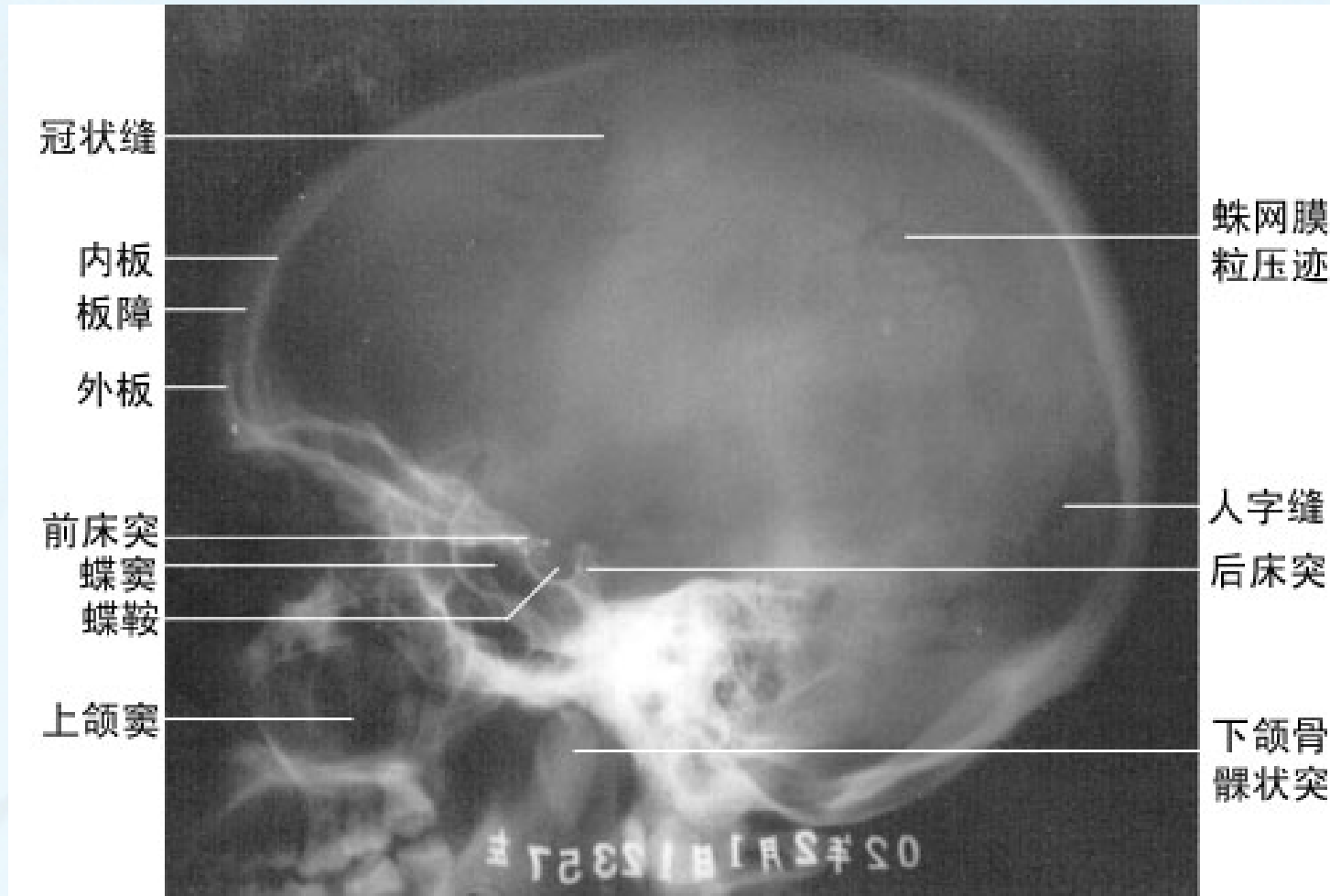
# 四肢骨龄标准



方格外数为骨骺最早到最迟年龄之正常范围，格内数字为骨骺间及干骺间完全联合年龄之正常范围，括号内数字为女性材料。

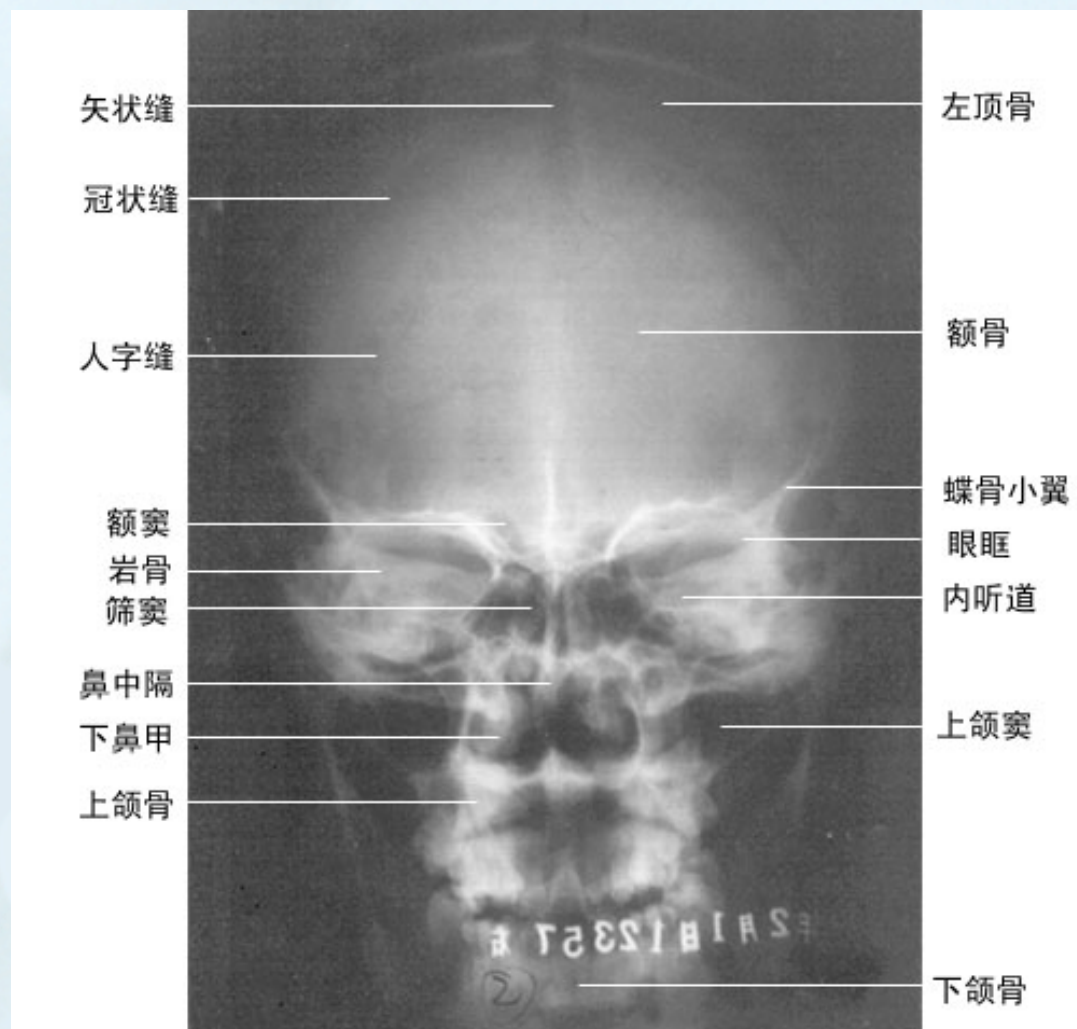


# 头颅侧位片平

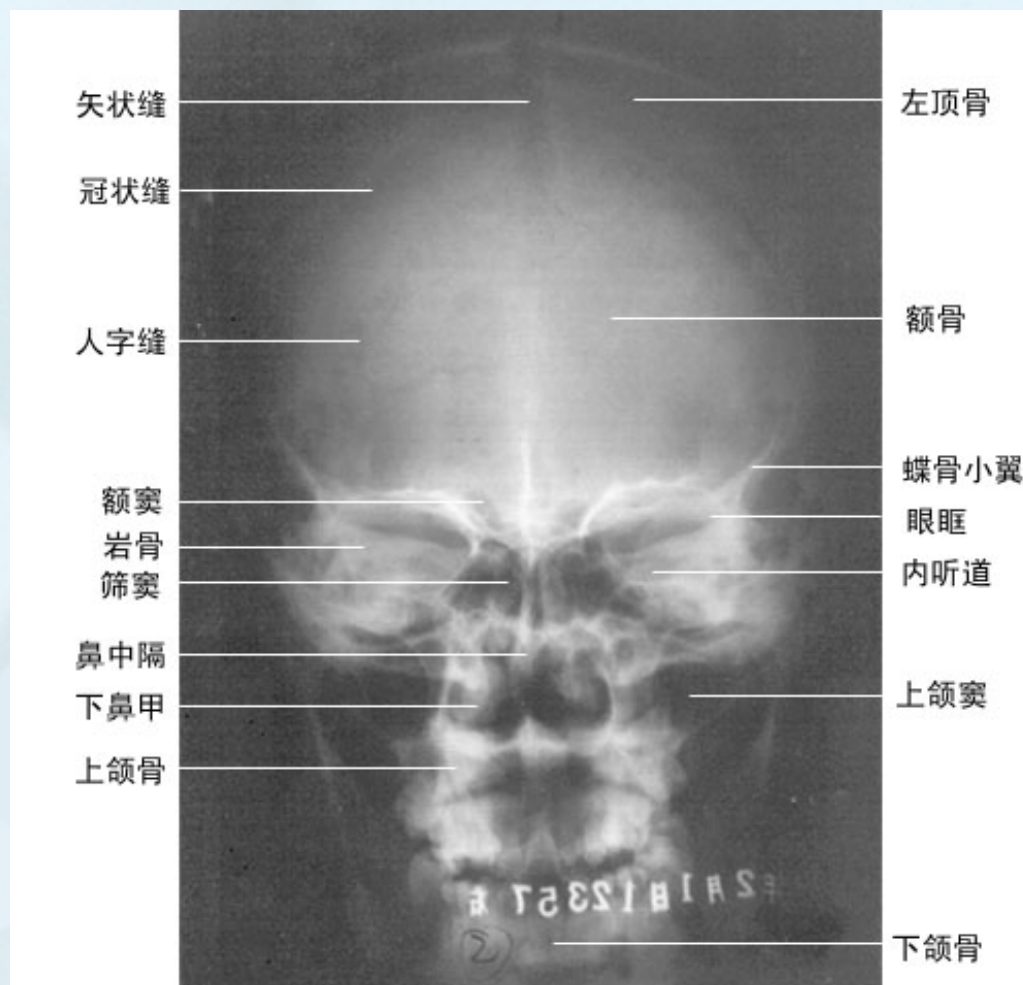




# 头颅后前位



# 头颅后前位平片



# 腕关节侧位 平片

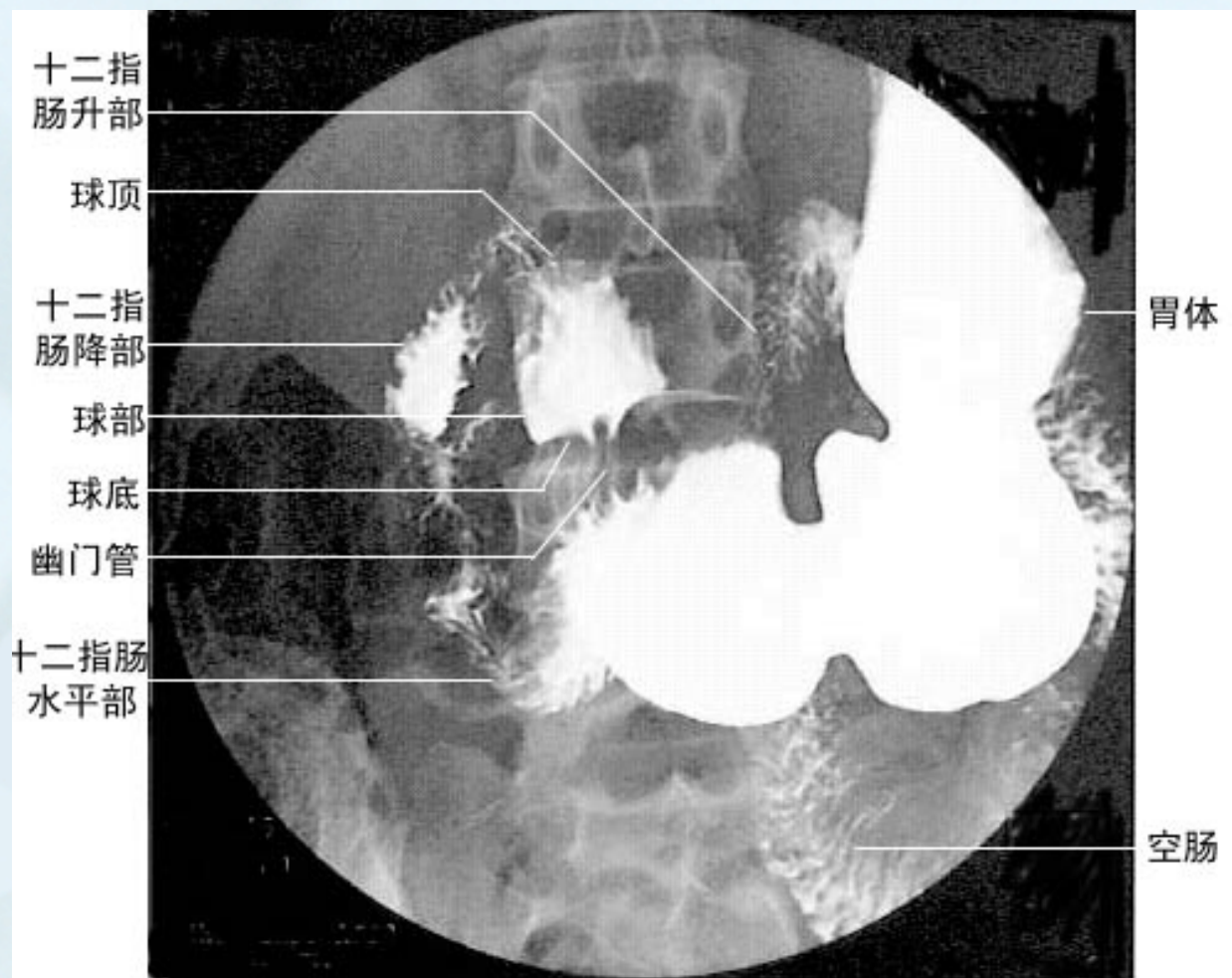


# 腕关节正位平片



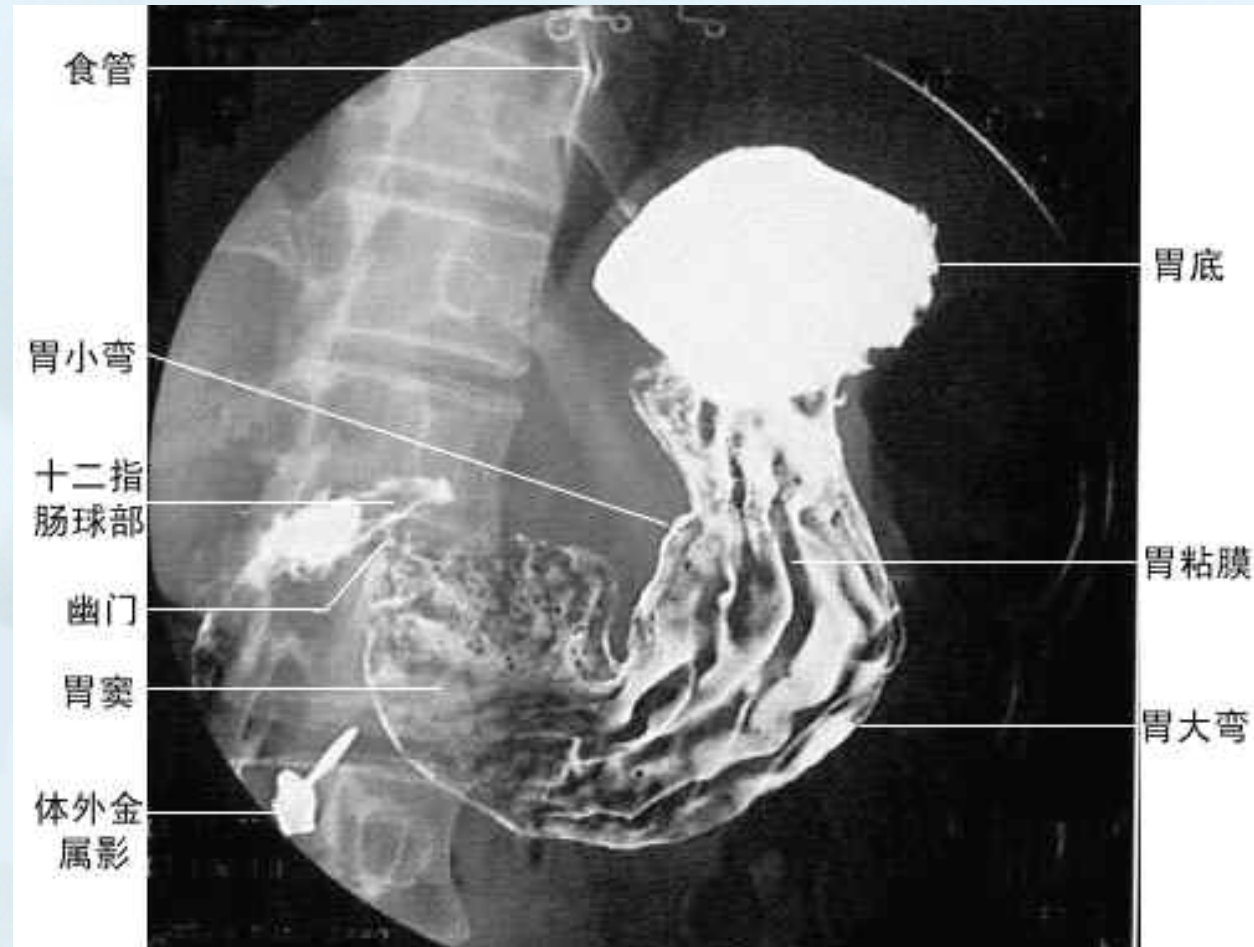
# 胃十二指肠钡餐造影

充盈相

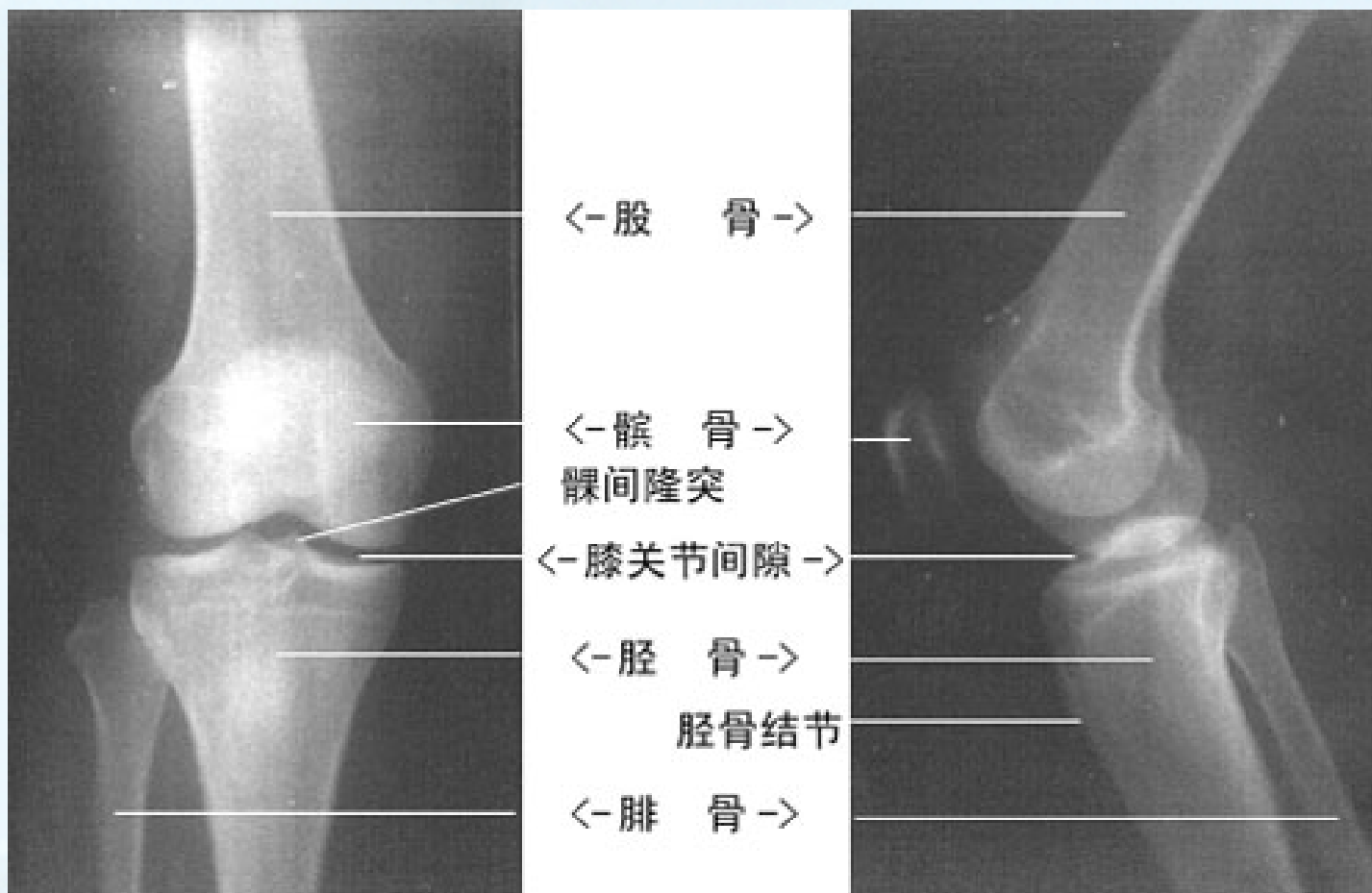


# 胃十二指肠钡餐造影1

粘膜相



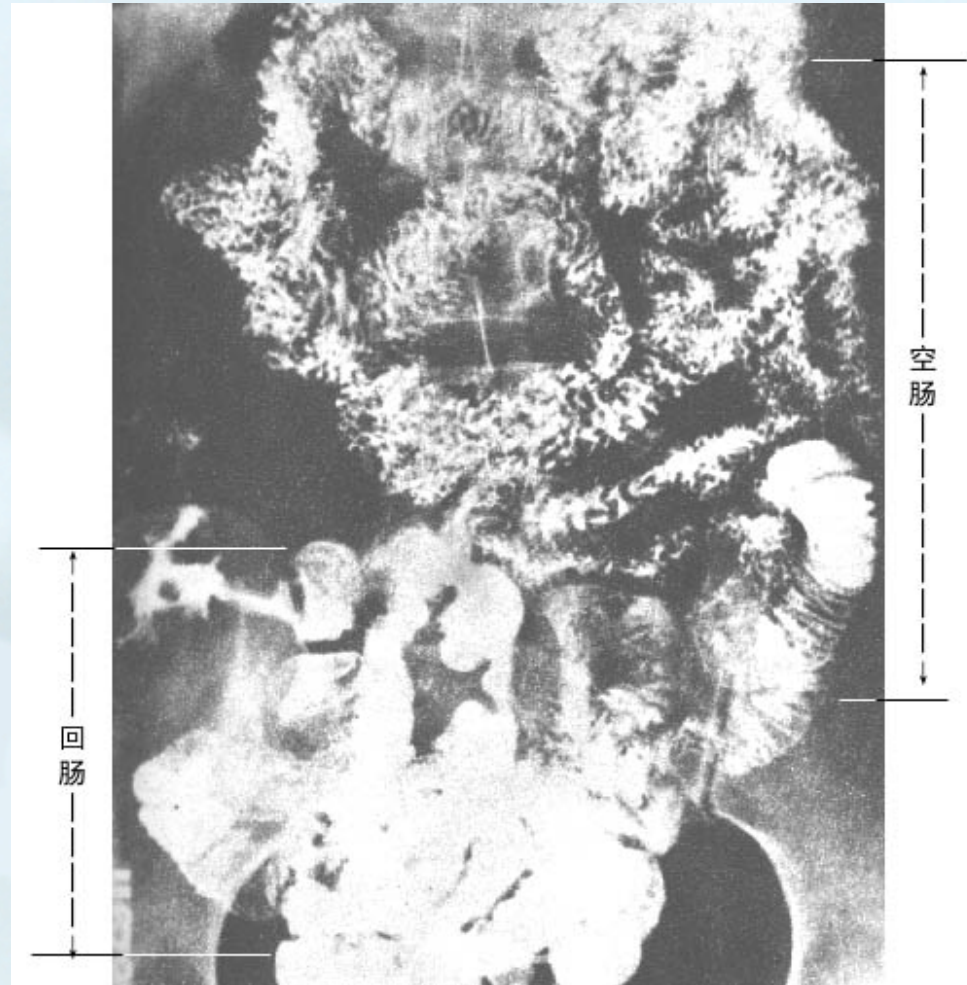
# 膝关节



左图为正位，右图为侧位。

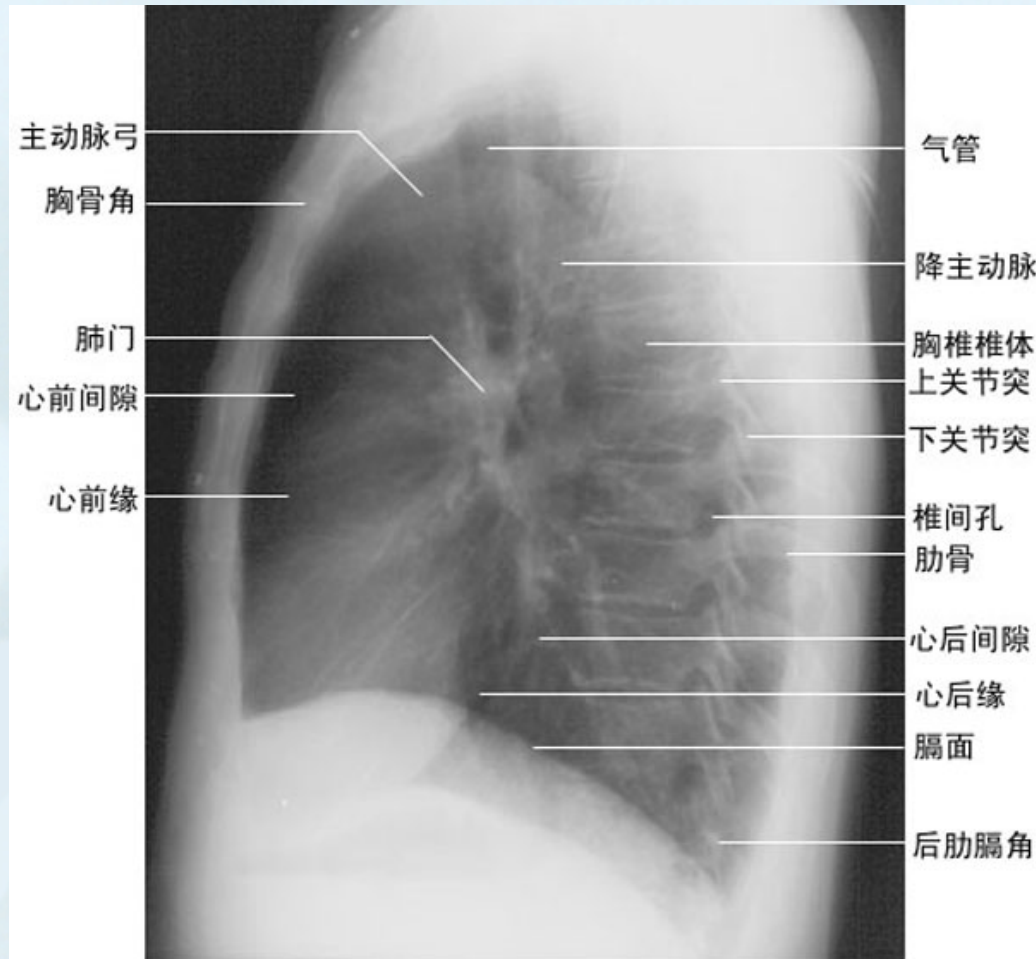


# 小肠钡餐造影

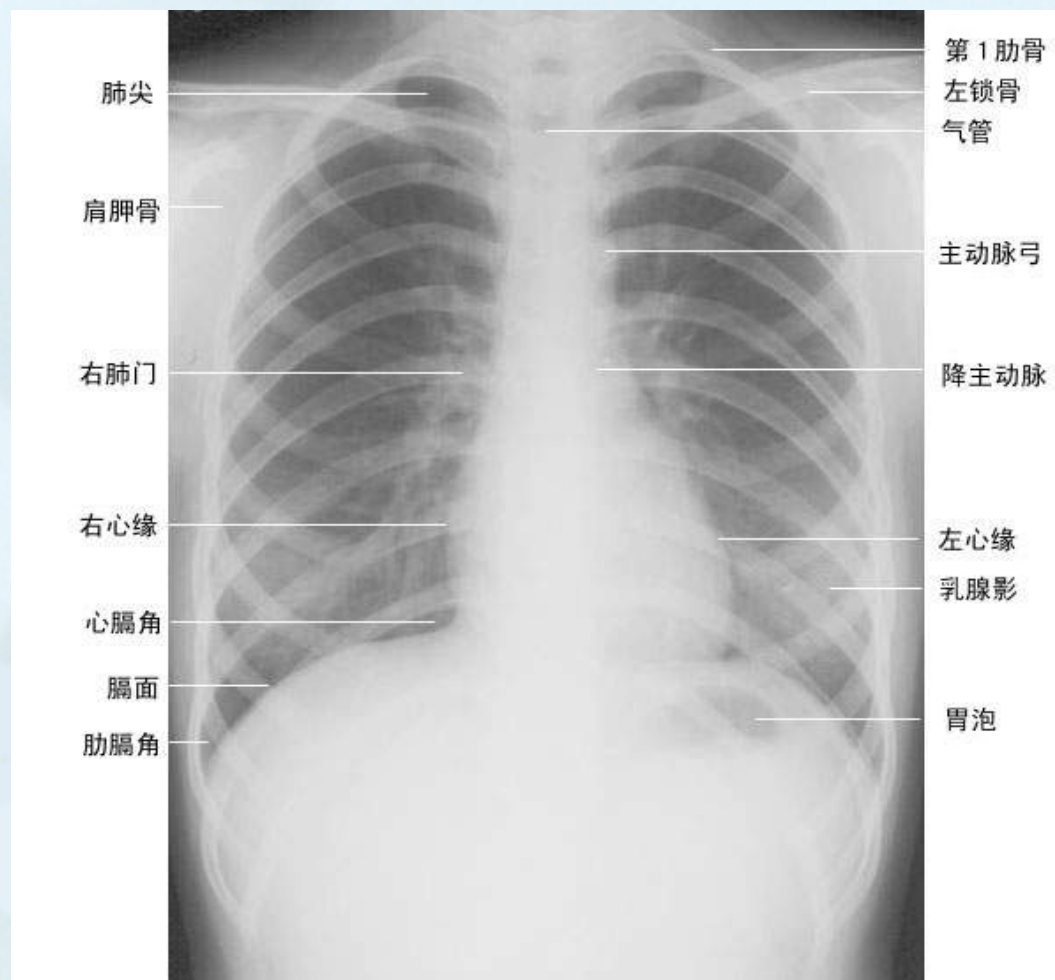




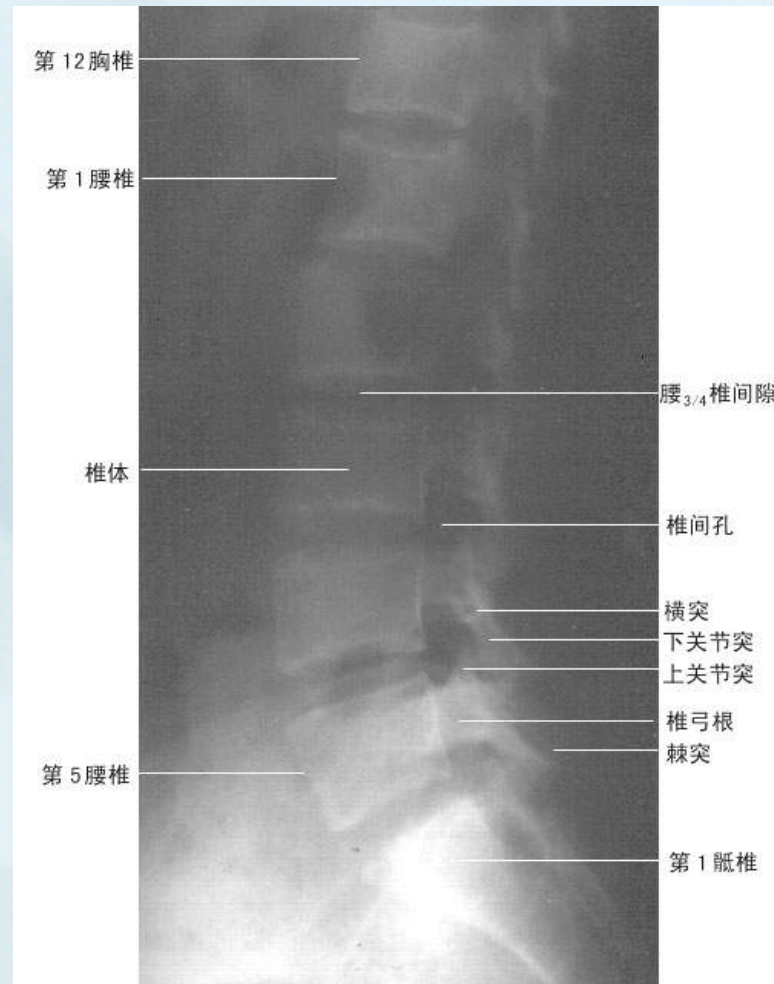
# 胸部侧位平片



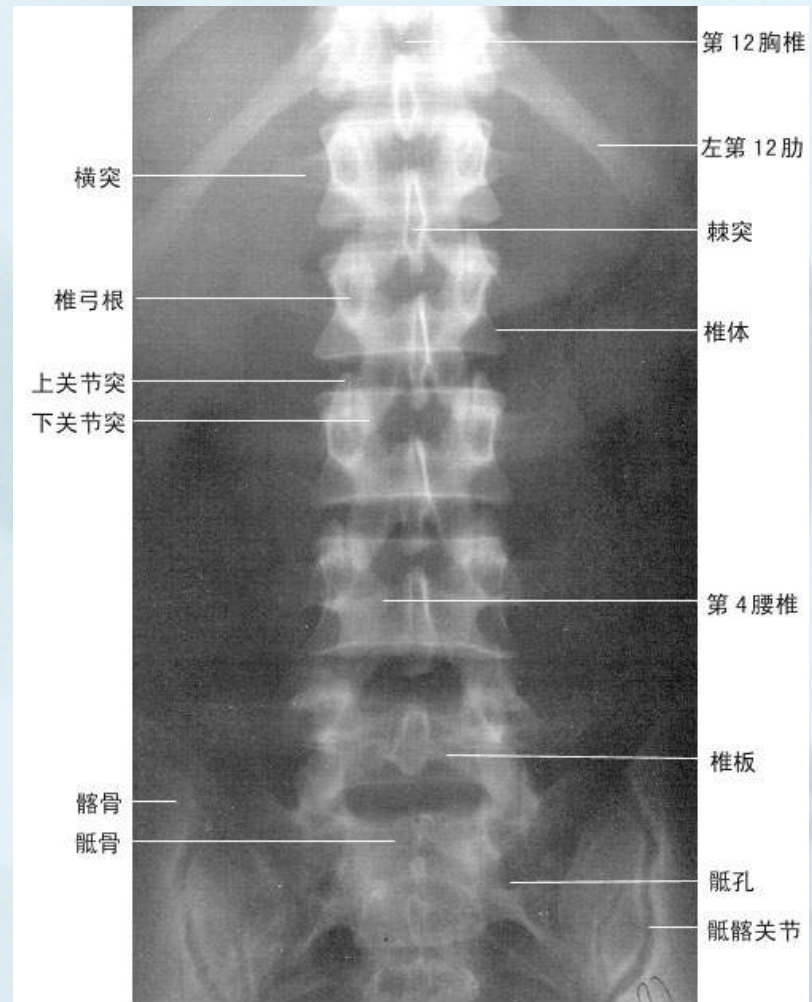
# 胸部后前位平片



# 腰椎侧位



# 腰椎正位



# 正常成年人胸片（侧位）



# 正常成年人胸片（正位）





正常成人表现





正常成人表现



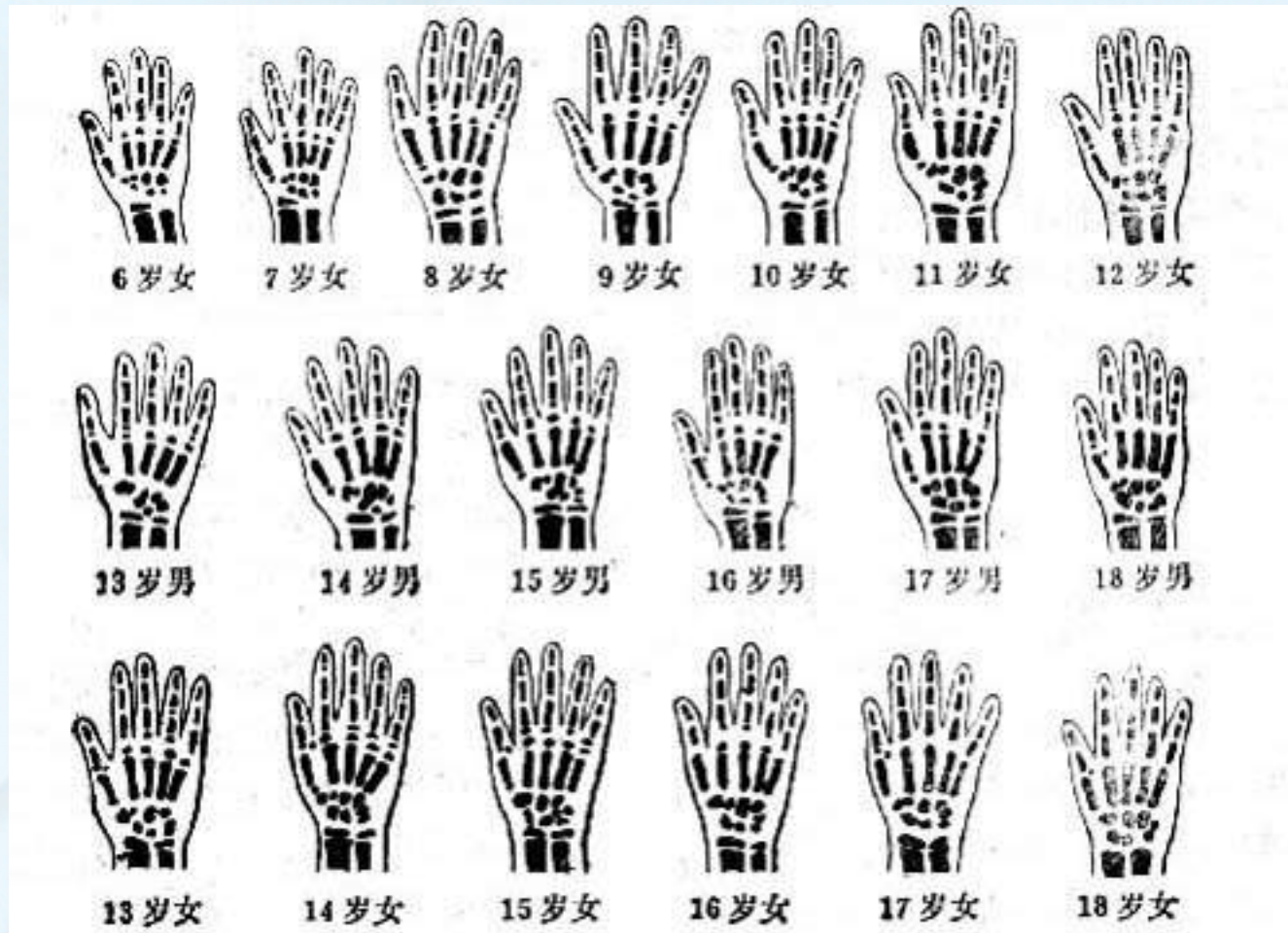


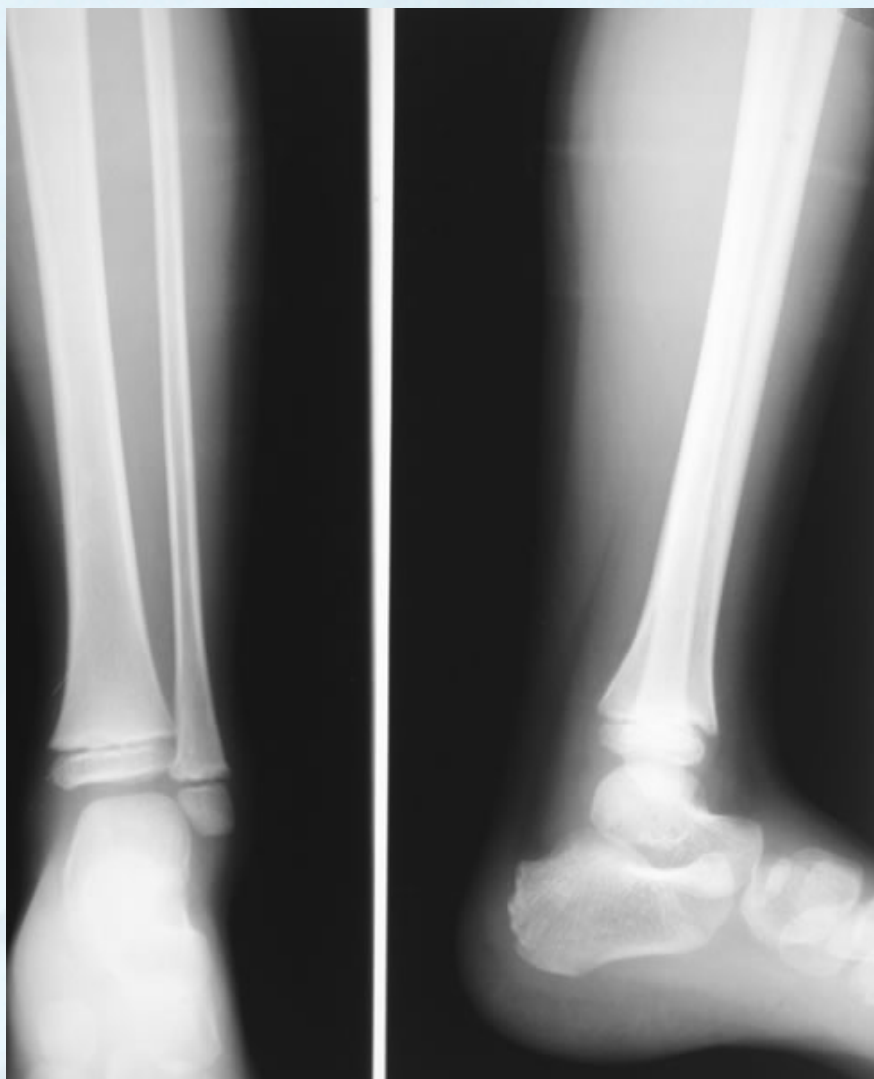


# 正常脊柱、 骨盆骨



# 正常手与腕部骨化时间





正常小儿表现



## 正常小儿表现2



# 正常小儿胸片



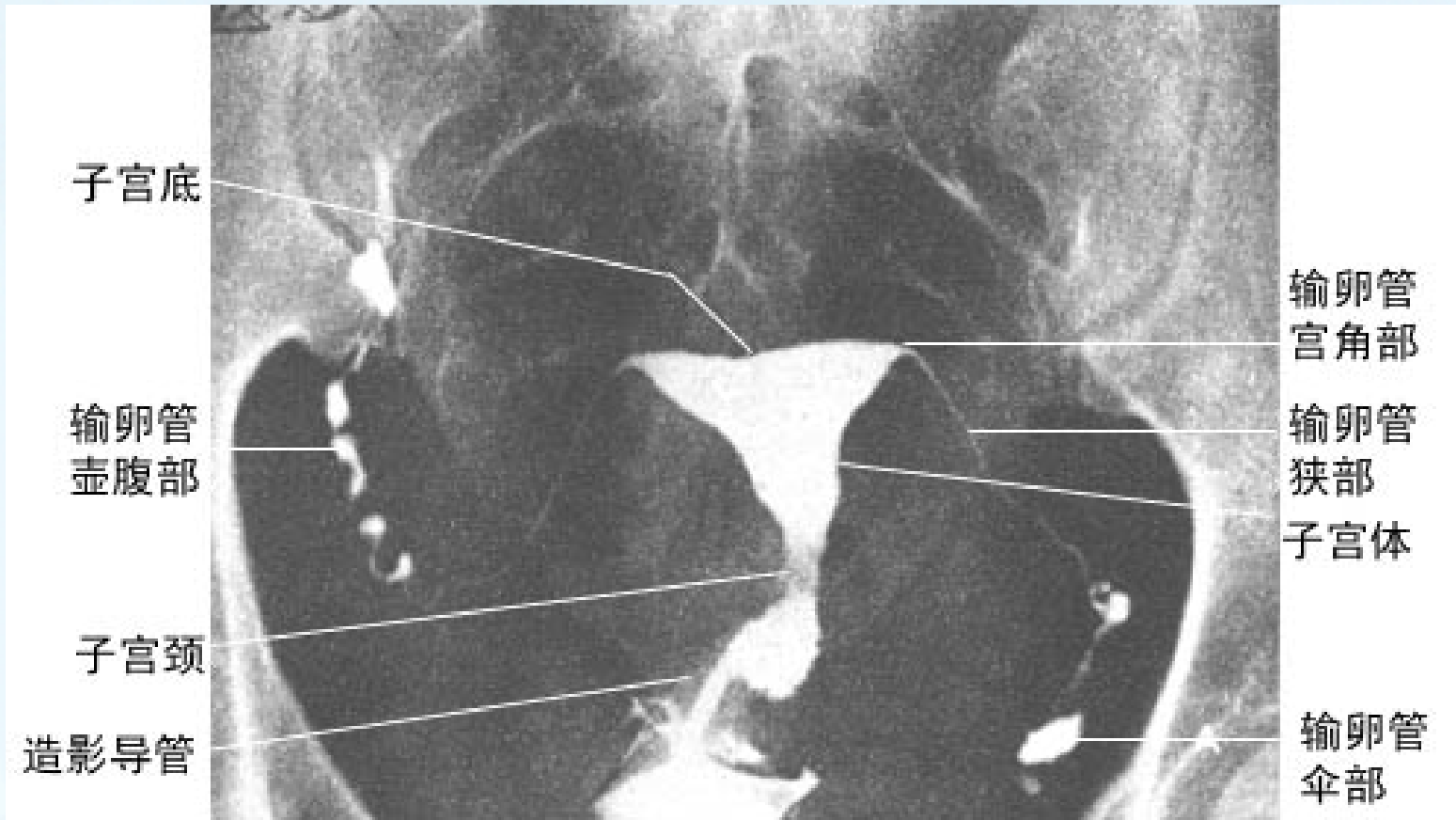
# 肘关节



正位（左图），侧位（右图）平片



# 子宫输卵管造影



# 足

左图为正位，右图为斜位。

